

RRP \$12.95

METALAND

KNOW YOUR STEEL

Steel Mass Reference
& Product Catalogue



NO DRAMAS

www.metaland.com.au or call 1300 638 252

Foreword

This publication has been prepared by Metaland which is an operating business of OneSteel Distribution, OneSteel Trading Pty Limited ABN 50 007 519 646.

The aim of this booklet is to provide customers with useful information regarding steel and accessory products. Every effort has been made to ensure that the information contained in this publication is accurate. However, it should be noted that the company cannot accept responsibility for errors or omissions, or for changes which have taken place since the printing of this edition. Unless required by law, the company cannot accept any responsibility for any loss, damage or consequence resulting from the use of this publication. The preferred range of sizes only has been covered, some of these sizes may be subject to minimum order quantities, and every care should be taken to establish availability before proceeding based on the specifications provided. Additional information concerning non-preferred sizes, range of specifications available, or related data not included in this booklet is available on request through Metaland Branches.

Note: Mass Calculations have been based on a mass for carbon steel of 7,850 kg/m³ rounded off and includes a 2.5 per cent rolling tolerance where applicable.

Trademarks

- OneSteel Australian Tube Mills Pty Ltd - DuraGal, SupaGal, GAL140, OZTUBE, OZRAIL
- OneSteel Manufacturing Pty Ltd - 300PLUS
- OneSteel Trading Pty Ltd - DuraGal Flooring System, DuraGal Mezzanine Flooring System, DuraGal Carport, Tubecolor
- OneSteel Reinforcing Pty Ltd - HANDIMESH, ONEMESH, POOLSTEEL, 500PLUS, UTEMESH
- LiteSteel Products Pty Ltd - LiteSteel Beam, LiteSteel Technologies, LSB, DuoSteel
- BlueScope Steel Limited - Xlerplate, Xlerplate Lite, Brightform, Blackform, Galvabond, Galvaskin, Zincoan, Zincoan, Zincoan, Colorbond, LY-TEN, Lysaght, Longline 305, Multiclad, Easyclad, Quad 115 Hi Front, Trimline, Sheerline, Emline, Half Round, Ranceline, Colonial, Novaline, Bondek, W-Dek, Neetascreen, Smartascreen, Miniscreen, Customscreen, Flatdek, Flatdek II, Firmlok, Headland, Manor Red, Jasper, Sandbank, Classic Cream, Surfist, Paperbark, Dune, Shale Grey, Windspray, Woodland Grey, Bushland, Pale Eucalypt, Wilderness, Cottage Green, Plantation, Blue Ridge, Deep Ocean, Night Sky
- Bisalloy Steels Pty Ltd - Bisplate
- Stramit Corporation Pty Ltd - Speed Deck Ultra, Corrugated, Monoclad, Megaclad, Longspan, Capacity Plus, Minirib, Mini Corry
- Magswitch Worldwide Pty Ltd - Magswitch
- Lincoln Global Inc - Easymig, Easyarc, Powercraft
- Makita Corporation - Makita, Maktec
- Illinois Tool Works Inc - Galmet, Buildex, Teks, Shed Teks, Ripple Teks, AutoTeks, SuperTEKS, RoofZips, Hi-Teks, BattenZips, PolyZips, Pryda

Sources of Information

- OneSteel Market Mills - Pricing and Availability Guide - Hot Rolled and Welded Structural Steel - Effective February 2010
- OneSteel Market Mills - Pricing and Availability Guide - Merchant Bar - Effective February 2010
- OneSteel Australian Tube Mills - Pricing and Availability Guide - Pipe and Tube Structural Products - Effective February 2010
- OneSteel Australian Tube Mills - Pricing and Availability Guide - DuraGal Profiles - Effective December 2009
- OneSteel BTM Handbook - Issue 2
- OneSteel Reinforcing National Product and Services Catalogue - 2009/2010
- BlueScope Steel Hot Rolled Price Schedule - Effective 11 December 2009
- BlueScope Steel Xlerplate Price Schedule - Effective 11 December 2009
- BlueScope Steel Xlerplate Lite Schedule - Effective 11 December 2009
- BlueScope Steel - Aluminium Catalogue 1st Edition
- BlueScope Steel - Steel Guide
- Nationwide Stainless Weights - 2009

Glossary of Terms

To assist you in understanding the terminology used throughout this catalogue and other useful industry terms, Metaland have provided a complete Glossary of Terms for download at: www.metaland.com.au

Terms & Conditions of Sale

A full copy of Metaland Terms & Conditions of Sale is located at: www.metaland.com.au

Dear Metaland Customer,

There's more in store at Metaland! We stock all your steel requirements to save you time and money on your next project. ... and we're always here to lend a hand. **No Dramas!**

Here's how we do it...

- With our network of stores across the land
- Our wide range of steel products, fittings and accessories
- Everything you need to weld, cut, grind, touch-up, seal and fasten
- Process your steel such as cut-to-size, bending, folding, drilling, galvanizing or powder coating

And If we don't have it in stock we can order it in. **No Dramas!**

And let's not forget...

- Our helpful friendly service and advice that's second to none
- Additional technical information from our quality suppliers
- Delivery to your door... We can arrange that too. **No Dramas!**

"**Service with Solutions**" is our promise to our customers.

Call 1300 METALAND (1300 638 252)
or visit www.metaland.com.au

NO DRAMAS

Visit our Stores

Our nationwide network of stores are conveniently located near you. Simply check the back page of this catalogue or visit www.metaland.com.au

Metaland is open to the public Monday-Friday from 8pm-4pm to midday Saturday at most locations. Check out the opening hours, address and contact details of your nearest Metaland outlet from our website listed in your state.

www.metaland.com.au

You can find all your steel products, accessories and advice here too!

If you're looking for a steel project to work on, look for our **"How To"** brochures on our website or alternatively drop in to the store for one.

Topics range from **Choose the right pipe** to **Make yourself a Gate**, **Cattle Yards** and more.

Customer Feedback

At Metaland we appreciate your business and welcome your feedback. We're always looking for better ways to help understand your business in order to save you time, money and effort on your next project.

Visit our **Customer Feedback Form** located at www.metaland.com.au/feedback
or email us direct on info@metaland.com.au
or call **1300 METALAND (1300 638 252)**

Our Valued Suppliers

Metaland stock quality products and brands from the suppliers you know and trust.



Contents

Structural		Stainless Steel	
Equal Angles	7	Angles	59
Unequal Angles	7	Flat Bar	59
Universal Beams	8	Round Bar	60
Welded Beams	8	Austenitic Sheet & Coil	60
Taper Flange Beams	9	Ferritic Sheet & Coil	61
Universal Columns	9	Building Products	
Welded Columns	9	LiteSteel® Beam	61
Parallel Flange Channels	10	DuraGal® Carport	63
Rails	10	DuraGal Flooring System®	64
Hot Rolled Standard Bundle Configurations	10	DuraGal Mezzanine Flooring System®	65
Bar Sections		Sliding Door Systems	66
Equal Angles	12	Purlins	67
Unequal Angles	12	Lintels	67
Flat Bar	13	Roofing, Walling & Rainwater	69
Round Bar	15	Structural Decking	73
Square Bar	16	Fencing	74
Parallel Flange Channels	16	Home Improvements	74
Billets	16	Walkway Systems	75
DuraGal® Angles	17	Balustrading	76
DuraGal® Channels	17	Reinforcing Bar & Mesh	
DuraGal® Flats	18	General Purpose Mesh	77
Tubular		Handimesh®	77
Square Hollow Sections	19	Utemesh®	77
Rectangular Hollow Sections	21	Deformed Bar	78
OZTUBE™	23	Reinforcing Mesh	78
OZRAIL™	24	Trench Mesh	78
Silo Sections	24	Fencing & Fittings	
Pipe – Painted, Galvanized	25	Fabricated Fencing	79
DuraGal® CHS – Extra Light	27	Wires	79
SupaGal® CHS – Extra Light	27	Tiewire	80
Large Structural CHS	28	Posts & Post Caps	80
Precision Tube	29	Brackets, Clips & Flanges	80
TubeColour®	33	Universal Fence Fitting System	81
Telescoping SHS, RHS, CHS	34-36	Hinges, Gudgeons & Clamps	81
SHS & RHS – End Colour Code	37	Farm Gate Packs	81
Pipe – End Colour Code	37	Gates	81
Plate		Welding	
Grade 250, 350, K1042	38	Magsquare & Boomer Angles	82
Boiler	40	Welding Clamps & Mag Hooks	82
Pressure Vessel	40	Portable Welders	83
Floor	41	Safety Apparel	83
Coil	41	Electrodes & Wires	84
Coil Floor	41	Gloves	84
Quench & Tempered	42	Power Tools	
International Standards Comparison	43	Drills, Grinders & Drop Saws	85
Sheet & Coil		Cutting & Grinding Discs	86
Hot Rolled: Formable HA1S Steel	44	Safety	
Hot Rolled: Formable Brightform® Steel	44	Dust Masks & Ear Plugs	87
Hot Rolled: Pickled HA3-P LY-TEN® Steel	45	Face Shields, Goggles & Glasses	87
Hot Rolled: Cold Rolled CA3SN-G® Steel	45	Paints	
Sheet Weight Quick Reference	45	Paints & Primers	88
Galvabond® G2 Z275	46	Fasteners	
Galvaskin® G2 Z200	46	Teks, Zips & Battens	89
Zincaneal® G2S ZF100	46	General Information	
Zincalume® G300 ZF100	48	Geometry & Mensuration	90
Colorbond® CG300 AZF150	48	Gauge Conversions	90
Aluminium		Conversion Tables	91
Architectural Alloy		Imperial to Metric Conversion Table	92
– Angles, Channels, Flat Bar, Round Bar	49	Relevant Australian Standards	94
Structural Alloy		Handy Tips	94
– Angles, Channels, Flat Bar, Round Bar	52		
Aluminium Hollow & Tubes	53		
Aluminium Sheet & Plate	56		



Equal Angles – Various Standard Lengths



Note: Meets Joint Australian/
New Zealand Standard
AS/NZS 3679

Size mm x mm	Mass kg/m	Metres per Tonne
125 x 125 x 8	14.9	67
x 10	18.0	56
x 12	22.5	44
x 16	29.1	34
150 x 150 x 10	21.9	46
x 12	27.3	37
x 16	35.4	28
x 19	42.1	24
200 x 200 x 13	40.0	25
x 16	48.7	21
x 18	54.4	18
x 20	60.1	17
x 26	76.8	13

Typical uses:

- Engineering Construction
- Residential Construction
- Non-Residential Construction
- Mining Infrastructure
- Transport and Storage
- Manufacturing

Features:

- Exceeds Australian Standard AS3679.1 Grade 300
- Up to 20% stronger for improved strength to weight ratios
- Requires no special pre-heating for welding

Unequal Angles – Various Standard Lengths



Size mm x mm	Mass kg/m	Metres per Tonne
150 x 90 x 8	14.3	70
x 10	17.3	58
x 12	21.6	46
x 16	27.9	36
150 x 100 x 10	18.0	56
x 12	22.5	44

Typical uses:

- Engineering Construction
- Residential Construction
- Non-Residential Construction
- Mining Infrastructure
- Transport and Storage
- Manufacturing

Features:

- Exceeds Australian Standard AS3679.1 Grade 300
- Up to 20% stronger for improved strength to weight ratios
- Requires no special pre-heating for welding



Everything you need in steel when you need it!

Throughout our national network of stores, Metaland stocks and supplies tubular pipe and RHS, flats, rounds, angles, reobar, lintels and all the steel accessories products you require. **No Dramas!**

Call into your nearest branch or visit www.metaland.com.au

Universal Beams – Various Standard Lengths



Typical uses:

- Engineering Construction
- Residential Construction
- Non-Residential Construction
- Mining Infrastructure
- Transport and Storage
- Manufacturing

Features:

- Exceeds Australian Standard AS3679.1 Grade 300
- Up to 20% stronger for improved strength to weight ratios
- Requires no special pre-heating for welding

Note: Meets Joint Australian/ New Zealand Standard AS/NZS 3679

Metric Designation	Size mm x mm	Mass kg/m	Metres per Tonne
150 UB	150 x 75	14.0	71
	155 x 75	18.0	56
180 UB	173 x 90	16.1	62
	175 x 90	18.1	55
	179 x 90	22.2	45
200 UB	198 x 99	18.2	55
	202 x 133	22.3	45
	203 x 133	25.4	39
	207 x 134	29.8	34
250 UB	248 x 124	25.7	39
	252 x 146	31.4	32
	256 x 146	37.3	27
310 UB	298 x 149	32.0	31
	304 x 165	40.4	25
	307 x 166	46.2	22
360 UB	352 x 171	44.7	22
	356 x 171	50.7	20
	359 x 172	56.7	18
410 UB	403 x 178	53.7	19
	406 x 178	59.7	17
460 UB	454 x 190	67.1	15
	457 x 190	74.6	13
	460 x 191	82.1	12
530 UB	533 x 209	82.0	12
	533 x 209	92.4	11
610 UB	602 x 228	101	10
	356 x 228	113	9
	612 x 229	125	8

Welded Beams – Various Standard Lengths



Typical uses:

- Engineering Construction
- Residential Construction
- Non-Residential Construction
- Mining Infrastructure
- Transport and Storage
- Manufacturing

Features:

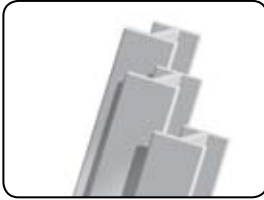
- Exceeds Australian Standard AS3679.1 Grade 300
- Up to 20% stronger for better strength to weight ratios
- Requires no special pre-heating for welding

Metric Designation	Size mm x mm	Mass kg/m	Metres per Tonne
700 WB	692 x 250	115	8.70
	700 x 250	130	7.69
	710 x 250	150	6.67
	716 x 275	173	5.78
800 WB	792 x 250	122	8.20
	800 x 275	146	6.85
	810 x 275	168	5.95
	816 x 300	192	5.21
900 WB	900 x 300	175	5.71
	910 x 350	218	4.59
	916 x 400	257	3.89
	924 x 400	282	3.55
1000 WB	1000 x 300	215	4.65
	1010 x 350	258	3.88
	1016 x 400	296	3.38
	1024 x 400	322	3.11
1200 WB	1170 x 275	249	4.02
	1170 x 350	278	3.60
	1176 x 400	317	3.15
	1184 x 400	342	2.92
	1184 x 500	392	2.55
	1192 x 500	423	2.36
	1200 x 500	455	2.20

Notes: Meets Joint Australian/ New Zealand Standard AS/NZS 3679. Made to order. Lead times may apply.



Taper Flange Beams – Various Standard Lengths



Size mm x mm	Mass kg/m	Metres per Tonne
100 x 45	7.20	139
125 x 65	13.1	76

Typical uses:

- Engineering Construction
- Residential Construction
- Non-Residential Construction
- Mining Infrastructure
- Transport and Storage
- Manufacturing

Universal Columns – Various Standard Lengths



Metric Designation	Size mm x mm	Mass kg/m	Metres per Tonne
100 UC	97 x 99	14.8	68
150 UC	152 x 152	23.4	43
	158 x 153	30.0	33
	162 x 154	37.2	27
200 UC	203 x 203	46.2	22
	206 x 204	52.2	19
	210 x 205	59.5	17
250 UC	254 x 254	72.9	14
	260 x 256	89.5	11
310 UC	308 x 305	96.8	10
	315 x 307	118	8
	321 x 309	137	7
	327 x 311	158	6

Typical uses:

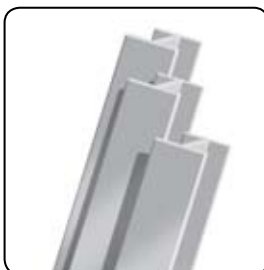
- Engineering Construction
- Residential Construction
- Non-Residential Construction
- Mining Infrastructure
- Transport and Storage
- Manufacturing

Features:

- Exceeds Australian Standard AS3679.1 Grade 300
- Up to 20% stronger for better strength to weight ratios
- Requires no special pre-heating for welding

Notes: Meets Joint Australian/ New Zealand Standard AS/NZS 3679

Welded Columns – Various Standard Lengths



Metric Designation	Size mm x mm	Mass kg/m	Metres per Tonne
500 WC	490 x 500	228	4.39
	500 x 500	267	3.75
	506 x 500	290	3.45
	514 x 500	340	2.94
	472 x 500	383	2.61
	480 x 500	414	2.42
	480 x 500	440	2.27

Note: Made to order. Lead times may apply.



Parallel Flange Channels – Various Standard Lengths



Size mm x mm	Mass kg/m	Metres per Tonne
150 x 75	17.7	56.5
180 x 75	20.9	47.9
200 x 75	22.9	43.7
230 x 75	25.1	39.8
250 x 90	35.5	28.2
300 x 90	40.1	24.9
380 x 100	55.2	18.1

Note: Meets Joint Australian / New Zealand Standard AS/NZS 3679

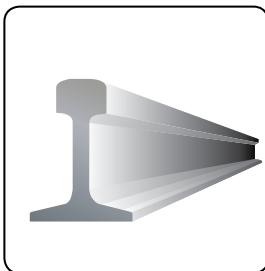
Typical uses:

- Engineering Construction
- Residential & Non-Residential Construction
- Mining Infrastructure
- Transport and Storage
- Manufacturing

Features:

- Exceeds Australian Standard AS3679.1 Grade 300
- Up to 20% stronger for improved strength to weight ratios
- Requires no special pre-heating for welding

Rails



Section	Mass kg/m	Metres per Tonne
10	10.10	99.00
15	15.20	65.79
22	22.30	44.84
30	30.10	33.22
41	40.80	24.51
50	50.60	19.76
53	53.00	18.87
60	60.60	16.50
68	67.50	14.81
73	73.63	13.58
86	85.50	11.70

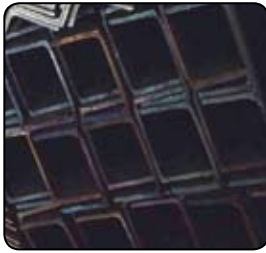
Note: Rails are not normally a stocked item - Lead times may apply.

Hot Rolled Structural Standard Bundle Configuration – Angles



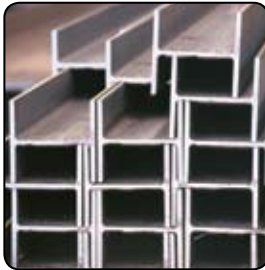
Size mm	Mass kg/m	6.0-9.0 m	9.1-10.5 m	10.6-12.0 m	12.1-13.5 m	13.6-15.0 m
125 x 125 x 8	14.9	36	30	26	21	21
125 x 125 x 10	18.0	30	25	22	18	18
125 x 125 x 12	22.5	24	20	18	14	14
125 x 125 x 16	29.1	19	16	14	11	11
150 x 90 x 8	14.3	36	30	27	21	21
150 x 90 x 10	17.3	32	27	24	19	19
150 x 90 x 12	21.6	24	21	18	15	15
150 x 90 x 16	27.9	19	16	14	11	11
150 x 100 x 10	18.0	30	25	22	18	18
150 x 100 x 12	22.5	24	20	18	14	14
150 x 150 x 10	21.9	25	21	18	15	15
150 x 150 x 12	27.3	20	16	15	12	12
150 x 150 x 16	35.4	15	13	11	9	9
150 x 150 x 19	42.1	13	11	9	7	7
200 x 200 x 13	40.0	13	11	10	8	8
200 x 200 x 16	48.7	11	9	8	6	6
200 x 200 x 18	54.4	10	8	7	6	6
200 x 200 x 20	60.1	9	7	6	5	5
200 x 200 x 26	76.8	7	6	5	4	4

Hot Rolled Structural Standard Bundle Configuration – Channels



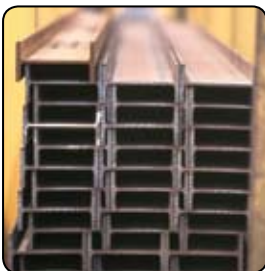
Size	Mass kg/m	6.0-9.0 m	9.1-10.5 m	10.6-12.0 m	12.1-13.5 m	13.6-15.0 m	15.1-16.5 m	16.6-18.0 m
150 PFC	17.7	30	24	20	20	16	16	12
180 PFC	20.9	24	20	16	16	12	12	12
200 PFC	22.9	24	20	16	16	12	12	12
230 PFC	25.1	20	16	16	12	12	12	10
250 PFC	35.5	12	12	8	8	8	8	8
300 PFC	40.1	12	8	8	8	8	6	6
380 PFC	55.2	10	8	6	6	6	4	4

Hot Rolled Structural Standard Bundle Configuration – Universal Beams



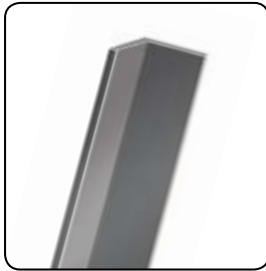
Size	Mass kg/m	6.0-9.0 m	9.1-10.5 m	10.6-12.0 m	12.1-13.5 m	13.6-15.0 m	15.1-16.5 m	16.6-18.0 m	20.0 m
150 UB	14.0	36	30	24	24	20	20	16	
	18.0	30	24	20	18	16	16	14	
180 UB	16.1	30	24	20	18	16	16	14	
	18.1	30	24	20	18	16	16	14	
200 UB	22.2	24	20	16	16	14	12	12	
	18.2	30	24	22	18	18	16	14	
	22.3	18	18	18	16	14	12	12	
	25.4	18	18	16	14	12	10	10	
250 UB	29.8	18	16	12	12	10	10	8	
	25.7	20	18	16	14	12	10	10	
	31.4	16	14	12	10	10	8	8	
310 UB	37.3	14	12	10	8	8	8	7	
	32.0	16	14	12	10	10	8	8	
	40.4	12	10	10	8	8	6	6	6
360 UB	46.2	12	10	8	8	7	6	6	5
	44.7	12	10	7	7	7	6	6	5
	50.7	10	7	7	7	6	5	5	4
410 UB	56.7	7	7	7	6	5	5	4	4
	53.7	10	7	6	6	6	5	5	4
460 UB	59.7	7	7	6	6	5	5	4	4
	67.1	6	6	6	5	4	4	4	3
	74.6	6	6	5	4	4	4	3	3
530 UB	82.1	6	5	5	4	4	3	3	3
	82.0	5	5	5	4	4	3	3	3
610 UB	92.4	5	5	4	4	3	3	3	1
	101	4	4	3	3	3	3	1	1
	103	4	4	3	3	1	1	1	1
	125	4	3	3	1	1	1	1	1

Hot Rolled Structural Standard Bundle Configuration – Universal Columns



Size	Mass kg/m	6.0-9.0 m	9.1-10.5 m	10.6-12.0 m	12.1-13.5 m	13.6-15.0 m	15.1-16.5 m	16.6-18.0 m	20.0 m
100 UC	14.8	36	28	24	24	21	18	16	
150 UC	23.4	21	18	15	15	12	12	10	
	30.0	18	15	12	12	10	10	8	
200 UC	37.2	12	12	10	8	8	8	6	
	46.2	12	10	8	8	6	6	6	
	52.2	10	8	6	6	6	5	5	
250 UC	59.5	8	8	6	6	5	5	4	
	72.9	6	6	4	4	4	4	3	3
310 UC	89.5	6	4	4	4	3	3	3	2
	96.8	3	3	3	3	3	3	2	2
	118	3	3	3	3	2	2	2	
	137	3	3	3	2	2	2	2	
	158	3	2	2	2	2	1	1	

Equal Angles – Various Standard Lengths



Typical uses:

- Engineering Construction
- Residential Construction
- Non-Residential Construction
- Mining Infrastructure
- Transport and Storage
- Manufacturing

Features:

- Exceeds Australian Standard AS3679.1 Grade 300
- Up to 20% stronger for improved strength to weight ratios
- Requires no special pre-heating for welding

Note: Meets Joint Australian/
New Zealand Standard
AS/NZS 3679

Size mm x mm	Mass kg/m	Metres per Tonne	
25 x 25 x 3	1.12	893	
	x 5	1.65	606
	x 6	2.08	481
30 x 30 x 3	1.35	741	
	x 5	2.01	498
	x 6	2.56	391
40 x 40 x 3	1.83	546	
	x 5	2.73	366
	x 6	3.50	286
50 x 50 x 3	2.31	433	
	x 5	3.48	287
	x 6	4.46	224
55 x 55 x 5	x 8	5.68	176
	x 5	3.84	260
	x 6	4.93	203
65 x 65 x 5	x 6	4.56	219
	x 8	5.87	170
	x 10	7.51	133
75 x 75 x 5	x 8	9.02	111
	x 5	5.27	190
	x 6	6.81	147
75 x 75 x 6	x 8	8.73	115
	x 10	10.5	95
	x 12	12.7	79
90 x 90 x 6	x 6	8.22	122
	x 8	10.6	94
	x 10	12.7	79
100 x 100 x 6	x 6	9.16	109
	x 8	11.8	85
	x 10	14.2	70
x 12	17.7	57	

Unequal Angles – Various Standard Lengths



Size mm x mm	Mass kg/m	Metres per Tonne	
65 x 50 x 5	4.02	249	
	x 6	5.16	194
	x 8	6.59	152
75 x 50 x 5	4.40	227	
	x 6	5.64	177
	x 8	7.21	139
100 x 75 x 6	7.98	125	
	x 8	10.3	97
	x 10	12.4	81
125 x 75 x 6	9.16	109	
	x 8	11.8	85
	x 10	14.2	70
x 12	17.7	57	

Typical uses:

- Engineering Construction
- Residential Construction
- Non-Residential Construction
- Mining Infrastructure
- Transport and Storage
- Manufacturing

Features:

- Exceeds Australian Standard AS3679.1 Grade 300
- Up to 20% stronger for improved strength to weight ratios
- Requires no special pre-heating for welding

Flat Bar - Square Edge – 6m



Typical uses:

- Engineering Construction
- Residential Construction
- Non-Residential Construction
- Mining Infrastructure
- Transport and Storage
- Manufacturing

Features:

- Exceeds Australian Standard AS3679.1 Grade 300
- Up to 20% stronger for improved strength to weight ratios
- Requires no special pre-heating for welding

Size mm x mm	Mass kg/m	Metres per Tonne
20 x 3	0.48	2070
x 5	0.81	1242
x 6	0.97	1035
x 10	1.61	622
25 x 3	0.60	1658
x 5	1.01	994
x 6	1.21	829
x 8	1.61	622
x 10	2.01	497
x 12	2.41	414
32 x 3	0.77	1295
x 5	1.29	777
x 6	1.55	647
x 8	2.06	485
x 10	2.58	388
x 12	3.09	324
40 x 3	0.97	1035
x 5	1.61	622
x 6	1.93	518
x 8	2.58	388
x 10	3.22	311
x 12	3.86	259
x 16	5.15	194
x 20	6.44	159
50 x 3	1.21	829
x 5	2.01	497
x 6	2.41	414
x 8	3.22	311
x 10	4.02	249
x 12	4.83	207
x 16	6.44	155
x 20	8.05	124
x 25	10.1	99.4
65 x 3	1.57	637
x 5	2.62	382
x 6	3.14	319
x 8	4.18	239
x 10	5.23	191
x 12	6.28	159
x 16	8.37	120
x 20	10.5	95.6
x 25	13.1	76.5
75 x 5	3.02	331
x 6	3.62	276
x 8	4.83	207
x 10	6.04	166
x 12	7.24	138
x 16	9.66	104
x 20	12.1	82.9
x 25	15.1	66.3
x 40	24.1	41.4
90 x 5	3.62	283
x 6	4.35	230
x 8	5.79	173
x 10	7.24	138
x 12	8.69	115

Note: Meets Joint Australian/
New Zealand Standard
AS/NZS 3679

Flat Bar - Square Edge – 6m



Typical uses:

- Engineering Construction
- Residential Construction
- Non-Residential Construction
- Mining Infrastructure
- Transport and Storage
- Manufacturing

Features:

- Exceeds Australian Standard AS3679.1 Grade 300
- Up to 20% stronger for improved strength to weight ratios
- Requires no special pre-heating for welding

Size mm x mm	Mass kg/m	Metres per Tonne
100 x 5	4.02	249
x 6	4.83	207
x 8	6.44	155
x 10	8.05	124
x 12	9.66	104
x 16	12.9	77.7
x 20	16.1	62.1
x 25	20.1	49.7
x 50	40.2	24.9
110 x 6	5.31	188
x 8	7.08	141
x 10	8.85	113
x 12	10.6	94.2
130 x 5	5.23	191
x 6	6.28	159
x 8	8.37	120
x 10	10.5	95.6
x 12	12.6	79.7
x 16	16.7	59.8
x 20	20.9	47.8
x 25	26.2	38.2
150 x 5	6.04	166
x 6	7.24	138
x 8	9.66	104
x 10	12.1	82.9
x 12	14.5	69.1
x 16	19.3	51.8
x 20	24.1	41.4
x 25	30.1	33.1
x 50	60.4	16.6
180 x 5	7.24	138
x 6	8.69	115
x 10	14.5	69.1
x 12	17.4	57.5
x 16	23.2	43.2
x 20	29.0	34.5
x 25	36.2	27.6
200 x 6	9.66	104
x 8	12.9	77.7
x 10	16.1	62.1
x 12	19.3	51.8
x 16	25.7	38.8
x 20	32.2	31.1
x 25	40.3	24.9
250 x 6	12.1	82.9
x 8	16.1	62.2
x 10	20.1	49.7
x 12	24.1	41.4
x 16	32.2	31.1
x 20	40.2	24.9
x 25	50.3	19.9
300 x 6	14.5	69.1
x 8	19.3	51.8
x 10	24.1	41.4
x 12	29.0	34.5
x 16	38.6	25.9
x 20	48.3	20.7
x 25	60.4	16.6

Note: Meets Joint Australian/
New Zealand Standard
AS/NZS 3679

Flat Bar - Round Edge – 4m



Size mm x mm	Mass kg/m	Metres per Tonne	
10 x 3	0.24	4132	
13 x 3	0.31	3185	
	x 5	0.52	1912
	x 6	0.63	1592
16 x 3	0.39	2590	
	x 5	0.64	1552
	x 8	1.03	971

Typical uses:

- Engineering Construction
- Residential Construction
- Non-Residential Construction
- Mining Infrastructure
- Transport and Storage
- Manufacturing

Features:

- Requires no special pre-heating for welding

Note: Meets Joint Australian/
New Zealand Standard
AS/NZS 3679



Round Bar – 6m



Diameter mm	Mass kg/m	Metres per Tonne
10	0.64	1563
12	0.92	1087
14	1.24	806
16	1.62	617
18	2.05	488
20	2.53	395
22	3.06	327
24	3.65	274
27	4.61	217
30	5.69	176
33	6.89	145
36	8.20	122
39	9.62	104
42	11.15	90
45	12.80	78
48	14.57	69
50	15.80	63
56	19.8	50
60	22.8	44
65	26.7	37
75	35.6	28
80	40.5	24
90	51.2	20
100	63.2	16
110	76.5	13
120	91.0	11
130	107	9.4
140	124	8.1
150	142	7.0
160	162	6.2
170	182	5.5
180	205	4.9
190	229	4.4
200	253	4.0

Typical uses:

- Engineering Construction
- Residential Construction
- Non-Residential Construction
- Mining Infrastructure
- Transport and Storage
- Manufacturing

Features:

- Exceeds Australian Standard AS3679.1 Grade 300
- Up to 20% stronger for improved strength to weight ratios
- Requires no special pre-heating for welding

Note: Meets Joint Australian /
New Zealand Standard
AS/NZS 3679



Square Bar – 6m



Size mm x mm	Mass kg/m	Metres per Tonne
10 x 10	0.81	1235
12 x 12	1.16	862
16 x 16	2.06	485
20 x 20	3.22	311
25 x 25	5.03	219
32 x 32	8.24	121
40 x 40	12.8	78

Note: Meets Joint Australian / New Zealand Standard AS/NZS 3679

Typical uses:

- Engineering Construction
- Residential & Non-Residential Construction
- Mining Infrastructure
- Transport and Storage
- Manufacturing

Features:

- Exceeds Australian Standard AS3679.1 Grade 300
- Up to 20% stronger for improved strength to weight ratios
- Requires no special pre-heating for welding

Parallel Flange Channels – Various Standard Lengths



Size mm x mm	Mass kg/m	Metres per Tonne
75 x 40	5.92	169
100 x 50	8.33	120
125 x 65	11.9	84.0

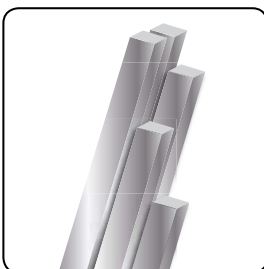
Typical uses:

- Engineering Construction
- Residential & Non-Residential Construction
- Mining Infrastructure
- Transport and Storage
- Manufacturing

Features:

- Exceeds Australian Standard AS3679.1 Grade 300
- Up to 20% stronger for improved strength to weight ratios
- Requires no special pre-heating for welding

Billets – 6m



Size mm x mm	Mass kg/m	Metres per Tonne
45 x 45	16.30	61
50 x 50	27.80	36
63 x 63	31.20	32
75 x 75	45.27	22

Note: Meets Australian Standard AS 1442



DuraGal® Angles – Various Standard Lengths

DURAGAL®



Typical uses:

- Residential Construction
- Non-Residential Construction

Features:

- DuraGal hot-dip galvanized coating with a minimum zinc mass of 100g/m²
- Smooth quality finish
- Significantly lighter than traditional hot rolled sections
- Smooth surface allows easy powdercoating and painting

Note: Meets OneSteel Technical Specification TS100

Size mm	Nominal Thickness mm	Mass kg/m	Metres per Tonne	Length/Pack	
				Standard	
				6.0	9.0
30 x 30	2.5	1.06	947	80	
40 x 40	2.5	1.43	699	60	
	4.0	2.20	455	39	
45 x 45	2.5	1.62	617	54	
	4.0	2.50	400	36	
50 x 50	2.5	1.81	553	33	33
	4.0	2.80	357	27	27
	5.0	3.40	294		24
	6.0	4.21	238		21
65 x 65	4.0	3.69	271		22
	5.0	4.51	222		22
	6.0	5.62	178		18
75 x 75	4.0	4.29	233		22
	5.0	5.25	190		22
	6.0	6.56	152	18	
	8.0	8.59	116	18	
90 x 90	5.0	6.37	157	22	
	8.0	10.5	95.2	18	
100 x 100	6.0	8.92	112		16
	8.0	11.7	85.5		14
125 x 125	4.0	7.27	138		20
	5.0	8.95	112		18
	8.0	14.9	67.1		12
150 x 150	5.0	10.8	92.6		18
	8.0	18.0	55.6		12

DuraGal® Channels – Various Standard Lengths

DURAGAL®



Typical uses:

- Residential Construction
- Non-Residential Construction

Features:

- DuraGal hot-dip galvanized coating with a minimum zinc mass of 100g/m²
- Significantly lighter than traditional hot rolled sections
- Smooth surface allows easy powdercoating and painting

Size mm	Nominal Thickness mm	Mass kg/m	Metres per Tonne	Length/Pack	
				Standard	
				9.0	12.0
75 x 40	4.0	4.25	235	18	
100 x 50	4.0	5.59	179	18	
125 x 65	4.0	7.23	138	18	
150 x 75	5.0	10.5	95.1		12
180 x 75	5.0	11.6	86.2		12
200 x 75	5.0	12.4	80.7		12
	6.0	15.5	64.6		12
230 x 75	6.0	16.9	59.2		12
250 x 90	6.0	19.2	52.1		8
300 x 90	6.0	21.6	46.3		6
	8.0	28.5	35.1		6

Note: Meets OneSteel Technical Specification TS100

DuraGal® Flats – 6m



Typical uses:

- Residential Construction
- Non-Residential Construction

Features:

- DuraGal hot-dip galvanized coating with a minimum zinc mass of 100g/m²
- Smooth quality finish
- Significantly lighter than traditional hot rolled sections
- Smooth surface allows easy powdercoating and painting

Note: Meets OneSteel Technical Specification TS100

Size mm	Nominal Thickness mm	Mass kg/m	Metres per Tonne	Pack Size (Lns)
50	4	1.49	671	57
	5	1.84	543	45
65	4	1.94	515	44
	5	2.40	417	36
75	4	2.24	447	38
	5	2.77	361	32
100	4	2.98	336	28
	5	3.69	271	28
	6	4.71	212	26
	8	6.28	160	22
130	5	4.80	208	28
150	5	5.53	181	28
	6	7.07	142	24
	8	9.42	106	22
200	5	7.38	136	32
	6	9.42	106	28
	8	12.6	79.6	22
250	5	9.22	108	23
	8	15.7	63.7	16
300	5	11.1	90.1	19
	8	18.8	53.1	12



Fasteners and screws for every application...

Whether it's holding down a roof, putting up a wall or building a fence, Metaland's wide range of fasteners for timber and steel will fix you up. **No Dramas!**

Call into your nearest branch or visit www.metaland.com.au



Accessories to Cut, Weld, Grind, Paint...

Metaland has everything you need to finish that job off. From metal cutting saws to tape measures, welders, safety goggles, paints, primers and more. We've got it in store or we can order it in for you. **No Dramas!**

Call into your nearest branch or visit www.metaland.com.au



Square Hollow Sections – Various Standard Lengths

onesteel
australian tube mills



Surface Finishes

- C** - Clear
- P** - Painted
- S** - SupaGal®
- D** - DuraGal®
- L** - Lite Oil

Features:

- All tubular sections are available in DualGrade to meet AS/NZS 1163 C350 and C450, guaranteeing strength and elongation properties
- Available in many coating types including DuraGal, SupaGal, clear, painted and NOPC (No Oil or Paint Coating).
- DuraGal (external) and SupaGal (both sides) hot-dip galvanized coatings have a minimum zinc mass of 100g/m²

Typical uses:

- Engineering Construction
- Residential Construction
- Non-Residential Construction
- Mining Investment
- Transport and Storage
- Manufacturing
- Agriculture

Note: See page 21 for Rectangular Hollow Sections.

Size mm x mm x mm	Surface Finish	Mass kg/m	Metres per Tonne	Length/ Pack	
				Standard	
				6.5	8.0
20 x 20 x 1.6 x 2.0	PS,D	0.873	1150	96	
	P,S	1.05	953	96	
25 x 25 x 1.6 x 2.0 x 2.5 x 3.0	PS,D	1.12	890	100	
	PS,D	1.36	733	100	
	PS,D	1.64	610	100	
	PS,D	1.89	529	100	
30 x 30 x 1.6 x 2.0 x 2.5 x 3.0	PS,D	1.38	727		100
	PS,D	1.68	596		100
	P,S	2.03	492		100
	P,S	2.36	423		64
35 x 35 x 1.6 x 2.0 x 2.5 x 3.0	PS,D	1.63	615		100
	PS,D	1.99	502		100
	PS,D	2.42	412		64
	PS,D	2.83	353		64
40 x 40 x 1.6 x 2.0 x 2.5 x 3.0 x 4.0	PS,D	1.88	533		81
	PS,D	2.31	434		81
	PS,D	2.82	355		64
	PS,D	3.30	303		64
	PS,D	4.09	244		49
50 x 50 x 1.6 x 2.0 x 2.5 x 3.0 x 4.0 x 5.0 x 6.0	PS,D	2.38	420		64
	PS,D	2.93	300		64
	PS,D	3.60	278		49
	PS,D	4.25	236		49
	PS,D	5.35	187		36
	PS,D	6.39	156		30
	L	7.32	137		25
65 x 65 x 1.6 x 2.0 x 2.5 x 3.0 x 4.0 x 5.0 x 6.0	PS,D	3.13	319		49
	PS,D	3.88	258		42
	PS,D	4.78	209		42
	PS,D	5.66	177		36
	PS,D	7.23	138		30
	PS,D	8.75	114		25
	P,D	10.1	98.6		20
75 x 75 x 2.0 x 2.5 x 3.0 x 3.5 x 4.0 x 5.0 x 6.0	PS,D	4.50	222		36
	PS,D	5.56	180		30
	PS,D	6.60	152		30
	PS,D	7.53	133		25
	PS,D	8.49	118		25
	PS,D	10.3	96.9		20
	P,D	12.0	83.1		16
89 x 89 x 2.0 x 3.5 x 5.0 x 6.0	S	5.38	186		20
	PS,D	9.07	110		20
	PS,D	12.5	80.0		16
	P,D	14.7	68.3		12
90 x 90 x 2.0 x 2.5	P, GAL140	5.45	184		20
	P, GAL140	6.74	148		20



Square Hollow Sections – Various Standard Lengths



Surface Finishes

- C** - Clear
- P** - Painted
- S** - SupaGal®
- D** - DuraGal®
- L** - Lite Oil

Features:

- All tubular sections are available in DualGrade to meet AS/NZS 1163 C350 and C450, guaranteeing strength and elongation properties
- Available in many coating types including DuraGal, SupaGal, clear, painted and NOPC (No Oil or Paint Coating).
- DuraGal and SupaGal hot-dip galvanized coatings have a minimum zinc mass of 100g/m²

Typical uses:

- Engineering Construction
- Residential Construction
- Non-Residential Construction
- Mining Investment
- Transport and Storage
- Manufacturing
- Agriculture

Note: See page 21 for Rectangular Hollow Sections.

Size mm x mm x mm	Surface Finish	Mass kg/m	Metres per Tonne	Length/ Pack	
				Standard	
				8.0	12
100 x 100 x 2.0	P,D	6.07	165	20	20
	P,S,D	7.53	133	20	
	P,S,D	8.96	112	20	16
	P,S,D	11.6	86.0	16	12
	P,S,D	14.2	70.2	12	9
	P,D	16.7	59.7	12	9
	L	21.4	46.7	9	6
	P,L	23.5	42.5	9	6
	L	25.6	39.0		6
	125 x 125 x 4.0	C,P	14.8	67.7	12
C,P		18.2	55.0	12	9
C,P		21.4	46.6	9	6
L		27.7	36.1	6	4
C,P,L		30.6	32.7	8	4
L		33.4	29.9		4
150 x 150 x 5.0		C,P	22.1	45.3	9
	C,P	26.2	38.2	6	6
	L	33.9	29.5	6	4
	C,P,L	37.7	26.6	6	4
	L	41.3	24.2		2
	200 x 200 x 5.0	C,P	29.9	33.4	6
C,P		35.6	28.1	4	4
L		46.5	21.5	4	2
C,L		51.8	19.3	4	2
L		57.0	17.6		2
L		69.4	14.4		2
L		85.5	11.7		1
250 x 250 x 6.0		C,L	45.0	22.2	4
	L	59.1	16.9	4	2
	C,L	65.9	15.2	2	2
	L	72.7	13.8		2
	L	89.0	11.2		1
	L	111	9.04		1
	300 x 300 x 8.0	L	71.6	14.0	
L		88.4	11.3		1
L		109	9.21		1
L		136	7.36		1
300 x 300 x 10.0		L	84.2	11.9	
	L	104	9.61		1
	L	128	7.80		1
	L	161	6.21		1
	400 x 400 x 10.0	L	120	8.35	
L		148	6.76		1
L		186	5.38		1



Rectangular Hollow Sections – Various Standard Lengths

onesteel
australian tube mills



Surface Finishes

P - Painted

S - SupaGal®

D - DuraGal®

L - Lite Oil

Features:

- All tubular sections are available in DualGrade to meet AS/NZS 1163 C350 and C450, guaranteeing strength and elongation properties
- Available in many coating types including DuraGal, SupaGal, clear, painted and NOPC (No Oil or Paint Coating).
- DuraGal and SupaGal hot-dip galvanized coatings have a minimum zinc mass of 100g/m²

Typical uses:

- Engineering Construction
- Residential Construction
- Non-Residential Construction
- Mining Investment
- Transport and Storage
- Manufacturing
- Agriculture

Note: See page 19 for Square Hollow Sections.

Size mm x mm x mm	Surface Finish	Mass kg/m	Metres per Tonne	Length/ Pack		
				Standard		
				8.0	12	
50 x 20 x 1.6	P,D	1.63	615	96		
	x 2.0	P,D	1.99	502	96	
	x 2.5	P,D	2.42	412	72	
	x 3.0	P,D	2.83	353	72	
50 x 25 x 1.6	P,S,D	1.75	571	96		
	x 2.0	P,S,D	2.15	465	96	
	x 2.5	P,S,D	2.62	382	72	
	x 3.0	P,S,D	3.07	326	60	
65 x 35 x 2.0	P,S,D	2.93	341	54		
	x 2.5	P,S,D	3.60	278	54	
	x 3.0	P,S,D	4.25	236	45	
	x 4.0	P,D	5.35	187	45	
75 x 25 x 1.6	P,S,D	2.38	420	65		
	x 2.0	P,S,D	2.93	341	65	
	x 2.5	P,S,D	3.60	278	48	
75 x 50 x 1.6	P,S,D	3.01	332	54	54	
	x 2.0	P,S,D	3.72	269	42	42
	x 2.5	P,S,D	4.58	218	42	
	x 3.0	P,S,D	5.42	184	35	24
	x 4.0	P,S,D	6.92	145	28	24
	x 5.0	P,S,D	8.35	120	24	
76 x 38 x 2.5	P,D	9.67	103	20	16	
	x 3.0	P	4.15	241	45	
	x 4.0	P	4.90	204	40	
100 x 50 x 1.6	x 2.5	P	6.23	161	32	
	P,D	3.64	275	32	32	
	x 2.0	P,S,D	4.50	222	32	32
	x 2.5	P,S,D	5.56	180	32	24
	x 3.0	P,S,D	6.60	152	32	24
	x 3.5	P,S,D	7.53	133	24	18
	x 4.0	P,S,D	8.49	118	24	18
	x 5.0	P,S,D	10.3	96.9	18	15
x 6.0	P,D	12.0	83.1	15	12	
102 x 76 x 3.5	P	9.07	110	20		
	x 5.0	P	12.5	79.9	16	
	x 6.0	P	14.7	68.2	12	
125 x 75 x 2.0	P,D	6.07	165	24		
	x 2.5	P,S,D	7.53	133	24	20
	x 3.0	P,S,D	8.96	112	20	20
	x 4.0	P,S,D	11.6	86.0	15	15
	x 5.0	P,S,D	14.2	70.2	15	12
	x 6.0	P,D	16.7	59.7	12	6
127 x 51 x 3.5	P	9.07	110	21		
	x 5.0	P	12.5	79.9	18	
	x 6.0	P	14.7	68.2	14	



Rectangular Hollow Sections – Various Standard Lengths



Surface Finishes

- C** - Clear
- P** - Painted
- S** - SupaGal®
- D** - DuraGal®
- L** - Lite Oil

Features:

- All tubular sections are available in DualGrade to meet AS/NZS 1163 C350 and C450, guaranteeing strength and elongation properties
- Available in many coating types including DuraGal, SupaGal, clear, painted and NOPC (No Oil or Paint Coating).
- DuraGal and SupaGal hot-dip galvanized coatings have a minimum zinc mass of 100g/m²

Typical uses:

- Engineering Construction
- Residential Construction
- Non-Residential Construction
- Mining Investment
- Transport and Storage
- Manufacturing
- Agriculture

Note: See page 19 for Square Hollow Sections.

Size mm x mm x mm	Surface Finish	Mass kg/m	Metres per Tonne	Length/ Pack		
				Standard		
				8.0	12	
150 x 50 x 2.0	P,D	6.07	165	21	21	
	x 2.5	P,D	7.53	133	24	
	x 3.0	P,S,D	8.96	112	21	15
	x 4.0	P,S,D	11.6	86.0	15	15
	x 5.0	P,S,D	14.2	70.2	15	9
	x 6.0	C,P,D	16.7	59.7	15	9
150 x 100 x 4.0	P	14.8	67.7	12	9	
	x 5.0	P	18.2	55.0	12	8
	x 6.0	P	21.4	46.6	9	6
	x 8.0	P	27.7	36.1	6	4
	x 9.0	P	30.6	32.7	6	4
	x 10.0	P,L	33.4	29.9		4
152 x 76 x 5.0	P,L	16.4	60.7	12	12	
	x 6.0	P,L	19.4	51.5	9	9
200 x 100 x 4.0	P	17.9	55.8	8	6	
	x 5.0	P	22.1	45.3	8	6
	x 6.0	P	26.2	38.2	8	4
	x 8.0	P,L	33.9	29.5	6	4
	x 9.0	P	37.7	26.6	6	4
	x 10.0	P,L	41.3	24.2		2
250 x 150 x 5.0	C	29.9	33.4	6	4	
	x 6.0	C	35.6	28.1	4	4
	x 8.0	C,L	46.5	21.5	4	2
	x 9.0	C,L	51.8	19.3	4	2
	x 10.0	L	57.0	17.6		2
	x 12.5	L	69.4	14.4		2
300 x 200 x 6.0	L	45.0	22.2		2	
	x 8.0	C,P,L	59.1	16.9		2
	x 10.0	C,P,L	72.7	13.8		2
	x 12.5	L	89.0	11.2		1
	x 16.0	L	111	9.04		1
	350 x 250 x 6.0	L	54.4	18.4		2
x 8.0		L	71.6	14.0		2
x 10.0		L	88.4	11.3		1
x 12.5		L	109	9.21		1
x 16.0		L	136	7.36		1
400 x 200 x 8.0		L	71.6	14.0		2
	x 10.0	L	88.4	11.3		1
	x 12.5	L	109	9.21		1
	x 16.0	L	136	7.36		1
400 x 300 x 8.0	L	84.2	11.9		1	
	x 10.0	L	104	9.61		1
	x 12.5	L	128	7.80		1
	x 16.0	L	161	6.21		1



OZTUBE®

onesteel
australian tube mills



Features:

- Steel Quality: SHS & Rail to AS 1450 (steel chemistry only) /C350/ERW
- Galvanized Coating: PreGal to AS/NZS 4792 ZB100/100, ILG TO AS/NZS 4792 ILG100
- Pipe - XL & L to AS 1450/ C350/ERW
- Pipe - M to AS 1450/C250/ ERW



SHS – Painted & Galvanized				
Designation d x b mm	Wall Thickness mm	Mass kg/m	Metres per Tonne	Pack Size (Lns)
25 x 25	1.6	1.12	892	100
	2.0	1.36	735	100
30 x 30	1.6	1.38	724	100
	2.0	1.68	595	100
	2.5	2.03	492	100
40 x 40	1.6	1.88	531	81
	2.0	2.31	432	81
	2.5	2.82	354	64
	3.0	3.30	303	64
50 x 50	1.6	2.38	420	64
	2.0	2.93	341	64
	2.5	3.60	277	49
	3.0	4.25	235	49
65 x 65	1.6	3.13	319	49
	2.0	3.88	257	42
	2.5	4.78	209	42
	3.0	5.66	176	36
RHS – Painted & Galvanized				
50 x 25	1.6	1.75	571	96
	2.0	2.15	465	96
	2.5	2.62	381	72
	3.0	3.07	325	72
65 x 35	2.0	2.93	341	54
	2.5	3.60	277	54
	3.0	4.25	235	45
75 x 25	1.6	2.38	420	65
	2.0	2.93	341	65
	2.5	3.60	277	48
75 x 50	1.6	3.01	332	54
	2.0	3.72	268	42
	2.5	4.58	218	42
	3.0	5.42	184	35

Pipe - Painted		
Nominal Size DN	Mass kg/m	Pack Size (Lns)
20 XL	1.23	127
20 L	1.40	127
20 M	1.56	127
25 XL	1.56	91
25 L	1.99	91
25 M	2.41	91
32 L	2.55	61
32 M	3.10	61
40 L	3.25	61
40 M	3.57	61
50 XL	3.29	37
50 L	4.11	37
50 M	5.03	37
65 XL	4.19	37
65 M	6.43	37



OZRAIL™



SHS – Galvanized				
Designation d x b mm	Wall Thickness mm	Mass kg/m	Metres per Tonne	Pack Size (Lns)
40 x 40	1.6	1.88	814	81
	2.0	2.31	640	81
50 x 50	1.6	2.38	502	64
	2.0	2.93	502	64
75 x 75	4.0	8.49	383	25
100 x 100	4.0	11.6	304	16

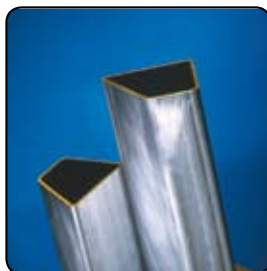
Features:

- Steel Quality: SHS & Rail to AS 1450 (steel chemistry only) /C350/ERW
- Galvanized Coating: PreGal to AS/NZS 4792 ZB100/100, ILG TO AS/NZS 4792 ILG100



Rail – Painted, Galvanized & ILG				
Designation d x b mm	Wall Thickness mm	Mass kg/m	Metres per Tonne	Pack Size (Lns)
53 x 35	1.6	1.77	854	48
60 x 48	2.0	2.88	347	36
66 x 44	1.6	2.23	448	36
75 x 40	1.6	2.39	418	20
75 x 40	2.0	2.97	336	20
97 x 40	2.0	3.65	273	21
115 x 42	2.0	4.27	234	21
115 x 42	2.5	5.30	188	21
120 x 48	2.0	4.53	220	18

Silo Sections



Painted DualGrade®, SupaGal® DualGrade®, DuraGal® DualGrade®				
Designation d x b mm	Wall Thickness mm	Mass kg/m	Metres per Tonne	Pack Size (Lns)
75 x 64	2.3	4.33	230	36
	2.5	4.75	210	36
	3.0	5.56	179	36
	4.0	7.20	138	24

Features:

- Steel Quality: AS 1163 C350L0 or AS 1163 DualGrade® C350L0/C450L0



Looking for galvanized pipe to bend and form?

Metaland's General Purpose Hot Dipped Galvanized pipe is 300g/m² HDG coated that virtually eliminates flaking or cracking when bending and forming. **No Dramas!**

Call into your nearest branch or visit www.metaland.com.au



Pipe - Painted – 6.5m

onesteel
australian tube mills



Features:

- Extra Light and Light tubular sections are available in DualGrade to meet AS/ NZS 1163 C350, Medium and Heavy meet AS/NZS 1163 C250 and AS 1074. 15nb Medium is supplied to ATM0801 internal specifications.

Typical uses:

- Engineering Construction
- Residential Construction
- Non-Residential Construction
- Mining Investment
- Transport and Storage
- Manufacturing
- Agriculture

Nominal Size (DN)	Section	Outside Diameter mm	Wall Thickness mm	Mass kg/m	Metres per Tonne	Pack Size (Lns)
15	Medium		2.6	1.21	830	217
20	Extra Light	26.9	2.0	1.23	814	127
	Light		2.3	1.40	717	127
	Medium		2.6	1.56	642	127
	Heavy		3.2	1.87	535	127
	Extra Heavy		4.0	2.26	443	127
25	Extra Light	33.7	2.0	1.56	640	91
	Light		2.6	1.99	501	91
	Medium		3.2	2.41	414	91
	Heavy		4.0	2.94	340	91
32	Extra Light	42.4	2.0	1.99	502	61
	Light		2.6	2.55	392	61
	Medium		3.2	3.10	322	61
	Heavy		4.0	3.80	263	61
40	Extra Light	48.3	2.3	2.61	382	61
	Light		2.9	3.25	308	61
	Medium		3.2	3.57	280	61
	Heavy		4.0	4.38	228	61
	Extra Heavy		5.4	5.71	175	61
50	Extra Light	60.3	2.3	3.29	304	37
	Light		2.9	4.11	244	37
	Medium		3.6	5.03	199	37
	Heavy		4.5	6.19	161	37
	Extra Heavy		5.4	7.31	137	37
65	Extra Light	76.1	2.3	4.19	239	37
	Light		3.2	5.75	174	37
	Medium		3.6	6.43	156	37
	Heavy		4.5	7.93	126	37
	Extra Heavy		5.9	10.2	97.9	37
80	Extra Light	88.9	2.6	5.53	181	19
	Light		3.2	6.76	148	19
	Medium		4.0	8.37	120	19
	Heavy		5.0	10.3	96.8	19
	Extra Heavy		5.9	12.1	82.8	19
90	Extra Light	101.6	2.6	6.35	158	19
	Light		3.2	7.77	129	19
	Medium		4.0	9.63	104	19
	Heavy		5.0	11.9	84.0	19
100	Extra Light	101.6	3.2	8.77	114	19
	Light		3.6	9.83	102	19
	Medium		4.5	12.2	82.2	19
	Heavy		5.4	14.5	69.1	19
125	Extra Light	139.7	3.0	10.1	98.9	13
	Light		3.5	11.8	85.1	13
	Medium		5.0	16.6	60.2	13
	Heavy		5.4	17.9	55.9	13
150	Extra Light	165.1	3.0	12.0	83.4	10
	Light		3.5	13.9	71.7	10
	Medium		5.0	19.7	50.7	10
	Heavy		5.4	21.3	47.0	10

Note: End Finish: Plain ends, shouldered, roll grooved, screwed BSP or swaged.

Tubular



Pipe - Galvanized – 6.5m



Features:

- Extra Light and Light tubular sections are available in DualGrade to meet AS/ NZS 1163 C350, Medium and Heavy meet AS/NZS 1163 C250 and AS 1074 and C450, guaranteeing strength and elongation properties. 15nb Medium is supplied to ATM0801 internal specifications.
- HotDipGal galvanized coating has a minimum zinc mass of 300g/m²

Typical uses:

- Engineering Construction
- Residential Construction
- Non-Residential Construction
- Mining Investment
- Transport and Storage
- Manufacturing
- Agriculture

Nominal Size (DN)	Section	Outside Diameter mm	Wall Thickness mm	Mass kg/m	Metres per Tonne	Pack Size (Lns)
15	Medium	21.3	2.6	1.24	806	217
20	Extra Light	26.9	2.0	1.28	784	127
	Light		2.3	1.44	694	127
	Medium		2.6	1.60	623	127
	Heavy		3.2	1.92	522	127
25	Extra Light	33.7	2.0	1.62	616	91
	Light		2.6	2.05	487	91
	Medium		3.2	2.47	404	91
	Heavy		4.0	3.00	334	91
32	Extra Light	42.4	2.0	2.07	483	61
	Light		2.6	2.63	381	61
	Medium		3.2	3.18	315	61
	Heavy		4.0	3.87	258	61
40	Extra Light	48.3	2.3	2.70	369	61
	Light		2.9	3.33	300	61
	Medium		3.2	3.65	274	61
	Heavy		4.0	4.46	224	61
50	Extra Light	60.3	3.0	3.40	294	37
	Light		2.9	4.21	237	37
	Medium		3.6	5.14	195	37
	Heavy		4.5	6.30	159	37
65	Extra Light	76.1	2.3	4.33	231	37
	Light		3.2	5.89	170	37
	Medium		3.6	6.56	152	37
	Heavy		4.5	8.07	124	37
80	Extra Light	88.9	2.6	5.70	176	19
	Light		3.2	6.92	144	19
	Medium		4.0	8.53	117	19
	Heavy		5.0	10.5	95.3	19
90	Extra Light	101.6	2.6	6.53	153	19
	Light		3.2	7.95	126	19
	Medium		4.0	9.81	102	19
	Heavy		5.0	12.1	82.7	19
100	Extra Light	114.3	3.2	8.98	111	19
	Light		3.6	10.0	99.6	19
	Medium		4.5	12.4	80.8	19
	Heavy		5.4	14.7	68.1	19
125	Extra Light	139.7	3.0	10.4	6.4	13
	Light		3.5	12.0	83.2	13
	Medium		5.0	16.9	59.3	13
	Heavy		5.4	18.1	55.2	13
150	Extra Light	165.1	3.0	12.3	81.3	10
	Light		3.5	14.3	70.2	10
	Medium		5.0	20.0	49.9	10
	Heavy		5.4	21.6	46.4	10

Note: End Finish: Plain ends, shouldered, roll grooved, screwed BSP or swaged.

Tubular



DuraGal® CHS - Extra Light – 6.5m

onesteel
australian tube mills



Nominal Size (DN)	Outside Diameter mm	Wall Thickness mm	Mass kg/m	Metres per Tonne	Pack Size (Lns)
20	26.9	2.0	1.23	814	127
25	33.7	2.0	1.56	640	91
32	42.4	2.0	1.99	502	61
40	48.3	2.3	2.61	383	61
50	60.3	2.3	3.29	304	37
65	76.1	2.3	4.19	212	37

Features:

- All tubular sections are available in DualGrade to meet AS/NZS 1163 C350, guaranteeing strength and elongation properties
- DuraGal hot-dip galvanized coatings have a minimum zinc mass of 100g/m² externally

Typical uses:

- Engineering Construction
- Residential Construction
- Non-Residential Construction
- Mining Investment
- Transport and Storage
- Manufacturing
- Agriculture

SupaGal® CHS - Extra Light – 6.5m

onesteel
australian tube mills



Nominal Size (DN)	Outside Diameter mm	Wall Thickness mm	Mass kg/m	Metres per Tonne	Pack Size (Lns)
20	26.9	2.0	1.23	814	127
25	33.7	2.0	1.56	640	91
32	42.4	2.0	1.99	502	61
40	48.3	2.3	2.61	383	61
50	60.3	2.3	3.29	304	37

Features:

- All tubular sections are available in DualGrade to meet AS/NZS 1163 C350, guaranteeing strength and elongation properties
- DuraGal hot-dip galvanized coatings have a minimum zinc mass of 100g/m² externally and internally.

Typical uses:

- Engineering Construction
- Residential Construction
- Non-Residential Construction
- Mining Investment
- Transport and Storage
- Manufacturing
- Agriculture



Farm steel and fencing needs... We've got it all!

From farm gates and fittings, barbed wire, strainer posts and everything in between. Get all your rural farming jobs done with Metaland. **No Dramas!**

Call into your nearest branch or visit www.metaland.com.au



Large Structural CHS



Features:

- All tubular sections are available in standard grade to meet AS/NZS 1163 C350 and C450, guaranteeing strength and elongation properties

Typical uses:

- Engineering Construction
- Residential Construction
- Non-Residential Construction
- Mining Investment
- Transport and Storage
- Manufacturing
- Agriculture

Note: Made to order. Lead times apply.

Size d _o x t (mm)	Mass kg/m	Pack Size (Lns)
168.3 x 4.8	19.4	1
x 6.4	25.6	1
x 7.1	28.2	1
219.1 x 4.8	25.4	1
x 6.4	33.6	1
x 8.2	42.6	1
273.1 x 4.8	31.8	1
x 6.4	42.1	1
x 9.3	60.5	1
x 12.7	81.6	1
323.9 x 6.4	50.1	1
x 9.5	73.7	1
x 12.7	97.5	1
355.6 x 6.4	55.1	1
x 9.5	81.1	1
x 12.7	107	1
406.4 x 6.4	63.1	1
x 9.5	93.0	1
x 12.7	123	1
457.0 x 6.4	71.1	1
x 9.5	105	1
x 12.7	139	1
508.0 x 6.4	79.2	1
x 9.5	117	1
x 12.7	155	1

Tubular



Welding, angle grinders, and power tools...

All the power tools are right here at Metaland to cut it, weld it, grind it and paint it. Call in to your nearest store and ask for our latest special deal. **No Dramas!**

Call into your nearest branch or visit www.metaland.com.au



Precision Tube - Square – 6.1m

onesteel
australian tube mills



Note: Not all sizes are available in every finish & minimum order quantities may apply.
Finishes: Hot rolled, Commercial, Aluminized, Galvatube™
= Galvatube™ finish only
* = WA only

Dimensions mm x mm	Thickness mm	Mass kg/m	Metres per Tonne	Lengths per Pack
19.0 x 19.0	0.9	0.487	2050	168
	1.2	0.640	1560	168
	1.4	0.740	1350	168
	1.6	0.838	1190	168
	2.0	1.03	974	168
22.2 x 22.2	0.9	0.583	1710	168
	1.2	0.769	1300	168
	1.4	0.890	1120	168
	1.6	1.01	991	168
	2.0	1.24	805	168
25.4 x 25.4	0.9	0.668	1497	168
	1.2	0.881	1130	168
	1.4	1.02	979	168
	1.6	1.16	863	168
	2.0	1.43	700	168
30.0 x 30.0	1.2	1.05	956	128
	1.6#	1.38	725	128
31.8 x 31.8	1.2	1.13	885	128
	1.4	1.31	762	128
	1.6	1.49	671	128
	2.0	1.84	542	128
35.0 x 35.0	1.6	1.64	609	84
	2.0	1.99	502	84
	2.3	2.29	4.36	84
38.0 x 38.0	1.2	1.37	729	84
	1.4	1.59	627	84
	1.6	1.81	551	84
	2.0	2.25	445	84
	2.5	2.78	359	84
50.0 x 50.0	1.6	2.39	418	60
	2.0#	2.97	336	60
60.0 x 60.0	1.6	2.89	346	32
	2.0	3.59	279	32
64.0 x 38.0*	1.6	2.37	422	54
76.0 x 38.0*	1.2	1.94	515	49
	1.6	2.65	377	49
	2.0	3.33	300	49



Roofing, Walling and Rainwater products...

When it comes to building a house, shed or just about anything, Metaland's wide range of corrugated sheet, purlins, battens, guttering and flashings has it covered. Drop in and ask us today. **No Dramas!**

Call into your nearest branch or visit www.metaland.com.au



Precision Tube - Rectangular – 6.1m



Note: Not all sizes are available in every finish & minimum order quantities may apply.
 Finishes: Hot rolled, Commercial, Aluminized, Galvatube™
 # = Galvatube™ finish only
 * = WA only

Dimensions mm x mm	Thickness mm	Mass kg/m	Metres per Tonne	Lengths per Pack
25.4 x 12.7	0.9	0.488	2050	180
	1.2	0.642	1560	180
	1.4	0.742	1350	180
	1.6	0.840	1190	180
31.8 x 12.7	1.2	0.762	1310	162
	1.4	0.883	1130	162
	1.6	1.00	999	162
31.8 x 22.2	1.2	0.941	1060	126
	1.4	1.09	916	126
	1.6	1.23	813	126
35.0 x 19.0	1.2	0.950	1050	144
	1.4	1.10	908	144
	1.6	1.25	800	144
	2.0	1.54	648	144
38.1 x 25.4	1.2	1.13	881	80
	1.4	1.32	759	80
	1.6	1.50	668	80
	2.0	1.85	540	80
	0.9	0.81	1240	125
	1.6	1.63	613	110
	1.2	1.32	757	110
	1.4	1.53	652	110
	1.6	1.75	573	110
	2.0	2.16	463	110
	1.2	1.47	679	54
	1.4	1.71	584	54
	1.6	1.95	513	54
	2.0	2.42	413	54
57.0 x 35.0	1.6	2.19	456	72
	2.0	2.72	367	72
70.0 x 34.0	1.6	2.44	410	42
	2.0	3.03	330	42
70.0 x 50.0#	1.6	2.90	345	42
	2.0	3.60	278	42
80.0 x 40.0	1.6	2.89	346	42
	2.0	3.59	279	42
90.0 x 38.0*	2.0	3.84	260	42

Tubular



Fasteners and screws for every application...

Whether it's holding down a roof, putting up a wall or building a fence, Metaland's wide range of fasteners for timber and steel will fix you up. **No Dramas!**

Call into your nearest branch or visit www.metaland.com.au



Precision Tube (ERW) - Circular – 6.1m



Note: Not all sizes are available in every finish & minimum order quantities may apply.
 Finishes: Hot rolled, Commercial, Aluminized, Galvatube™

Size (OD) mm	Thickness mm	Mass kg/m	Metres per Tonne	Lengths per Pack
16.0	1.6	0.568	1760	217
19.0	0.9	0.402	2490	217
	1.2	0.527	1900	217
	1.4	0.608	1650	217
	1.6	0.687	1460	217
	2.0	0.838	1190	217
22.2	0.9	0.473	2120	217
	1.2	0.621	1610	217
	1.4	0.718	1390	217
	1.6	0.813	1230	217
	2.0	0.996	1000	217
	2.6	1.26	796	217
25.4	0.9	0.544	1840	169
	1.2	0.716	1400	169
	1.4	0.829	1210	169
	1.6	0.939	1060	169
	2.0	1.15	866	169
	2.6	1.46	684	169
	3.2	1.75	571	169
28.6	0.9	0.615	1630	169
	1.2	0.811	1230	169
	1.4	0.939	1060	169
	1.6	1.07	936	169
	2.0	1.31	762	169
31.8	0.9	0.686	1460	127
	1.2	0.906	1100	127
	1.4	1.05	953	127
	1.6	1.19	839	127
	2.0	1.47	680	127
	3.2	2.26	443	127
35.0	1.2	1.00	1000	91
	1.6	1.32	759	91
	2.0	1.63	614	91
	2.6	2.08	481	91
	3.2	2.51	398	91
38.0	0.9	0.823	1210	91
	1.2	1.09	918	91
	1.6	1.44	696	91
	2.0	1.78	563	91
	2.6	2.27	441	91
	3.2	2.75	364	91
40.0	1.6	1.52	660	91
41.3	1.2	1.19	843	91
	1.6	1.57	638	91
	2.0	1.94	516	91
	2.6	2.48	403	91
	3.2	3.01	333	91
44.5	0.9	0.968	1030	91
	1.2	1.28	780	91
	1.4	1.49	672	91
	1.6	1.69	591	91
	2.0	2.10	477	91
	2.6	2.69	372	91
	3.2	3.26	307	91

Tubular

Precision Tube (ERW) - Circular – 6.1m



Note: Not all sizes are available in every finish & minimum order quantities may apply.
 Finishes: Hot rolled, Commercial, Aluminized, Galvatube™

Size (OD) mm	Thickness mm	Mass kg/m	Metres per Tonne	Lengths per Pack
47.6	0.9	1.04	965	61
	1.2	1.37	728	61
	1.4	1.60	625	61
	1.6	1.82	551	61
	2.0	2.25	445	61
	2.6	2.89	347	61
	3.2	3.50	285	61
50.8/ 51.0	1.2	1.47	679	61
	1.4	1.71	584	61
	1.6	1.94	515	61
	2.0	2.41	414	61
	2.3	2.75	363	61
	2.5	2.98	335	61
	2.6	3.09	323	61
	3.2	3.76	265	61
54.0	1.2	1.56	640	61
	1.4	1.82	551	61
	1.6	2.07	484	61
	2.0	2.56	390	61
	2.6	3.30	303	61
	3.2	4.01	249	61
57.2	1.2	1.66	603	61
	1.4	1.93	519	61
	1.6	2.19	456	61
	2.0	2.72	367	61
	2.6	3.50	286	61
	3.2	4.26	235	61
60.3	2.6	3.70	270	61
63.5	1.2	1.84	542	37
	1.4	2.14	466	37
	1.6	2.44	409	37
	2.0	3.03	330	37
	2.6	3.90	256	37
	3.2	4.76	210	37
69.9	2.0	3.35	298	37
70.0	1.6	2.70	370	37
76.2	1.2	2.22	451	37
	1.4	2.58	387	37
	1.6	2.94	340	37
	2.0	3.66	273	37
	2.6	4.72	212	37
	3.2	5.76	174	37
88.9	1.2	2.60	385	19
	1.4	3.02	331	19
	1.6	3.44	290	19
	2.0	4.29	233	19
	2.6	5.53	181	19
	3.2	6.76	148	19
100.0	1.6	3.88	257	19
101.6	1.6	3.95	253	19
	2.0	4.91	204	19
	2.6	6.35	158	19
	3.2	7.77	129	19



Precision Tube - Oval – 6.1m

onesteel
australian tube mills



Dimensions mm x mm	Thickness mm	Mass kg/m	Metres per Tonne	Lengths per Pack
Flat Sided Oval				
31.8 x 16.0 (s238)	1.2	0.736	1358	162
	1.6	0.965	1052	162
	2.0	1.18	870	162
50.8 x 15.9 (s223)	1.2	1.09	917	102
	1.6	1.44	877	102
	2.0	1.78	561	102
Special Sections				
s709 (s3232 Lip)	2.0	2.39	418	100

Note: Not all sizes are available in every finish & minimum order quantities may apply.
Finishes: Hot rolled, Commercial, Aluminized, Galvatube™

Tubecolor®

onesteel
australian tube mills



Size mm x mm	Thickness mm	Mass kg/m	Metres per Tonne
76 x 38	1.20	2.29	437
	1.60	3.00	333
90 x 38	2.00	3.68	272
	2.00	4.16	240
90 x 90	2.00	6.02	166
100 x 50	2.00	5.15	194
150 x 50	2.00	6.66	150

Note: Tubecolour® is only readily available in WA. The most popular Colorbond® colours that Tubecolour® is available in are (old Colorbond® name/new Colorbond® name) Smooth Cream™/Classic Cream™, Off White™/Surfmist®, Merino™/Paperbark™ and Sandbank™. However, Kwinana WA facility can powder coat in any Colorbond® colour.



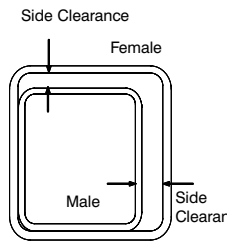
Double the storage in your shed!

DuraGal® Mezzanine floors are a high strength, light-weight, high tensile flooring system designed to easily increase the floor space of new and existing buildings. Easy to build with no welding required. Ask us how at Metaland today. **No Dramas!**

Call into your nearest branch or visit www.metaland.com.au



Telescoping SHS – Square Hollow Sections



Note: RHS is not a precision tube and all dimensions shown in the chart, although in accordance with the specifications, may vary marginally within the tolerance bands permitted.

Sizes shown in bold print are sizes that provide a clearance of less than 2.0mm. The internal weld bead and variation in corner radii between sections will need to be considered when closer fits are indicated. Where telescoping over some length is desired, additional allowance may be needed for straightness. For tight fits it is suggested that some form of testing be carried out prior to committing material.

How to use this chart
See page 35.

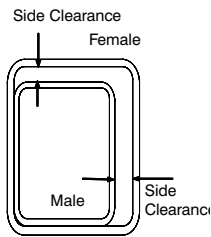
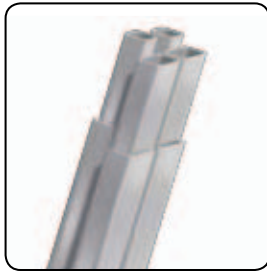
Female (Outer)			Nominal Clearance		Male (Inner)	
d mm	b mm	t mm	Top mm	Side mm	d mm	b mm
20	20	1.6	1.8	1.8		
25	25	1.6	1.8	1.8	20	20
25	25	2.0	1.0	1.0	20	20
25	25	2.5	0.0	0.0	20	20
30	30	1.6	1.8	1.8	25	25
30	30	2.0	1.0	1.0	25	25
35	35	1.6	1.8	1.8	30	30
35	35	2.0	1.0	1.0	30	30
35	35	2.5	0.0	0.0	30	30
35	35	3.0	4.0	4.0	25	25
40	40	1.6	1.8	1.8	35	35
40	40	2.0	1.0	1.0	35	35
40	40	2.5	0.0	0.0	35	35
40	40	3.0	4.0	4.0	30	30
40	40	4.0	2.0	2.0	30	30
50	50	1.6	6.8	6.8	40	40
50	50	2.0	6.0	6.0	40	40
50	50	2.5	5.0	5.0	40	40
50	50	3.0	4.0	4.0	40	40
50	50	4.0	2.0	2.0	40	40
50	50	5.0	0.0	0.0	40	40
65	65	1.6	11.8	11.8	50	50
65	65	2.0	11.0	11.0	50	50
65	65	2.5	10.0	10.0	50	50
65	65	3.0	9.0	9.0	50	50
65	65	4.0	7.0	7.0	50	50
65	65	5.0	5.0	5.0	50	50
65	65	6.0	3.0	3.0	50	50
75	75	2.0	6.0	6.0	65	65
75	75	2.5	5.0	5.0	65	65
75	75	3.0	4.0	4.0	65	65
75	75	3.5	3.0	3.0	65	65
75	75	4.0	2.0	2.0	65	65
75	75	5.0	0.0	0.0	65	65
75	75	6.0	13.0	13.0	50	50
89	89	3.5	7.0	7.0	75	75
89	89	5.0	4.0	4.0	75	75
89	89	6.0	2.0	2.0	75	75
90	90	2.0	11.0	11.0	75	75
90	90	2.5	10.0	10.0	75	75
100	100	2.0	7.1	7.1	89	89
100	100	2.5	6.1	6.1	89	89
100	100	3.0	5.1	5.1	89	89
100	100	4.0	3.1	3.1	89	89
100	100	5.0	1.1	1.1	89	89
100	100	6.0	13.0	13.0	75	75
100	100	9.0	7.0	7.0	75	75
125	125	4.0	17.0	17.0	100	100
125	125	5.0	15.0	15.0	100	100
125	125	6.0	13.0	13.0	100	100
125	125	9.0	7.0	7.0	100	100
150	150	5.0	15.0	15.0	125	125
150	150	6.0	13.0	13.0	125	125
150	150	9.0	7.0	7.0	125	125
200	200	5.0	40.0	40.0	150	150
200	200	6.0	38.0	38.0	150	150
200	200	9.0	32.0	32.0	150	150
250	250	6.0	38.0	38.0	200	200
250	250	9.0	32.0	32.0	200	200

Note: See page 36 for Circular Hollow Sections and 35 for Rectangular Hollow Sections.

Tubular



Telescoping RHS – Rectangular Hollow Sections



Note: RHS is not a precision tube and all dimensions shown in the chart, although in accordance with the specifications, may vary marginally within the tolerance bands permitted.

Sizes shown in bold print are sizes that provide a clearance of less than 2.0mm. The internal weld bead and variation in corner radii between sections will need to be considered when closer fits are indicated. Where telescoping over some length is desired, additional allowance may be needed for straightness. For tight fits it is suggested that some form of testing be carried out prior to committing material.

Note: See page 36 for Circular Hollow Sections and 34 for Square Hollow Sections.

Female (Outer)			Nominal Clearance		Male (Inner)	
d mm	b mm	t mm	Top mm	Side mm	d mm	b mm
50	20	1.6	No section available			
50	20	2.0				
50	20	2.5				
50	20	3.0				
50	25	1.6				
50	25	2.0				
50	25	2.5	No section available			
50	25	3.0				
65	35	2.0				
65	35	2.5	10.0	5.0	50	25
65	35	3.0	9.0	4.0	50	25
65	35	4.0	7.0	2.0	50	25
75	25	1.6	21.8	1.8	50	20
75	25	2.0	21.0	1.0	50	20
75	25	2.5	20.0	0.0	50	20
75	50	1.6	6.8	11.8	65	35
75	50	2.0	6.0	11.0	65	35
75	50	2.5	5.0	10.0	65	35
75	50	3.0	4.0	9.0	65	35
75	50	4.0	2.0	7.0	65	35
75	50	5.0	0.0	5.0	65	35
75	50	6.0	13.0	13.0	50	25
100	50	1.6	20.8	20.8	76	38
100	50	2.0	20.0	20.0	76	38
100	50	2.5	19.0	19.0	76	38
100	50	3.0	18.0	18.0	76	38
100	50	3.5	17.0	17.0	76	38
100	50	4.0	16.0	16.0	76	38
100	50	5.0	14.0	14.0	76	38
100	50	6.0	12.0	12.0	76	38
125	75	2.0	21.0	21.0	100	50
125	75	2.5	20.0	20.0	100	50
125	75	3.0	19.0	19.0	100	50
125	75	4.0	17.0	17.0	100	50
125	75	5.0	15.0	15.0	100	50
125	75	6.0	13.0	13.0	100	50
150	100	4.0	15.0	15.0	127	51
150	100	5.0	13.0	13.0	127	51
150	100	6.0	11.0	11.0	127	51
150	100	9.0	5.0	5.0	127	51
200	100	4.0	40.0	40.0	152	76
200	100	5.0	38.0	38.0	152	76
200	100	6.0	36.0	36.0	152	76
200	100	9.0	30.0	30.0	152	76
250	150	5.0	40.0	40.0	200	100
250	150	6.0	38.0	38.0	200	100
250	150	9.0	32.0	32.0	200	100

How to use this chart

1. Select the appropriate table for the type of hollow section required. Select the size of female (or outside) member closest to your requirements for the left hand column.
2. Depending on the application select the clearance required between the two members. Members may need to slide freely inside each other, or be locked with a pin, spot welded or fixed with wedges. This means, in some cases, a 'sloppy' fit may be suitable, while for others the tightest fit possible may be more appropriate.
3. Having selected the most suitable clearance for your application, take the appropriate size of the male (inner) section from the right hand column, eg:

Female Section (outer)	Clearance mm	Male Section (inner)
75 x 75 x 3.0	4.0x4.0	65 x 65

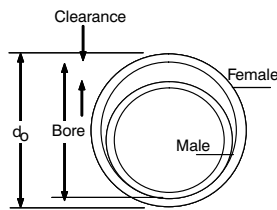
Note that clearance is total available difference between member dimensions, not the gap on both sides.

4. Where two telescoping sections are being used, thickness should be similar and will be determined by normal structural requirements. If a third section is to be used, consideration of both clearance and thickness within the size list available may be required.
5. RHS has the obvious advantage that its shape prevents rotation of the sections. When pipe is used it may need to be fixed against twisting by welding or bolting.
6. Press Fit. For short pieces with no need for separation or sliding an interference fit can be achieved using the available ductility of the steel.

Note: Sizes where clearance is shown as 0.0 will generally require press fit.



Telescoping CHS – Circular Hollow Sections



Note: Clearance = (AS/NZS 1163 Min $d_o - 2t$) - (AS/NZS 1163 Max d_i).

NOTE: CHS is not a precision tube and all dimensions shown in the chart, although in accordance with the specifications, may vary marginally within the tolerance bands permitted.

Sizes shown in bold print are sizes that provide a clearance of less than 2.0mm. The internal weld bead and variation in corner radii between sections will need to be considered when closer fits are indicated. Where telescoping over some length is desired, additional allowance may be needed for straightness. For tight fits it is suggested that some form of testing be carried out prior to committing material.

How to use this chart

1. Select the size of female (or outside) member closest to your requirements for the left hand column.
2. Depending on the application select the clearance required between the two members. Members may need to slide freely inside each other, or be locked with a pin, spot welded or fixed with wedges. This means, in some cases, a 'sloppy' fit may be suitable, while for others the tightest fit possible may be more appropriate. (See Note 6 Press Fit).
3. Having selected the most suitable clearance for your application, take the appropriate size of the male (inner) section from the right hand column, eg:

Female Section (outer)	Male Section (inner)	Clearance mm
76.1 x 5.9	60.3	2.6

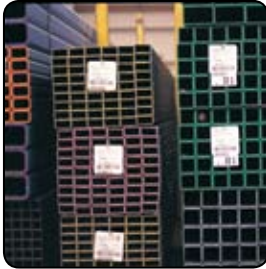
Female (Outer)			Male (Inner)		
DN	Quality	d_o mm x t mm	DN	d_i mm	Min. Clearance mm
20	Extra Light	26.9 x 2.0	15	21.3	0.4
25	Extra Light	33.7 x 2.0	20	26.9	1.6
	Light	x 2.6	20	26.9	0.4
	Medium	x 3.2	15	21.3	4.8
	Heavy	x 4.0	15	21.3	3.2
32	Extra Light	42.4 x 2.0	25	33.7	3.5
	Light	x 2.6	25	33.7	2.3
	Medium	x 3.2	25	33.7	1.1
	Heavy	x 4.0	20	26.9	6.3
40	Extra Light	48.3 x 2.3	32	42.4	0.1
	Light	x 2.9	25	33.7	7.6
	Medium	x 3.2	25	33.7	7.0
	Heavy	x 4.0	25	33.7	5.4
	Extra Heavy	x 5.4	25	33.7	2.6
50	Extra Light	60.3 x 2.3	40	48.3	6.4
	Light	x 2.9	40	48.3	5.2
	Medium	x 3.6	40	48.3	3.8
	Heavy	x 4.5	40	48.3	2.0
	Extra Heavy	x 5.4	40	48.3	0.2
65	Extra Light	76.1 x 2.3	50	60.3	9.8
	Galtube® Plus	x 2.6	50	60.3	9.2
	Light	x 3.2	50	60.3	8.0
	Medium	x 3.6	50	60.3	7.2
	Heavy	x 4.5	50	60.3	5.4
80	Extra Light	88.9 x 2.6	65	76.1	6.0
	Light	x 3.2	65	76.1	4.8
	Medium	x 4.0	65	76.1	3.2
	Heavy	x 5.0	65	76.1	1.2
	Extra Heavy	x 5.9	50	60.3	15.3
90	Extra Light	101.6 x 2.6	80	88.9	5.6
	Light	x 3.2	80	88.9	4.4
	Medium	x 4.0	80	88.9	2.8
	Heavy	x 5.0	80	88.9	0.8
100	Extra Light	114.3 x 3.2	90	101.6	4.1
	Light	x 3.6	90	101.6	3.3
	Medium	x 4.5	90	101.6	1.5
	Heavy	x 5.4	80	88.9	12.6
125	Extra Light	139.7 x 3.0	100	114.3	16.9
	Light	x 3.5	100	114.3	15.9
	Medium	x 5.0	100	114.3	12.9
	Heavy	x 5.4	100	114.3	12.1
150	Light	165.1 x 3.0	125	139.7	15.4
	Medium	x 5.0	125	139.7	12.4
	Heavy	x 5.4	125	139.7	11.6

Note that clearance is total available difference between member dimensions, not the gap on both sides.

4. Where two telescoping sections are being used, thickness should be similar and will be determined by normal structural requirements. If a third section is to be used, consideration of both clearance and thickness within the size list available may be required.
5. Pipe may need to be fixed against twisting by welding or bolting.
6. Press Fit. For short pieces with no need for separation or sliding an interference fit can be achieved using the available ductility of the steel.



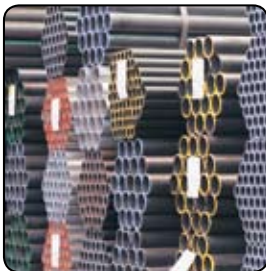
SHS & RHS – End Colour Code



Note: Meets Australian Standard AS/NZS 4496:1997 (Recommended practice for the colour coding of steel products).

Colour	Wall Thickness	
	mm	inch
Purple	1.6	0.063
Chocolate Brown	1.8	0.072
Yellow	2.0	0.080
Silver	2.3	0.091
Pink	2.5	0.098
Gold	2.8	0.110
Dark Blue	3.0	0.118
Grey	3.5	0.138
Green	4.0	0.160
Orange	5.0	0.197
White	6.0	0.236
Pink	7.0	0.276
Red	8.0	0.315
Purple	9.0	0.354

Pipe – End Colour Code



Colour	Gauge
Green end	Extra light (XL)
Yellow end	Light (L)
Blue end	Medium (M)
Red end	Heavy (H)
Cream end	Extra heavy (XH)



Everything you need in steel when you need it!

Throughout our national network of stores, Metaland stocks and supplies tubular pipe and RHS, flats, rounds, angles, rebar, lintels and all the steel accessories products you require. **No Dramas!**

Call into your nearest branch or visit www.metaland.com.au



Plate – Grade 250

Plate



Typical uses:

- General fabrication
- Structural members
- High-rise buildings
- Bridges
- Storage tanks

Features:

- A medium strength structural steel plate product with nominal yield strength of 250 MPa

Notes: Most products are available in approximately 1200 x 2400 mm lengths. Meets Joint Australian / New Zealand Standard AS 3678

Thickness mm	Mass kg/m	Width mm	Length m	kg/lineal metre of plate width
5	39.25	2400	9.0	94.20
		3000	9.0	117.75
6	47.10	2400	6.0	113.04
		2400	9.0	113.04
		3000	9.0	141.30
		3200	12	150.72
8	62.80	1800	6.0	113.04
		2400	6.0	150.72
		2400	9.0	150.72
		3000	9.0	188.40
10	78.50	3200	12	200.96
		1800	6.0	141.30
		2400	6.0	188.40
		2400	9.0	188.40
12	94.20	3000	9.0	235.50
		3200	12	251.20
		1800	6.0	169.56
		2400	6.0	226.08
16	125.60	2400	9.0	226.08
		3000	6.0	282.60
		3000	9.0	282.60
		3200	12	301.44
		1800	6.0	226.08
		2400	6.0	301.44
20	157.00	2400	9.0	301.44
		3000	6.0	376.80
		3000	9.0	376.80
		3200	12	401.92
		1800	6.0	282.60
		2400	6.0	376.80
25	196.25	2400	9.0	376.80
		3000	9.0	471.00
		3200	12	502.40
		1800	6.0	353.25
		2400	6.0	471.00
28	279.80	2400	9.0	471.00
		3000	9.0	588.75
36	282.60	3200	12	628.00
		2400	6.0	527.52
40	314.00	2400	9.0	527.52
		2400	6.0	678.24
45	353.25	2400	9.0	678.24
		2400	6.0	753.60
50	392.50	2400	9.0	753.60
		1800	6.0	565.20
		2400	6.0	753.60



Plate – Grade 250



Typical uses:

- General fabrication
- Structural members
- High-rise buildings
- Bridges
- Storage tanks

Features:

- A medium strength structural steel plate product with nominal yield strength of 250 MPa

Notes: Most products are available in approximately 1200 x 2400 mm lengths. Meets Joint Australian / New Zealand Standard AS 3678

Thickness mm	Mass kg/m	Width mm	Length m	kg/lineal metre of plate width
55	431.75	2400	6.0	1036.20
		2400	8.4	1036.20
60	471.00	1800	6.0	847.80
		2400	6.4	1130.40
70	549.50	1800	6.0	989.10
		2400	6.0	1318.80
80	628.00	1800	6.0	1130.40
		2400	6.0	1507.20
90	706.50	1800	6.0	1695.60
100	785.00	1800	5.6	1413.00
		2400	5.2	1884.00
110	863.50	1800	5.0	1554.30
		2400	4.0	2072.40
120	942.00	1800	4.6	1695.60
		2400	3.1	2260.80
130	1021.0	1800	4.2	1837.80
		2400	3.1	2450.40
140	1099.0	1800	3.9	1978.20
		2400	2.9	2637.60
150	1177.5	1800	3.6	2119.50
		2400	2.7	2826.00

Plate – Grade 350



Typical uses:

- General fabrication
- Structural members
- High-rise buildings
- Bridges
- Storage tanks

Features:

- A medium strength structural steel plate product with nominal yield strength of 350 MPa

Notes: Most products are available in approximately 1200 x 2400 mm lengths. Meets Joint Australian / New Zealand Standard AS 3678

Thickness mm	Mass kg/m	Width mm	Length m	kg/lineal metre of plate width
5	39.25	2400	9.0	94.20
		3000	9.0	117.75
6	47.10	2400	9.6	113.04
8	62.80	2400	9.6	150.72
10	78.50	2400	9.6	188.40
		3100	9.6	243.35
12	94.20	2400	9.6	226.08
		3100	9.6	292.02
16	125.60	2400	9.6	301.44
		3100	9.6	389.36
20	157.00	2400	9.6	376.80
		3100	9.6	486.70
25	196.25	2400	9.6	471.00
32	251.20	2400	9.6	602.88
40	314.00	2400	7.6	753.60
50	392.50	2400	7.6	942.00
60	471.00	2400	7.6	1130.40
70	549.50	2400	6.0	1318.80
80	628.00	2400	5.5	1507.20



Plate – Grade K1042



Typical uses:

- General engineering parts
- Profile cut gears
- Wear/abrasion applications

Features:

- A heat treatable plate grade for general engineering applications

Thickness mm	Mass kg/m	Width mm	Length m	kg/lineal metre of plate width
12	94.20	2400	6.0	226.08
16	125.60	2400	6.2	301.44
20	157.00	2400	6.0	376.80
25	196.25	2400	6.0	471.00
32	251.20	2400	6.3	602.88
40	314.00	2400	7.6	753.60
50	392.50	2400	6.0	942.00
60	471.00	2400	6.0	1130.40
70	549.50	2400	5.8	1318.80
80	628.00	2400	5.0	1507.20

Notes: Meets joint Australian/New Zealand Standard AS/NZS 3678 0 K1042.

Plate – Boiler (AS 1548-7 460 NR)



Typical uses:

- Boiler
- Pressure Vessel

Features:

- A fully killed, fine grained, carbon-manganese steel with a guaranteed minimum tensile strength of 430 MPa

Notes: Meets Australian Standard AS 1548-7 430R

Thickness mm	Mass kg/m	Width mm	Length m	kg/lineal metre of plate width
6	47.10	3100	9.6	146.01
8	62.80	3100	9.6	194.68
10	78.50	3100	9.6	243.35
12	94.20	3100	9.6	292.02
16	125.60	3100	9.6	389.36
20	157.00	3100	9.6	486.70
25	196.25	3100	9.6	608.38
32	251.20	3100	9.6	778.72
40	314.00	2400	9.6	753.60
50	392.50	2400	7.6	942.00
60	471.00	2400	6.0	1130.40
70	549.50	2400	6.0	1318.80
80	628.00	2400	5.2	1507.20
90	706.50	2400	5.2	1695.60
100	785.00	2400	5.2	1884.00

Plate – Pressure Vessel



Thickness mm	Mass kg/m	Width mm	Length m	kg/lineal metre of plate width
5	39.25	2400	9.0	94.20

Typical uses:

- Boiler
- Pressure Vessel

Features:

- A fully killed, fine grained, carbon-manganese steel with a guaranteed minimum tensile strength of 430 MPa

Note: Meets Australian Standard AS 1548-7 430R



Plate – Floor (AS/NZS 3678 – 250)



Thickness mm	Mass kg/m	Width mm	Length m	kg/lineal metre of plate width
6	49.10	1800	6.0	88.38
8	64.80	1800	6.0	116.64
10	80.50	1800	6.0	144.90
12	96.20	1800	6.0	173.16

Typical uses:

- Floorplate

Features:

- Hot rolled structural product with minimum yield strength of 250MPa; good ductility and good weldability

Note: Meets Australian Standard: **AS/NZS 3678 – 250**

Plate – Coil



Thickness mm	Mass kg/m ²	Width mm	
		910-1550	1765-1800
3	23.55	Typically 1200 mm or 1500 mm wide.	Typically 1800mm wide.
4	31.40		
5	39.25		
6	47.10		
8	62.80		
10	78.50	These coils supplied as mill widths.	n/a
12	94.20		n/a

Notes: Meets joint Australian/ New Zealand Standard AS/NZS 1594 - HA250

Typical uses:

- Structural Members
- Roll forming applications
- Brake press forming applications
- General fabrication

Features:

- Hot rolled structural product with minimum yield strength of 250MPa; good ductility and good weldability

Plate – Coil Floor



Thickness mm	Mass kg/m	Width mm	kg/lineal metre of plate width
2.1*	18.54	1200	22.24
3.0	25.55	1200	30.66
5.0	41.25	1200	49.50
		1500	61.88
6.0	49.10	1200	58.92
		1500	73.65
		1800	88.38
8.0	64.80	1500	97.20

Typical uses:

- Floorplate

Features:

- Hot rolled structural product with minimum yield strength of 250MPa; good ductility and good weldability

Note: Most products are available in approximately 1200 x 2400 mm lengths.

*2.1mm Thickness Floorplate is considered 1210mm in width. The above sizes of floor plate coils may weigh approximately 14 tonnes each. Meets Australian Standard: **AS/NZS 1594 – HA250**



Plate – Quench & Tempered

Plate



Typical uses:

- Lining equipment
- Transport equipment
- Mining equipment
- Excavator buckets
- Bridges
- Dump truck wear liners
- Deflector plates
- Earthmoving buckets

Thickness mm	Mass kg/m	Bisalloy 80	Bisalloy 400	Bisalloy 500
		Tensile Strength: Typical – 830 MPa	Tensile Strength: Typical – 1320 MPa	Tensile Strength: Typical – 1640 MPa
5	39.25	1525 x 8000	2485 x 8000	
6	47.10	1525 x 8000		
8	62.80	2485 x 8000	2485 x 8000	
		2485 x 8000	2485 x 8000	
10	78.50	2485 x 8000	2485 x 8000	
12	94.20	3100 x 8000		
		2485 x 8000	2485 x 8000	2485 x 8000
16	125.60		2485 x 8000	2485 x 8000
20	157.00		2485 x 8000	2485 x 8000
25	196.25		2485 x 8000	2485 x 8000
32	251.20		2485 x 8000	2485 x 8000
40	314.00		2485 x 8000	2485 x 8000
50	392.50		2485 x 8000	
60	471.00		2485 x 8000	



Farm steel and fencing needs... We've got it all!

From farm gates and fittings, barbed wire, strainer posts and everything in between. Get all your rural farming jobs done with Metaland. **No Dramas!**

Call into your nearest branch or visit www.metaland.com.au



Get the 'Know How' with our 'How to' brochures

Choosing the correct pipe, making yourself a gate, building a permanent cattle yard or just how to weld correctly are just some of the Metaland Solutions you can access at www.metaland.com.au. So easy to follow. **No Dramas!**

Call into your nearest branch or visit www.metaland.com.au



Plate – International Standards Comparison



Tensile Strength MPa	Australian AS 3678	European EN10025	British BS 4360	German DIN17100	Japanese JIS	American ASTM	International ISO630
290				St33			
300	200						
310						A283A	Fe310-0
330					G3101-SS330		
360		S235JR	40A, B, C, D	St37-2 St37-3		A283B	Fe360A B, C, D
380						A283C	
400					G3101-SS400 G316-SM400 A, B, C	A36, A573-400	
410	250 250L15	S275JR S275JO S275J2G3 S275J2G4			St44-2 St44-3	A283D A284C, D A529 A572-290	
430	300 300L15	Fe430B C, D1, D2	43A, B, C, D			A633A	Fe430A B, C, D
450	350 350L15					A573-450 A572-345	
480	400 400L15	S355JR S355JD S355J2G3				A572-485	
490			50A, B, C, D	S152-3	G3101-SS490 G3106-SM490 A, B, C G3106-SM490 YA, YB		Fe510 B, C, D
520	450 450L15				G3106-SM520 B, C	A572-415	Fe510 B, C, D
540					G3101-SS540		

Plate – Boiler – International Standards Comparison



Tensile Strength MPa	Australian AS 3678	European EN10025	British BS 4360	German DIN17100	Japanese JIS	American ASTM	International ISO630
310						A285-A	
340						A285-B	
360		2-P235GH	151-360 161-360 164-360	H1			P235
380						A285-C A442-55 A515-55 A516-55	
390		3-P275N					
400			151-400 161-400 164-400 224-400	H11	G3103-SB410 G3115-SPV235 G3118-SGV410 G3126-SLA235	A682-A	P265
410		2P265GH			G3118-SGV410		P265
415						A515-65 A518-60	
430	7-430						
440					G3126-SLA325		
450					G3118-SB450 G3118-SGC450	A515-65 A516-65	
460	7-460	2P295GH				A662-B	P290
480					G3103-SB480 G3118-SGC480		
490	7-490		224-490	19Mn6	G3115-SPV3115	A515-70 A516-70 A841	P315
490	5-490	3-P355GH			G3126-SLA360	A537-C11 A737-B A841	P315
510		2-P355GH					P355
520					G3115-SPV355	A299 A455 A738-A	



Sheet – Hot Rolled Formable HA1S Steel



Features:

Skin-passed, Hot-rolled low carbon steel suitable for simple forming, bending and welding operations.

Typical uses:

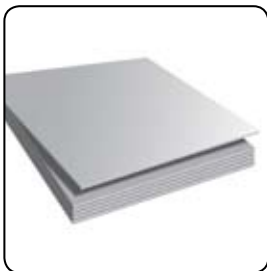
- Shelving
- Light structural members
- Tanks

Note: Meets Australian Standards AS/NZS 1594 and AS/NZS 1365

Base Metal Thickness mm	Width mm	kg/m ²
1.50	1200	11.77
1.50	1210	11.77
1.60	910	12.56
1.60	1195	12.56
1.60	1200	12.56
1.60	1210	12.56
1.95	900	15.30
1.95	1195	15.30
1.95	1200	15.30
1.95	1210	15.30
2.40	1200	18.84
2.50	1195	19.63
2.50	1210	19.63
2.50	1495	19.63
2.50	1510	19.63
2.90	1210	22.77
2.90	1500	22.77
2.95	1200	23.16
2.95	1500	23.16
2.95	1800	23.16
3.00	895	23.55
3.00	1195	23.55
3.00	1210	23.55
3.00	1495	23.55
3.00	1510	23.55
3.00	1800	23.55

Sheet & Coil

Sheet – Hot Rolled Formable Brightform® Steel



Features:

Pickled, skin-passed low carbon steel with a good surface, suitable for bending and moderate drawing and pressing.

Typical uses:

- Tubing
- Shelving
- Simple pressings
- Hidden appliance panels

Base Metal Thickness mm	Width mm	kg/m ²
1.60	910	12.56
1.60	1210	12.56
1.60	1510	12.56
2.00	910	15.70
2.00	1210	15.70
2.00	1510	15.70
2.50	1210	19.63
2.95	1210	23.16
3.00	910	23.55
3.00	1210	23.55

Note: Meets Australian Standard AS/NZS 1365



Sheet – Hot Rolled Pickled HA3-P LY-TEN®



Base Metal Thickness mm	Width mm	kg/m ²
1.60	1210	12.56
2.00	910	15.70
2.00	1210	15.70
2.50	1210	19.63
3.00	1210	23.55
4.00	1210	31.40
5.00	1210	39.25
6.00	1210	47.10

Note: Meets Australian Standards AS/NZS 1594 and AS/NZS 1365

Features:
Hot rolled, formable steel suitable when pickled for medium drawing and heavy pressing operations.

- Typical uses:**
- Agricultural machinery
 - Automotive components
 - Sealed unit housings
 - Mower parts
 - Brackets
 - Furniture

Sheet – Cold Rolled CA3SN-G



Base Metal Thickness mm	Width mm	kg/m ²
0.60	1220	4.71
0.80	1220	6.28
1.00	1220	7.85
1.20	1220	9.42
1.50	1220	11.78
1.60	1220	12.56
2.00	1220	15.70
2.50	1220	19.63
3.00	1220	23.55

Note: Meets Australian Standards AS/NZS 1595

Features:
Cold rolled, skin-passed deep drawing steel guaranteed non-ageing and free from stretcher stain with a general purpose surface.

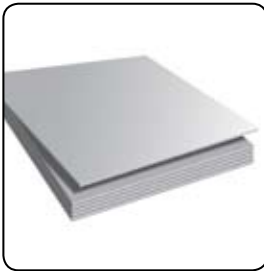
- Typical uses:**
- Unexposed drawn parts for automotive and appliance end uses.

Sheet Weight Quick Reference – Metric Sheet Sizes (raw sheet only)

Sheet Thickness mm	kg/m ²	Sheet Weight (kg)		Sheets per Tonne	
		1800 x 1200	2400 x 1200	1800 x 1200	2400 x 1200
0.5	4.22	9.1	12.2	110	82
0.6	5.00	10.8	14.4	93	69
0.8	6.28	13.6	18.1	74	55
1.0	7.85	17.0	22.6	59	44
1.2	9.42	20.3	27.1	49	37
1.6	12.56	27.1	36.2	37	28
2.0	15.70	33.9	45.2	29	22
2.5	19.63	42.4	56.5	24	18
3.0	23.55	50.9	67.8	20	15



Sheet – Galvabond® G2 Z275



Features:

Galvabond G2 steel is a hot-dipped zinc-coated commercial forming steel with a spangled surface, suitable for general manufacturing. Product is suitable for moderate drawing applications and is suitable for lockseaming up to 1.6mm thick.

Typical uses:

- Tube
- Airconditioning ducts,
- Airconditioning panels,
- Meter boxes
- Trailers
- Partitioning systems
- Cable trays
- Scaffolding planks
- Rendering mesh
- Feeder troughs

Note: Meets Australian Standards AS 1365 and AS 1397

Base Metal Thickness mm	Width mm	kg/m ²
0.40	915	3.43
0.40	1220	3.43
0.45	915	3.82
0.50	1220	4.22
0.55	915	4.61
0.55	1200	4.61
0.55	1220	4.61
0.55	1500	4.61
0.60	1525	5.00
0.70	1220	5.79
0.75	915	6.18
0.75	1200	6.18
0.75	1220	6.18
0.75	1500	6.18
0.80	1525	6.57
0.90	915	7.36
0.90	1220	7.36
0.95	1200	7.75
0.95	1220	7.75
0.95	1500	7.75
1.00	1220	8.14
1.00	1525	8.14
1.10	915	8.92
1.10	1220	8.92
1.15	915	9.32
1.15	1200	9.32
1.15	1220	9.32
1.15	1500	9.32
1.20	1525	9.71
1.50	915	12.07
1.50	1220	12.07
1.50	1500	12.07
1.55	1200	12.46
1.55	1220	12.46
1.55	1500	12.46
1.60	1525	12.85
1.90	1220	15.21
1.95	1200	15.59
1.95	1220	15.59
2.40	1220	19.13
2.45	1200	19.52
2.90	1220	23.06



Accessories to Cut, Weld, Grind, Paint...

Metaland has everything you need to finish that job off. From metal cutting saws to tape measures, welders, safety goggles, paints, primers and more. We've got it in store or we can order it in for you. No Dramas!

Call into your nearest branch or visit www.metaland.com.au



Sheet – Galvaskin® G2 Z200



Features:

Galvaskin G2 Steel is a hot-dipped, zinc coated commercial forming steel with a spangled surface, suitable for general purpose forming, and because of its light coating mass is suggested for internal applications only. Guaranteed for lock-forming up to a base thickness of 1.60mm

Typical uses:

- Internal sections
- Shelving

Base Metal Thickness mm	Width mm	kg/m ²
0.40	915	3.36
0.40	1220	3.36
0.45	915	3.75
0.50	1220	4.15
0.55	915	4.54
0.55	1200	4.54
0.55	1220	4.54
0.55	1500	4.54
0.60	1525	4.93
0.70	1220	5.72
0.75	915	6.11
0.75	1200	6.11
0.75	1220	6.11
0.75	1500	6.11
0.80	1525	6.50
0.90	915	7.29
0.90	1220	7.29
0.95	1200	7.68
0.95	1220	7.68
0.95	1500	7.68
1.00	1220	8.07
1.00	1525	8.07

Note: Meets Australian Standards AS 1365 and AS 1397

Sheet – Zincanneal® G2S ZF100



Features:

Zincanneal G2S is a matte hot-dipped zinc/iron alloy-coated commercial forming steel with a skin-passed smooth surface suitable for direct-on painting. Some powdering of the coating may occur with severe deformation.

Typical uses:

- Exposed painted panels
- Non-exposed automotive panels
- Washing machines
- Acoustic ceiling tiles
- Door frames
- Switchboards
- Commercial fridges & freezers

Base Metal Thickness mm	Width mm	kg/m ²
0.50	1220	4.06
0.55	1220	4.45
0.70	1220	5.63
0.75	1220	6.02
0.80	1200	6.41
0.90	915	7.19
0.90	1220	7.19
0.95	1200	7.59
0.95	1220	7.59
1.00	1200	7.98
1.10	1050	8.77
1.10	1200	8.77
1.10	1220	8.77
1.15	1200	9.16
1.15	1220	9.16
1.20	1200	9.55
1.40	1220	11.12
1.50	915	11.91
1.50	1200	11.91
1.50	1220	11.91
1.55	1200	12.29
1.60	1200	12.69
1.90	1220	15.05
1.95	1200	15.44

Note: Meets Australian Standards AS 1365 and AS 1397



Sheet – Zincalume® G300 ZF100

Zincalume®



Base Metal Thickness mm	Width mm	kg/m ²
0.40	1200	3.31
0.55	1200	4.49
0.55	900	4.49
0.75	1200	6.06
1.00	900	8.02
1.00	1200	8.02
1.20	900	9.59
1.20	1200	9.59

Note: Meets Australian Standards AS 1365 and AS 1397

Features:
Zincalume G300 steel is a hot-dipped zinc/aluminium alloy-coated structural steel with a regular spangle surface and a guaranteed minimum yield strength of 300MPa with good ductility. Suitable for roll forming to a minimum internal diameter of 1t.

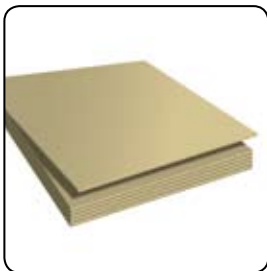
Typical uses:

- Rainwater goods
- Gutters
- Garden sheds

Sheet & Coil

Sheet – Colorbond® CG300 AZF150

Colorbond®



Size mm x mm x mm	Colours	Mass sheets/tonne	
1200 x 2400 x 0.55	Headland®	76	
	Manor Red®		
	Jasper®		
	Sandbank®		
	Classic Cream™		
	Surfmist®		
	Paperbark®		
	Dune®		
	Shale Grey™		
	Windspray®		
	Woodland Grey®		
	Bushland®		
	Pale Eucalypt®		
	Wilderness®		
	Cottage Green®		
	Monument™		
1200 x 2400 x 0.55	Deep Ocean®	76	
	Ironstone®		
	Evening Haze®		
	Loft®		
	Surfmist®		
	x 3050 x 0.55		60
	x 3660 x 0.55		51
x 2440 x 0.55	Appliance	76	
	Sign White		
	x 1800 x 0.55		100
	x 2400 x 0.55		75
	x 2400 x 0.80		63
x 3000 x 0.80	43		

Features:
Colorbond prepainted steel is specifically designed by BlueScope Steel to provide a high durability, premier cladding and roofing material for general use.

Typical uses:

- Roofing & accessories
- Wall cladding
- Rainwater goods.

All colours listed above are trademarks or registered trademarks of BlueScope Steel Ltd.

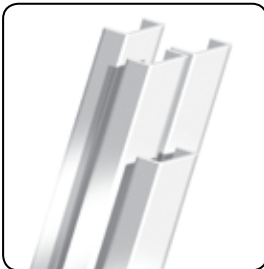


Aluminium Angles – Architectural Alloy (6060/6063)



A	B	T	R1	R2	Alloy/ Temper	Length mm	kg/ length
20	20	1.6				6500	1.105
20	20	3				6500	2.002
25	25	1.6				6500	1.391
25	25	3				6500	2.477
32	25	3				6500	2.906
32	32	3				6500	3.289
40	25	3				6500	3.348
40	40	3				6500	4.160
40	40	4				6500	5.473
40	40	6				6500	7.989
50	25	3				6500	3.887
50	50	3				6500	5.109
50	50	4				6500	6.910
50	50	6				6500	10.140
75	25	3				6500	5.259

Aluminium Channels – Architectural Alloy (6060/6063)



A	B	C	T1/T2	R1	R2	Length mm	kg/ length
25	25	25	3			6500	3.725
40	20	20	3			6500	4.011
40	25	25	3			6500	4.531
41.5	22.5	22.5	3		3	6500	4.355
50	25	25	3			6500	5.070
60	32	32	3			6500	6.390
80	25	25	3			6500	6.689

Aluminium



Double the storage in your shed!

DuraGal® Mezzanine floors are a high strength, light-weight, high tensile flooring system designed to easily increase the floor space of new and existing buildings. Easy to build with no welding required. Ask us how at Metaland today. **No Dramas!**

Call into your nearest branch or visit www.metaland.com.au

Aluminium Flat Bar – Architectural Alloy (6060/6063)



W	T	R	Length mm	kg/length
20	3		4000	0.664
25	3		4000	0.832
25	6		4000	1.664
25	10		4000	2.776
32	3		4000	1.064
32	6		4000	2.124
32	10		4000	3.552
40	3		4000	1.332
40	4		4000	1.776
40	6		4000	2.664
40	10		4000	4.444
50	3		4000	1.664
50	4		4000	2.220
50	6		4000	3.332
50	10		4000	5.536
50	12		4000	6.664
60	6		4000	4.000
60	10		4000	6.664
60	12		4000	8.000
80	3		4000	2.656
80	6		4000	5.312
80	10		4000	8.888
100	3		4000	3.332
100	6		4000	6.664
100	10		4000	11.108
100	12		4000	13.332
160	6		4000	10.664
160	10		4000	17.776

Aluminium



**Farm steel and fencing needs...
We've got it all!**

From farm gates and fittings, barbed wire, strainer posts and everything in between. Get all your rural farming jobs done with Metaland. **No Dramas!**

Call into your nearest branch or visit www.metaland.com.au



**Looking for galvanized pipe
to bend and form?**

Metaland's General Purpose Hot Dipped Galvanized pipe is 300g/m2 HDG coated that virtually eliminates flaking or cracking when bending and forming. **No Dramas!**

Call into your nearest branch or visit www.metaland.com.au

Aluminium Flat Bar – Architectural Alloy (6060 T5)



Size mm	Length mm	Mass/In
12 x 3	4000	0.396
20 x 3	4000	0.664
25 x 3	4000	0.832
25 x 4	4000	1.112
25 x 6	4000	1.660
25 x 10	4000	2.776
32 x 3	4000	1.068
32 x 6	4000	2.124
32 x 10	4000	3.544
40 x 3	4000	1.328
40 x 4	4000	1.772
40 x 6	4000	2.656
40 x 10	4000	4.428
50 x 3	4000	1.660
50 x 4	4000	2.220
50 x 5	4000	2.768
50 x 6	4000	3.332
50 x 8	4000	5.000
50 x 10	4000	5.556
50 x 12	4000	6.664
60 x 6	4000	3.984
60 x 10	4000	6.640
60 x 12	4000	7.972
76.2 x 6.4	4000	5.380
80 x 3	4000	2.664
80 x 6	4000	5.312
80 x 10	4000	8.888
100 x 3	4000	3.332
100 x 6	4000	6.644
100 x 10	4000	11.072
100 x 12	4000	13.328
160 x 6	4000	10.628
160 x 10	4000	17.772

Aluminium Round Bar – Architectural Alloy (6060/6063)



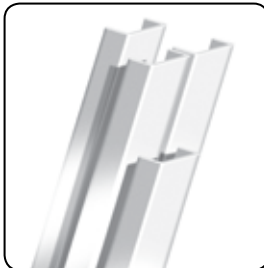
Diameter	Length mm	kg/sheet
12	6000	1.884
16	6000	3.348
25.4	6000	5.628
33	6000	14.25

Aluminium Angles – Structural Alloy (6082/6061/6005A)



A	B	T	R1	R2	Alloy/ Temper	Length mm	kg/ length kg/ length
50	50	4				6500	6.929
50	50	6				6500	10.205
60	60	6		4		6500	12.363
80	50	6		4		6500	13.442
80	80	6		4		6500	16.679
80	80	10		6		6500	27.118
100	50	6		4		6500	15.600
100	80	10				6500	31.031
150	80	10				6500	30.560

Aluminium Channels – Structural Alloy (6082/6061/6005A)



A	B	C	T1/T2	R1	R2	Length mm	kg/ length
80	40	40	6		4	6500	16.094
100	50	50	6.0/9.0		6	6500	25.311
152.4	63.5	63.5	6.3/7.9		10.67	7000	37.240
160	60	60	9		6	6500	35.035
180	80	80	11		6	6500	48.984
200	90	90	10	10	10	6100	54.089
381	152.4	152.4	12.7	15.9		2500	50.210

Aluminium Flat Bar – Structural Alloy (6082/6061/6005A)



W	T	R	Length mm	kg/sheet
50	6		6000	4.998
80	6		6000	7.998
80	8		6000	10.662
100	6		6000	9.996



Welding, angle grinders, and power tools...

All the power tools are right here at Metaland to cut it, weld it, grind it and paint it. Call in to your nearest store and ask for our latest special deal. **No Dramas!**

Call into your nearest branch or visit www.metaland.com.au

Aluminium Flat Bar – Structural Alloy (6061 T6)



Size mm	Length mm	kg/sheet
40 x 6	6000	3.984
50 x 6	6000	4.998

Aluminium Round Bar – Structural Alloy (6082/6061/6005A)



Diameter	Length mm	kg/sheet
20	6500	5.668

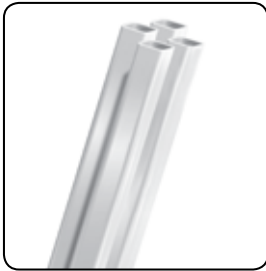
Aluminium Hollow & Tubes – Square Edge Hollow Sections (6060 T5)



Squares		
Size mm	Length mm	Mass/ln
12.5 x 12.5 x 1.59	6500	1.222
25 x 25 x 2.0	6500	3.309
25 x 25 x 3.0	6500	4.752
32 x 32 x 2.0	6500	4.316
32 x 32 x 3.0	6500	6.266
40 x 40 x 1.6	6500	4.427
40 x 40 x 2.0	6500	5.467
40 x 40 x 3.0	6500	7.989
50 x 50 x 2.5	6500	8.541
50.8 x 50.8 x 3.2	6500	10.894
63.5 x 63.5 x 3.2	6500	13.689



Aluminium Hollow & Tubes – Square Edge Hollow Sections (6060 T5)



Rectangular		
Size mm	Length mm	Mass/In
40 x 25 x 2.5	6500	5.395
50 x 25 x 3.0	6500	7.449
50 x 40 x 3.0	6500	9.068
50.8 x 25.4 x 2.35	6500	6.084
60 x 40 x 3.0	6500	10.147
60 x 50 x 3.0	6500	11.226
76.2 x 25.4 x 2.36	6500	8.281
80 x 40 x 3.0	6500	12.305
80 x 50 x 3.0	6500	13.384
100 x 50 x 3.0	6500	15.542
150 x 50 x 3.0	6500	20.937
200 x 50 x 3.0	6500	26.338

Aluminium Hollow & Tubes – Radius Edge Hollow Sections (6060 T5)



Squares		
Size mm	Length mm	Mass/In
19 x 19 x 1.6	6500	1.937
20 x 20 x 3.0	6500	3.523
25 x 25 x 3.0	6500	4.609
25.4 x 25.4 x 1.2	6150	1.882
50 x 50 x 1.7	5410	4.690
50.8 x 50.8 x 2.03	6500	6.799
50.8 x 50.8 x 3.2	6500	10.576
76.2 x 76.2 x 6.35	12000	54.204
100 x 100 x 3.0	6500	20.294

Aluminium Hollow & Tubes – Radius Edge Hollow Sections (6060 T5)



Rectangular		
Size mm	Length mm	Mass/In
38.1 x 25.4 x 1.5	4810	2.328
38.1 x 25.4 x 1.5	5000	2.420
38.1 x 25.4 x 1.5	6000	2.904
101.6 x 76.2 x 2.35	12000	25.152
152 x 76 x 6	6000	45.420
152 x 76 x 6	12000	90.840

Aluminium



Aluminium Hollow & Tubes – Round Tubes (6060)



Size mm	Length mm	Mass/In
12 x 1.6	6000	0.870
16 x 1.2	6000	0.924
16 x 1.6	6000	1.200
19 x 1.2	6000	1.116
20 x 1.2	5900	1.158
20 x 1.6	6500	1.664
22 x 1.5	6500	1.742
25 x 1.6	6500	2.119
25 x 3.0	6500	3.731
25.4 x 1.22	6500	1.677
32 x 1.6	6500	2.750
32 x 3.0	6500	4.914
40 x 1.6	6500	3.471
40 x 3.0	6500	6.279
50 x 6.0	4750	10.901
63.5 x 6.35	4720	14.892
80 x 2.0	6500	8.814
100 x 2.0	6500	11.500
100 x 3.0	6500	16.445

Aluminium Hollow & Tubes – Round Tubes (6060 T591)



Size mm	Length mm	Mass/In
38.1 x 3.2	6500	6.481
44.5 x 3.2	6500	8.060
48.4 x 4.7	6500	11.115
50 x 2.0	6500	5.421
50 x 3.0	6500	7.969
50 x 4.0	6500	10.400
60 x 2.0	6500	6.559
60 x 3.0	6500	9.659
60 x 5.0	6500	15.600
63.5 x 3.2	4800	8.011
76.2 x 4.7	6000	17.526
80 x 3.0	6500	13.052

Aluminium Hollow & Tubes – Round Tubes (6061 T6 / 6082 T6)



Size mm	Length mm	Mass/In
38.1 x 3.2	6000	5.982
48.4 x 4.47	6100	10.431
63.5 x 6.3	6000	18.930
75 x 7.0	6500	26.897
88.9 x 6.35	6500	29.621
101.6 x 6.35	6500	34.177
114.3 x 6.35	6500	39.039
180 x 6.0	6500	59.001



Aluminium Sheet & Plate – Sheet (5005 H34)



Thickness mm	Width mm	Length mm	kg/sheet
0.60	1200	2400	4.683
0.80	1200	2400	6.244
1.00	1200	1800	5.854
1.00	1200	2400	7.805
1.20	1200	1800	7.024
1.20	1200	2400	9.366
1.20	1200	3000	11.707
1.60	1200	2400	12.488
1.60	1200	3000	15.610
1.60	1200	3600	18.732
2.00	1200	1800	11.707
2.00	1200	2400	15.610
2.00	1200	3000	19.512
2.00	1200	3600	23.414
2.00	1500	3600	29.268
2.50	1200	2400	19.512
3.00	1200	2400	23.414
3.00	1200	3000	29.268
3.00	1200	3500	35.122
4.00	1200	2400	31.219
5.00	1200	2400	39.024
6.00	1200	2400	46.829

Aluminium Sheet & Plate – Sheet (5005 H34 – PVC Coated)



Thickness mm	Width mm	Length mm	kg/sheet
1.20	1200	1800	7.024
1.20	1200	2400	9.366
1.60	1200	2400	12.488
2.00	1200	1800	11.707
2.00	1200	2400	15.610
2.50	1200	2400	19.512
3.00	1200	2400	23.414

Aluminium Sheet & Plate – Sheet (5052 H32)



Thickness mm	Width mm	Length mm	kg/sheet
1.60	1200	2400	12.488
2.00	1200	2400	15.610
2.00	1200	6000	39.024
2.50	1200	2400	19.512
2.50	1200	6000	48.780
2.50	1500	2400	24.390
2.50	1500	6000	60.975
3.00	1200	2400	23.414
3.00	1200	6000	58.536
4.00	1525	6100	100.839

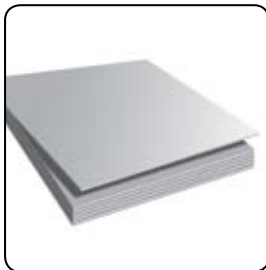


Aluminium Sheet & Plate – Sheet (5251 H38)



Thickness mm	Width mm	Length mm	kg/sheet
1.60	750	3000	9.756
1.60	900	1800	7.024
1.60	900	2400	9.366
1.60	1200	2400	12.488

Aluminium Sheet & Plate – Sheet (Cargo Van – 3003 H14 – PVC Coated)



Description	Thickness mm	Width mm	Length mm	kg/sheet
Flat	0.80	1200	2400	6.244
Ribbed	0.80	1200	2400	6.244

Aluminium Sheet & Plate – Sheet (Stucco Embossed MF5005 H34)



Thickness mm	Width mm	Length mm	kg/sheet
0.70	1200	2400	5.463

Aluminium Sheet & Plate – Treadplate (3003 H22 – Propellor Bright)



Thickness mm	Width mm	Length mm	kg/sheet
1.60	1219	2438	14.104
3.00	1219	2438	26.806

Aluminium

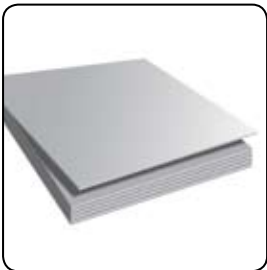


Aluminium Sheet & Plate – Treadplate (5052 0 – 5BAR)



Thickness mm	Width mm	Length mm	kg/sheet
1.60	1200	2400	13.577
2.00	1200	2400	17.122
2.50	1200	2400	21.845
3.00	1200	2400	25.978
3.00	1200	3600	38.963
3.00	1525	3658	50.312
5.00	1200	2400	40.738
5.00	1200	3600	61.103
6.00	1200	2400	49.001
6.00	1200	3600	73.505

Aluminium Sheet & Plate – Plate (5083 H321/116 DNV)



Thickness mm	Width mm	Length mm	kg/sheet
3.00	1200	2400	23.414
3.00	1200	6100	59.512
3.00	1525	6100	75.629
3.00	2200	9000	160.970
4.00	1200	2400	31.219
4.00	1200	6100	79.349
4.00	1525	6100	100.840
4.00	1830	6100	121.010
4.00	2200	9000	214.620
4.00	2200	10000	238.480
5.00	1200	2400	39.024
5.00	1200	6100	99.186
5.00	1525	6100	126.050
5.00	1830	6100	151.260
5.00	1830	11000	272.760
5.00	2200	9000	268.290
6.00	1200	2400	46.829
6.00	1200	6100	119.020
6.00	1525	6100	151.260
6.00	1830	6100	181.510
6.00	2200	9000	321.950
8.00	1200	2400	62.438
8.00	1830	6100	242.010
8.00	2200	9000	429.260
10.00	1200	2400	78.048
10.00	1200	6000	195.120
10.00	1830	6100	302.520
12.00	1200	2400	93.658
12.00	1200	6000	234.140
16.00	1200	2400	124.880
16.00	1200	6000	312.192
20.00	1200	2400	156.100
20.00	1200	6100	396.740
25.00	1200	2400	195.120

Aluminium

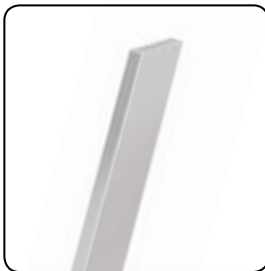


Stainless Steel – Angle (Grades 304, 316)



Size mm x mm	Mass kg/m
25 x 25 x 3	1.13
x 5	1.77
x 6	2.06
30 x 30 x 3	1.36
x 5	2.17
x 6	2.53
x 5	1.02
x 6	1.21
40 x 40 x 3	1.85
x 5	2.98
x 6	3.49
50 x 50 x 3	2.36
x 5	3.79
x 6	4.46

Stainless Steel – Flat Bar (Grades 304, 316)



Note: Range of Stainless Steel includes: Grades: 304, 304L, 316, 316L

Size mm x mm	Mass kg/m
12 x 3	0.29
x 6	0.58
20 x 3	0.49
x 5	0.81
x 6	0.98
25 x 3	0.61
x 5	1.02
x 6	1.21
x 10	2.04
x 12	2.45
32 x 3	0.77
32 x 5	1.30
x 6	1.57
x 10	2.62
40 x 3	0.98
x 5	1.61
x 6	1.96
x 10	3.27
x 12	3.92
50 x 3	1.21
x 5	2.04
x 6	2.45
x 10	4.08
50 x 12	4.90
65 x 5	2.61
x 6	3.18
65 x 10	5.31
75 x 5	3.06
x 6	3.68
x 10	6.04
x 12	7.25
100 x 6	4.91
x 10	8.18



Stainless Steel – Round Bar (Grades 304, 316 & 430)



Diameter mm	Mass kg/m
3.18	0.06
4.76	0.14
6.35	0.25
7.94	0.39
9.00	0.50
10.0	0.62
12.0	0.89
12.7	0.99
15.9	1.55
16.0	1.58
19.1	2.24
20.0	2.47
22.2	3.04
24.0	3.55
25.4	3.98
30.0	5.55
31.8	6.21
32.0	6.31
35.0	7.55
38.1	8.94
40.0	9.86
44.5	12.18
50.8	15.90
54.0	17.95
57.2	20.13
63.5	24.85
66.7	27.39
69.9	30.07
76.2	35.76
82.6	42.00
88.9	48.69
101.6	63.62
127	99.40

Stainless Steel – Austenitic Sheet & Coil



Grade	Thickness Range mm	Width mm
316	0.55 to 6.00	914, 1219, 1500, 1525
304	0.55 to 6.00	914, 1219, 1500, 1525

Note: Range of Stainless Steel includes:
 Grades: 304, 316, 430
 Finishes: 2B, No. 4 Polished, bright annealed

Stainless Steel – Ferritic Sheet & Coil



Grade	Thickness Range mm	Width mm
430	0.55 to 0.9	914, 1219

Note: Range of Stainless Steel includes:
 Grades: 304, 316, 430
 Finishes: 2B, No. 4 Polished, bright annealed

Stainless Steel



LiteSteel® beam – Various Standard Lengths



Standard Lengths

All LSB sizes listed in the tables are readily available from authorised LSB distribution outlets in standard lengths. However, the availability should be checked for large quantities of individual sizes and for non-standard lengths.

LSB AZ+ Section Designation d b _f t	Dimensions					Length Availability		
	Mass kg/m	AZ+ Coating Mass g/sqm	Height mm	Width mm	Thickness mm	8.0 m	12.0 m	13.5 m
300 x 75 x 3.0 LSB	14.5	120	300	75	3.0	✓	✓	✓
x 2.5 LSB	12.2	120	300	75	2.5	✓	✓	✓
300 x 60 x 2.0 LSB	8.80	150	300	60	2.0	✓	✓	✓
250 x 75 x 3.0 LSB	13.3	120	250	75	3.0	✓	✓	✓
x 2.5 LSB	11.2	120	250	75	2.5	✓	✓	✓
250 x 60 x 2.0 LSB	8.00	150	250	60	2.0	✓	✓	✓
250 x 60 x 2.5 LSB	8.86	120	200	60	2.5	✓	✓	✓
x 2.0 LSB	7.21	150	200	60	2.0	✓	✓	✓
200 x 45 x 1.6 LSB	4.95	150	200	45	1.6	✓	✓	✓
150 x 45 x 2.0 LSB	5.31	150	150	45	2.0	✓	✓	✓
x 1.6 LSB	4.32	150	150	45	1.6	✓	✓	✓

Benefits:

- Light, long and strong
- Superior surface coating performance against atmospheric corrosion
- Won't Rot, warp & twist.
- Is impervious to the attack of termite and the ingress of Embers in bush fire zones.
- Standard range of accessories and consumables to make life onsite easier

The full range of LSB sections is summarized in the table below. Sections can be ordered in non-standard lengths subject to minimum order requirements and mill rolling schedules.

Size mm	Non-Standard Lengths m
300 x 75	6.0 to 13.5
300 x 60	
250 x 75	
250 x 60	
200 x 60	
200 x 45	
150 x 45	

Note: Standard lengths may vary in some states. Please check with your local supplier when ordering.

Mechanical Properties

The DuoSteel grade LiteSteel beam is manufactured from a base steel which has a minimum yield stress $f_y = 380$ MPa and a tensile strength $f_u = 490$ MPa. The cold-forming process enhances the yield stress and tensile strength of the flanges of the LSB in the same way it does for rectangular hollow sections, producing a formed section which complies with the following requirements:

Location	Minimum Yield Stress f_y MPa	Minimum Tensile Strength f_u MPa	Minimum Elongation as a proportion of Gauge Strength of $5.65\sqrt{s_0}$ %
Web	380	490	14
Flanges	450	500	14

These values are monitored by testing in accordance with AS1391.

LiteSteel® beam – Various Standard Lengths



Coatings Compared

Research has shown that LiteSteel beam with AZ+ is ideal for external use in moderate environments without the need for a painted top coat. Other pre-galvanized coatings simply don't make the grade, with expensive paints required to achieve the corrosion protection required by BCA guidelines.

Comparison and Suitability of Protective Coatings:

Coatings	Moderate Environment		Severe Environment	
	More than 1 km from breaking surf, or more than 100 m from salt water not subject to breaking surf, or non-heavy industrial areas			
	Internal	External	Internal	External
LSB AZ+	✓	✓	✓	Paint Top Coat Required
Hot Dip Galvanised (post manufacture)	✓	✓	✓	Suppliers Recommendation
Z200 (100 g/m ² per side)	✓	Paint Top Coat Required	Paint Top Coat Required	✗
Prime Painted	✓	Paint Top Coat Required	Paint Top Coat Required	✗

Benefits:

- Light, long and strong
- Superior surface coating performance against atmospheric corrosion
- Won't Rot, warp & twist.
- Is impervious to the attack of termite and the ingress of Embers in bush fire zones.
- Standard range of accessories and consumables to make life onsite easier

Notes:

- ✓ means that the protective coating satisfies the requirements of Table 3.4.4.2 of the BCA Volume Two.
- 'Paint Top Coat Required' means that a paint top coat treatment is needed to satisfy the requirements of Table 3.4.4.2 of the BCA Volume Two.
- 'Prime Painted' refers to standard water based EnviroKote paint primer.
- The comparative performance of the AZ+ coating with the other coatings is obtained from the following references:
 - Smorgon Steel Reinforcing, Sunshine Laboratory (2007), "Test Report No. TR07-01 (including NATA Endorsed Test Certificate 06N001)", Victoria, Australia, 10 January 2007.
 - Townsend, H. E. and Borzillo, A. R. (1997), "55% Al-Zn Alloy Coated Sheet Steel: The Versatile, Long Lasting Building Panel Steel", 5th International Conference on Zinc Coated Steel Sheet, Birmingham, England, 12-13 June 1997.
- The distances listed in this table defining moderate and severe environments are minimum distances and should be used as a guide only. The appropriate distance from breaking surf or from salt water not subject to breaking surf depends on regional factors, and may be significantly larger. In some locations, the acceptable distance from breaking surf could extend as far as 10 to 50 km inland. Local factors such as prevailing winds, topography, shielding by other buildings and trees, and exposure to rain will also influence the classification of the exposure environment. The nature of a structure and the design details of that structure may also have a significant affect on the susceptibility of individual members to corrosion. AZ+ is not recommended for use in non-sealed decks and verandahs within the splash zone of swimming pools. If you are uncertain as to the suitability of a protective coating for your intended application, please refer to AS/NZS 2312. As a guide, AZ+ is considered to last 3 to 4 times longer than galvanised coatings of equal coating mass under the same exposure conditions.



DuraGal® Carport



The DuraGal® Carport system offers:

- A lightweight, efficient structure constructed from high strength GAL140™ RHS.
- A cost-effective coating system. The internal and external hot dip galvanized coating applied provides a product ready for use.
- Proprietary fittings allow fast and efficient assembly.
- A selection of sizes includes cyclone ratings to suit all markets.

The DuraGal® Carport uses high strength C450L0 grade galvanised GAL140™ Hollow Sections. The sections are strong and lightweight making them easy and safe to handle on site. The DuraGal® Carport is designed using a range of speciality fittings to allow safe and easy construction.

Size range	Description	GAL140™ sizes
Standard Height – 2.150m • 5.4 x 3.0 & 5.4 (m) • 6.0 x 3.0, 3.6 & 6.0 (m) • 7.0 x 3.6 & 6.0 (m)	Rafters	150 x 50 x 2.0/3.0
		100 x 50 x 1.6/2.0
	Purlins	150 x 50 x 2.0/3.0
		100 x 50 x 1.6/2.0
	Posts	90 x 90 x 2.0

Advantages of the DuraGal® Carport

- Material pre-cut and delivered direct to site as a flat pack, ready to install
- Reduced edges minimise the chance of vermin perching and nesting
- No protruding fasteners
- Easy and quick to erect
- Visually pleasing clean lines
- Simple Purlin fixing
- Self-drilling screws allow speedier assembly
- Easily cleaned
- No welding and no time-consuming bolted connections
- Includes 90 x 90 mm posts



Note: For fasteners refer to page 89.



DuraGal Flooring System®



Fully engineered system

The DuraGal Flooring System® is a fully engineered steel flooring system* developed to provide a fire and termite resistant, economical and easy-to-install alternative to conventional timber bearers and joists.

Easy to install

The DuraGal Flooring System® uses high strength C450L0 grade galvanized GAL140™ Hollow Sections. The sections are strong and lightweight making them easy to handle on site. GAL140™ is easy to cut and drill, and best of all the system has been designed so that it simply screws together on site using a screw gun fitted with a hex head bit. The DuraGal Flooring System® features a range of speciality galvanized fittings designed to allow you to get on with the job easily and quickly. Fast and accurate levelling of the floor using the adjustable piers during and after construction is a great feature.

Sheet flooring can still be attached in the traditional way using building adhesive and gun-nailing. Most reputable nail tool suppliers have hardened tipped nails to suit common nail guns to attach sheet flooring to steel joists up to and including 2mm thick.

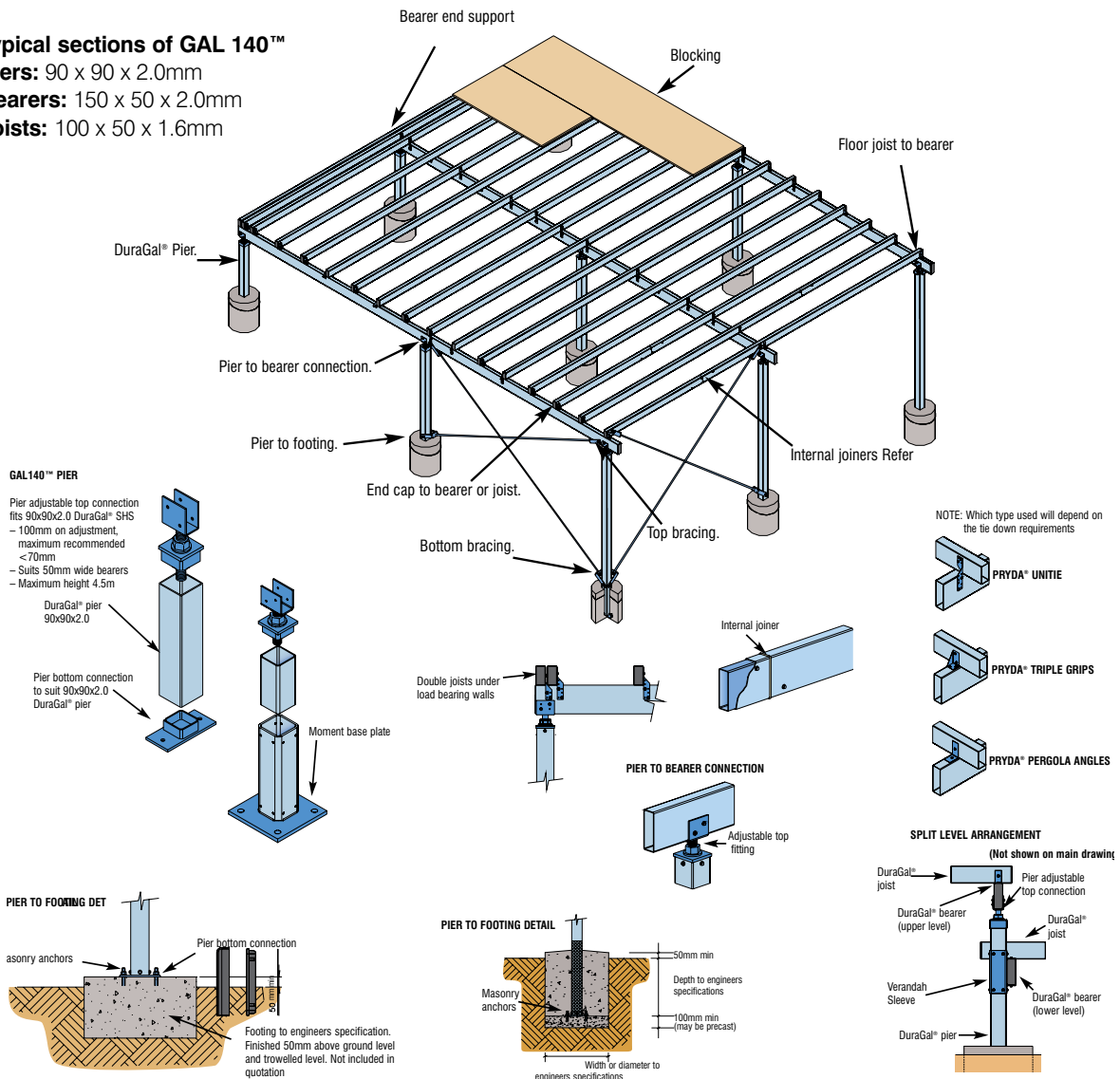
Spans

Joists are typically 100 x 50 x 1.6mm with continuous spans of 2800mm and bearers are typically 150 x 50 x 2.0mm with continuous spans of 3000mm. Other sizes may be specified with differing spans subject to the floor layout and site conditions. Your DuraGal Flooring System® distributor will be able to nominate the most economical sizes and layout upon receipt of the house plans.

Note: The DuraGal Flooring System® requires independent engineering certification to determine compliance of site specific conditions with statutory requirements.

Typical sections of GAL 140™

- Piers:** 90 x 90 x 2.0mm
- Bearers:** 150 x 50 x 2.0mm
- Joists:** 100 x 50 x 1.6mm



Note: For fasteners refer to page 89.



DuraGal® Mezzanine Flooring System

DURAGAL
FLOORING SYSTEM

The DuraGal® Mezzanine Flooring System offers:

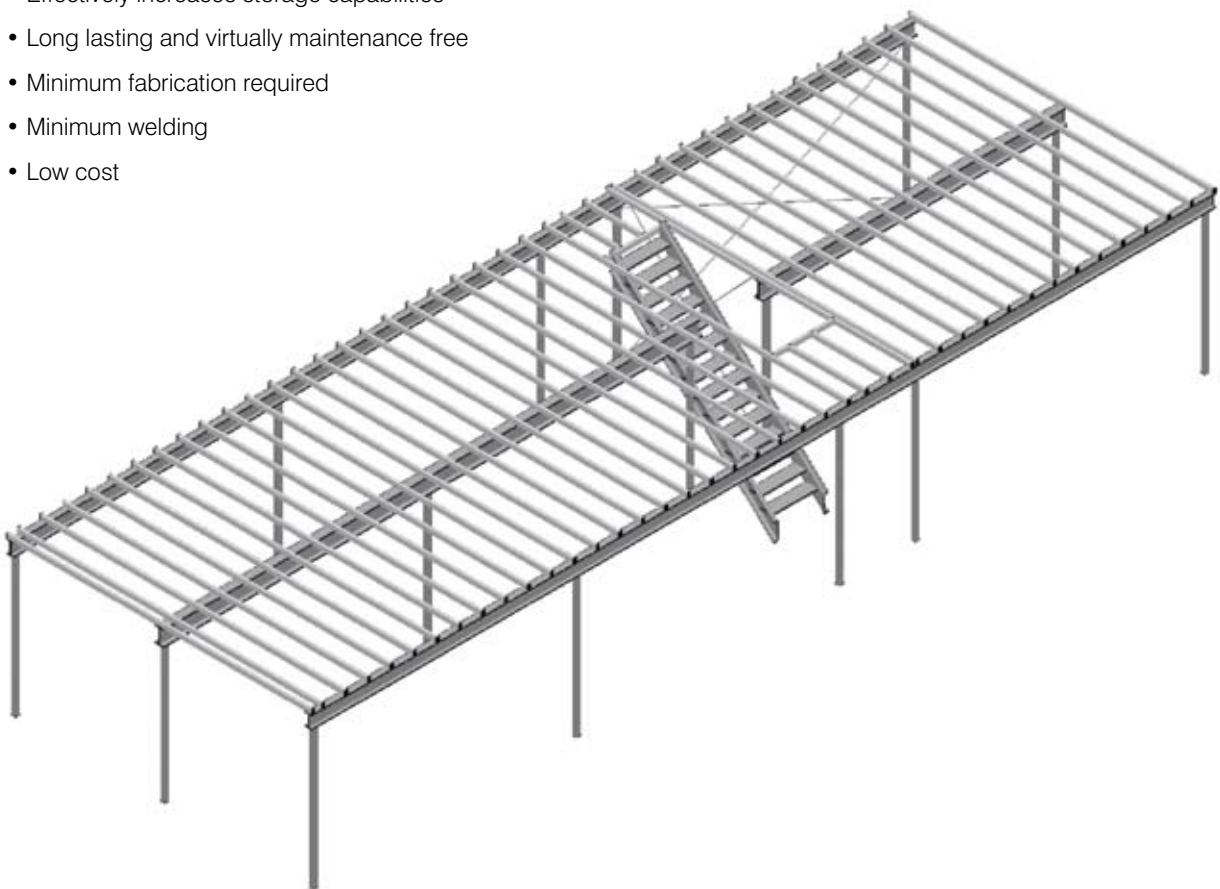
- A high strength, lightweight steel flooring system which can be used to increase the floor area of existing or new buildings.
- The system can also allow for the height of the columns to be adjusted, therefore compensating for any variations in the slab, with adjustment being available before or after installation.
- Columns, bearers and joists are all galvanised to be practically maintenance free.

The DuraGal® Mezzanine Flooring System uses high strength C450L0 grade galvanised GAL140™ and DuraGal® Hollow Sections. The sections are strong and lightweight making them easy and safe to handle on site. The DuraGal® Mezzanine Flooring System® is designed using a range of speciality fittings to allow safe and easy construction.

“Turn your unused space into storage, offices or work areas.”

The DuraGal® Mezzanine Flooring System

- A user friendly system that can save you time in construction, reducing the disruption to your business.
- On-site assembly without welding, only normal tools such as cut-off saws and Tek screw guns are required.
- High tensile strength and light weight sections allowing for a wider spacing of the bearers and, with the larger span distances between columns, under-floor areas are still usable with large open areas for uses such as workshops, office accommodation and storage areas etc.
- All connections are either screwed or nailed.
- Effectively increases storage capabilities
- Long lasting and virtually maintenance free
- Minimum fabrication required
- Minimum welding
- Low cost



Note: For fasteners refer to page 89.



Sliding Track & Joiners



Code	Description	Capacity kg	Gauge BMT	Length mm
EG2	Graduate	120	1.0	Custom*
ED2	Director	200	1.2	Custom*
EM1	Matador	450	1.5	Custom*
EH1	Hercules	650	1.6	Custom*
EDJB	Director	200	1.6	100
EHJB	Hercules	450-650	1.6	100

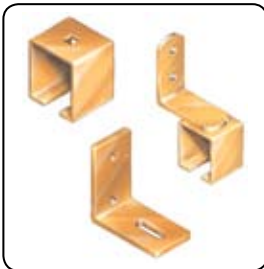
* All sliding door tracks are custom rolled to customer length requirement

Door Carriages



Code	Capacity kg	Wheels	Bearing
EG12	120	steel	needle
ED7LP	200	nylon	ball
ED12LP	200	steel	needle
ED14LP	200	nylon	ball
EH12LP	450	steel	needle
EH12ST	450	steel	needle
EH13LP	450	nylon	ball
EH14LP	450	nylon	ball
EH15ST	500	steel	needle
EH16ST	650	steel	ball

Support Brackets



Code	Capacity kg	Type
EG19	120	Bolt-on Overhead
ED19	200	Bolt-on Overhead
EH19	650	Bolt-on Overhead
ED20C	200	Offset Sidefix ¹
EH20C	650	Offset Sidefix ¹
EG23	120	Adjust Sidefix ²
ED23	200	Adjust Sidefix ²
EH23	650	Adjust Sidefix ²
ED120	200	Flush Sidefix ³
EH120	650	Flush Sidefix ³

¹ suits 35mm cladding profile

² used with EG19, ED19 or EH19

³ when used with ED19, EH 19

Door Guides



Code	Suits	Type	Material
EC FGP	All	Bolt-on	nylon

Purlins – C Sections



Purlins are made from high tensile steel to be fastened rather than welded.

Note: Purlins can be ordered pre-cut to length and with pre-punched holes or slots.

Designation	Size mm x mm x mm	Mass kg/m
C 10010	102 x 51 x 1.0	1.77
C 10012	102 x 51 x 1.2	2.10
C 10015	102 x 51 x 1.5	2.61
C 10019	102 x 51 x 1.9	3.29
C 15012	152 x 61 x 1.2	2.89
C 15015	152 x 61 x 1.5	3.58
C 15019	152 x 61 x 1.9	4.51
C 15024	152 x 63 x 2.4	5.67
C 20015	203 x 71 x 1.5	4.49
C 20019	203 x 73 x 1.9	5.73
C 20024	203 x 75 x 2.4	7.20
C 25024	254 x 73 x 1.9	6.50
C 25024	254 x 74 x 2.4	8.16
C 30024	300 x 101 x 3.0	10.1
C 30030	300 x 101 x 3.0	12.6
C 35030	350 x 126 x 3.0	15.1

Purlins – Z Sections

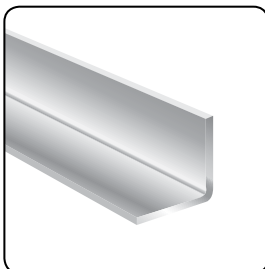


Purlins are made from high tensile steel to be fastened rather than welded.

Note: Purlins can be ordered pre-cut to length and with pre-punched holes or slots.

Designation	Size mm x mm x mm	Mass kg/m
Z 10010	102 x 53 x 1.0	1.77
Z 10012	102 x 53 x 1.2	2.10
Z 10015	102 x 53 x 1.5	2.61
Z 10019	102 x 53 x 1.9	3.29
Z 15012	152 x 66 x 1.2	2.89
Z 15015	152 x 66 x 1.5	3.58
Z 15019	152 x 66 x 1.9	4.51
Z 15024	152 x 70 x 2.4	5.67
Z 20015	203 x 77 x 1.5	4.49
Z 20019	203 x 80 x 1.9	5.73
Z 20024	203 x 82 x 2.4	7.20
Z 25019	254 x 79 x 2.4	6.50
Z 25024	254 x 79 x 2.4	8.16
Z 30024	300 x 105 x 2.4	10.1
Z 30030	300 x 107 x 3.0	12.6
Z 35030	350 x 134 x 3.0	15.1

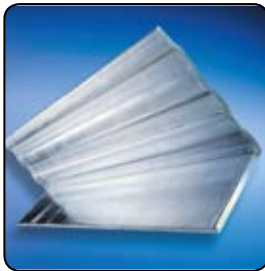
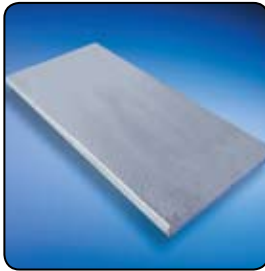
DuraGal Plus® Lintels – 12m



Size mm x mm x mm	Nominal Thickness mm	Mass kg/m	Pack Size (Lns)
100 x 100	6.0	8.92	16
	8.0	11.7	14
150 x 100	6.0	11.3	16
	8.0	14.9	12



Lintels – Flat / Angle



Max Clear Opening mm	Flat		Angle			
	85 x 8 Multi Rib	100 x 10 x 6 Multi Rib	100 x 100 x 6 Multi Rib	100 x 75 x 10 Traditional	150 x 90 x 10 Traditional	150 x 100 x 10 Traditional
up to 600mm	800					
600-700	900	900		900		
700-800	1000	1200				
800-900	1100	1200		1200		
900-1000	1200	1200		1200		
1000-1100		1500		1500		
1100-1200		1500		1500		
1200-1500		1800	1800	1800	1800	
1500-1800		2100	2100	2100	2100	2100
1800-2100		2400	2400	2400	2400	2400
2100-2400		2700	2700	2700	2700	2700
2400-2700			3000	3000	3000	3000
2700-3000			3300		3300	3300
3000-3300			3600		3600	3600
3300-3600			4000		4000	4000
4000-4200					4500	4500
4200-4500					5000	5000
4800-5100					5500	5500
5400-5700					6000	6000

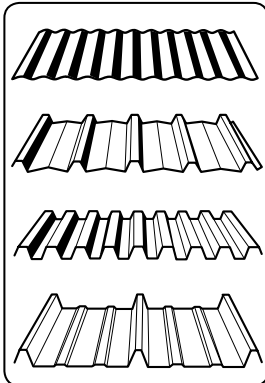
Lintels – Rendabar / T-Bar



Max Clear Opening mm	Rendabar			T-Bar			
	100 x 100 x 8 Rendabar	100 x 10 x 6 Rendabar	200 x 200 x 7 Multi Rib	200 x 200 x 9 Multi Rib	200 x 200 x 10 Traditional	250/10 x 200/10 Traditional	250/12 x 200/10 Traditional
up to 600	800						
600-700	900		900				
700-800	1000		1200				
800-900	1100		1200				
900-1000	1200		1200				
1000-1100	1200		1500				
1100-1200	1500		1500				
1200-1500	1500	1800	1800				
1500-1800	1800	2100	2100				
1800-2100	2100	2400	2400				
2100-2400	2400	2700	2700		2700	2800	
2400-2700		3000	3000		3000		
2700-3000		3300	3300		3300		
3000-3300		3600	3600	3600			
3300-3600		4000	3900	3900			
3600-4000				4200			
4000-4200				4500			
4200-4500				4800			
4500-4800				5100		5200	5200
4800-5100				5400		5400	5400
5100-5400				5700		5600	
5400-5700				6000		6000	6000
5700-6000				6300		6300	



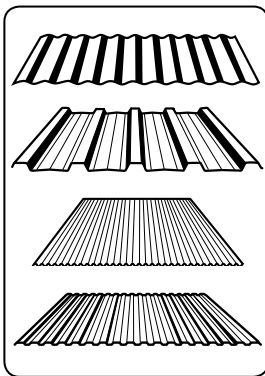
Roofing



Description	BMT Base Metal Thickness mm	T.C.T. Total Coated Thickness mm	Width of coverage mm
Custom Orb/Corrugated	0.42	0.47	762
	0.48	0.53	762
Trimdek Hi-Ten/Monoclad	0.42	0.47	762
	0.48	0.53	762
Spandek Hi-Ten/LongSpan/ Trimwall/Monoclad	0.42	0.47	700
	0.48	0.53	700
Klip-Lok Hi-Ten	0.42	0.47	406
	0.48	0.53	406
	0.60	0.60	406

Note: Available in Zinalume® and Colorbond®. For fasteners refer to page 89.

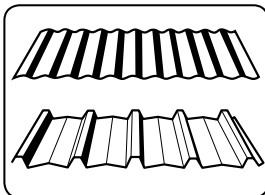
Wall Cladding



Description	BMT Base Metal Thickness mm	T.C.T. Total Coated Thickness mm	Width of coverage mm
Wall Clad/Corrugated	0.35	0.40	762
Trimwall/Monoclad	0.35	0.47	762
Mini Orb (Zinalume & Surfsmist® only)	0.42	0.47	820
Panelrib (Zinalume & Surfsmist® only)	0.42	0.47	850

Note: Available in Zinalume® and Colorbond®. For fasteners refer to page 89.

Translucent Sheeting

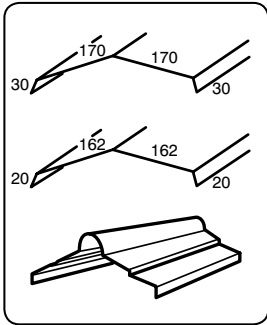


Description
Custom Orb Profile
Trimdek Profile

Note: Available in Fibreglass and Solasafe Polycarbonate. For fasteners refer to page 89.



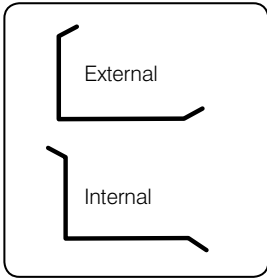
Flashings – Ridgcap



Description	Stock lengths mm
Ridge Capping RC1	1800
	2400
Ridge Capping RC2	1800
	2400
Ridge Roll Top RC3	1800
	2400

Note: Stock lengths and custom cut. Available in Zinalume® and Colorbond®. For fasteners refer to page 89.

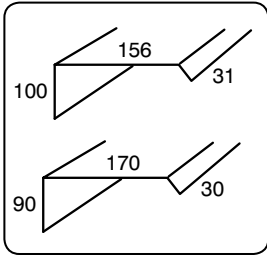
Flashings – Barge Mould/Corner Mould



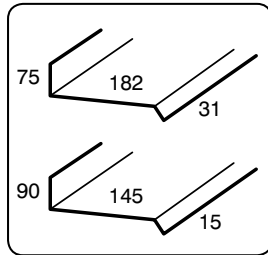
Size mm	Stock lengths mm
External – 75 x 75	1800 & 2400
External – 100 x 100	1800 & 2400
Internal – 150 x 100	1800 & 2400
Internal – 150 x 150	1800 & 2400

Note: Stock lengths and custom cut. Available in Zinalume® and Colorbond®. For fasteners refer to page 89.

Flashings – Barge Capping/Parapet



Barge Capping



Parapet Flashing

Description	Profile	Stock lengths mm
Barge Capping	Spandek Hi-Ten	1800 & 2400
	Custom Orb	1800 & 2400
	Trimdek Hi-Ten	1800 & 2400
Parapet Flashing	Spandek Hi-Ten	1800 & 2400
	Custom Orb	1800 & 2400
	Trimdek Hi-Ten	1800 & 2400

Note: Stock lengths and custom cut. Available in Zinalume® and Colorbond®. For fasteners refer to page 89.

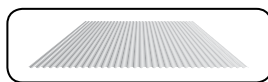
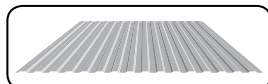
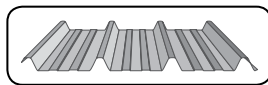
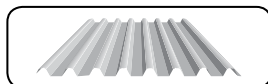
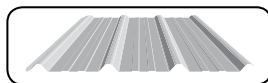
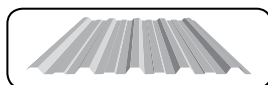
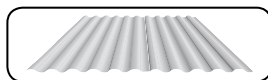
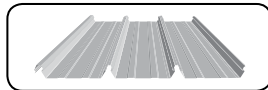


Roofing, Walling and Rainwater products...

When it comes to building a house, shed or just about anything, Metaland's wide range of corrugated sheet, purlins, battens, guttering and flashings has it covered. Drop in and ask us today. **No Dramas!**

Call into your nearest branch or visit www.metaland.com.au

Roofing & Walling Products



Description	State Availability	BMT mm	Width of coverage mm	Roof Spans Internal/end mm	Wall Spans Internal/end mm
Stramit Speed Deck Ultra®	Vic,Tas,Qld, SA,WA,NSW	0.42	700	2100/1750	3000/2500
	Vic,Tas,Qld, SA,WA,NSW	0.48	700	2700/2250	3000/2500
Stramit® Corrugated	National	0.42	762	1200/1000	2650/2200
	National	0.48	762	1600/1300	2850/2350
Stramit® Corrugated Curving (Bullnose)	National	0.60	762	1200/1000	3000/2500
Stramit Monoclad®	National	0.35	762	-	2350/1900
	National	0.42	762	1700/1400	3000/2500
	National	0.48	762	2300/1900	3000/2500
Stramit Megaclad®	NSW,Vic,Tas	0.42	800	1500/1250	2400/2000
	NSW,Vic,Tas	0.48	800	1800/1500	2600/2150
Stramit Longspan®	National	0.42	700	2100/1750	3000/2500
	National	0.48	700	2700/2250	3000/2500
Stramit Capacity Plus®	Qld	0.42	815	1800/1500	2250/1850
	Qld	0.48	815	2100/1750	2900/2400
Stramit Minirib®	Vic,Tas,Qld, SA,WA,NSW	0.42	900	-	1200/1000
Stramit Mini Corry®	Vic,Tas,Qld, SA,WA,NSW	0.42	825	-	1200/1000
	Vic,Tas,Qld, SA,WA,NSW	0.48	825	-	1300/1050

Note: Roof and Wall spans are for region A (sheltered suburban areas). For fasteners refer to page 89.

Colorbond® Steel colour range

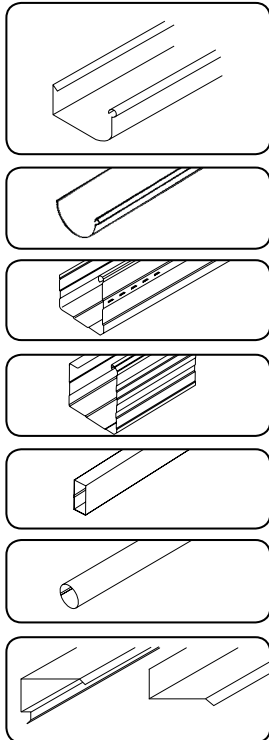


The printed steel colours shown here have been reproduced to represent actual colours as accurately as possible. However we recommend checking your chosen colour against an actual product sample before purchasing as varying light conditions and print limitations affect colour tones.

® Registered trademark of Stramit Corporation Pty Limited trading as Stramit Building Products ABN 57 005 010 195.
A Member of the Fletcher Building Group. COLORBOND® and ™ are trade marks of BlueScope Steel Limited.



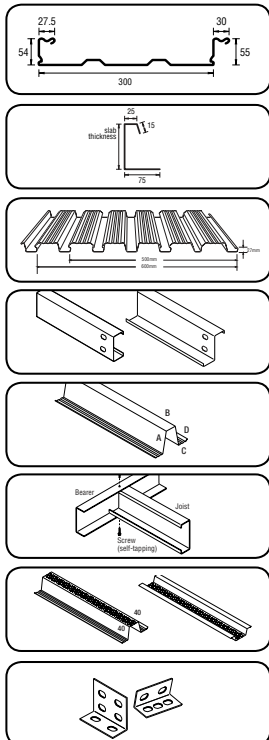
Rainwater Products



Description	Dimensions mm
Stramit® Quad Gutter	Various sizes
Stramit® Half Round Gutter	Various sizes
Stramit® M Pattern Gutter	85 x 123 x 140 front (QLD, NSW only)
Stramit® Fascia Gutter	25 x 90 x 127, 140 front (VIC, TAS only)
Stramit® Downpipe Rectangular	100 x 50, 100 x 75, 100 x 100, 100 x 150
Stramit® Downpipe Round	Diameter: 50, 65, 75, 90, 100
Stramit® Flashings	

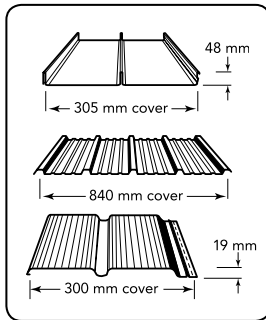
Note: For fasteners refer to page 89.

Structural Products



Description	Dimensions
Stramit Condeck HP®	0.75 & 1.00 BMT, 300mm Cover 55mm Rib Height
Stramit® Edgeforma	
Stramit PrimeForm™	0.60 & 0.75 BMT (VIC only)
Stramit® C & Z Purlins	
Stramit® Top Hats	64 x 34 x 20 x 6, 96 x 34 x 20 x 6, 120 x 42 x 27 x 10 (A x B x C x D)
Stramit® Flooring	
Stramit® Roof Batten Stramit® Ceiling Batten	40 x 40 x 15 x 6.0m & 7.5m Length 6.1m
Brackets & Angle Connectors	

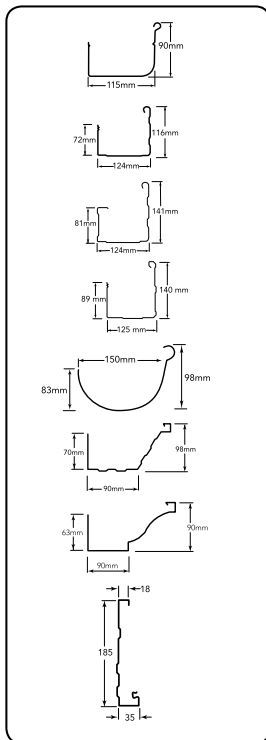
Roofing & Walling



Description	Application	BMT Base Metal Thickness mm	Width of coverage mm
Longline 305	Roofing	0.7	305
Multiclad	Walling	0.42	840
Easyclad	Walling	0.42	300

Note: For fasteners refer to page 89.

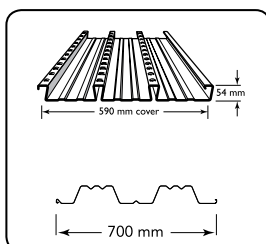
Gutters and Fascia



Product	Availability	Dimensions (mm)		
		A	B	C
Quad 115 Hi Front	QLD, SA, NSW, VIC, TAS	62	90	115
Trimline	QLD, Nth NSW, VIC, TAS	72	116	124
Sheerline	except QLD	81	141	124
Emline	QLD	89	125	140
Half Round	except NT		150	
Ranceline	WA	70	90	98
Colonial	WA	63	90	90
Novaline	QLD, SA, NSW, VIC, TAS, WA	18	185	35

Note: For fasteners refer to page 89.

Structural Decking

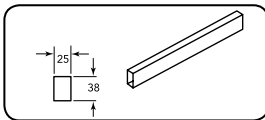
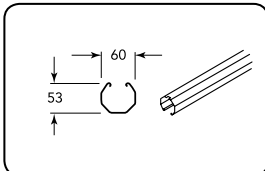
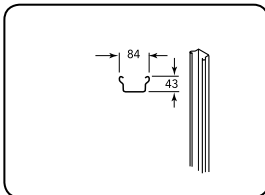
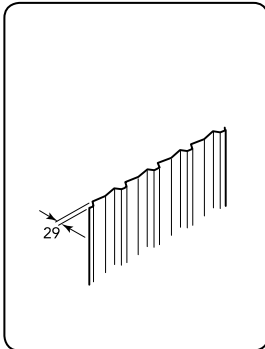


Description	BMT Base Metal Thickness mm	Mass kg/m ²	Width of coverage mm
Bondek	0.6	8.52	590
	0.7	10.5	590
	1	13.79	590
W-Dek	0.75	8.85	700
	1	11.63	700
	1.2	13.85	700

Note: Fasteners, see page 89.



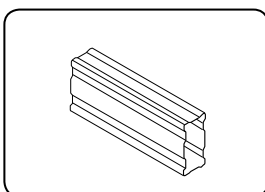
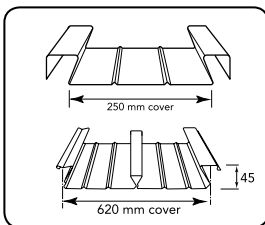
Fencing



Note: Miniscreen not available in SA. Customscreen available in QLD and SA only. For fasteners refer to page 89.

Neetascreen		Smartascreen		Miniscreen		Customscreen	
Dimension	Qty	Dimension	Qty	Dimension	Qty	Dimension	Qty
Infill Sheet							
Height mm	3	Height mm	3	Height mm	3	Height mm	3
1190 (non std)		1190 (non std)		1190 (non std)		1190 (non std)	
1490		1490		1490		1490	
1790		1790		1790		1790	
2090		2090		2090		2090	
Non-standard		Non-standard		Non-standard		Non-standard	
Post							
Height mm	2	Height mm	2	Height mm	2	Height mm	2
2100		2100		2100		2100	
2400		2400		2400		2400	
2700		2700		2700		2700	
3000		3000		3000		3000	
Rails							
Universal Rail	2	Universal Rail	2	Miniscreen Rail	2	Customscreen Rail	2
Length mm		Length mm		Length mm		Length mm	
2350		2350		2350		2370	
3100 (raked panels only)		3100 (raked panels only)		3100 (raked panels only)		3100 (raked panels only)	
Miniscreen Centre Rail							
				Length mm			
				2350			
				3100 (raked panels only)			
Fasteners							
Metal Tek Hex Head 10-16 x 16 (no neo)	17	Metal Tek Hex Head 10-16 x 16 (no neo)	17	Metal Tek Hex Head 10-16 x 16 (no neo)	17	Metal Tek Hex Head 10-16 x 16 (no neo)	17
				Ripple Tek 10 x 16-20	7		
Post Cap							
	1		1		1		1

Home Improvements



Description	BMT Base Metal Thickness mm	Total Coated Thickness mm	Width of coverage mm
Flatdek	0.42	0.47	250
Flatdek II (Qld only)	0.42	0.47	620

Description	Size	Dimensions (h x w)	Total Coated Thickness mm	Width of coverage mm
Firmlok beams	100 x 1.1	100 x 47	0.55	4000, 5000, 6100 & 9000*
	150 x 1.5	150 x 47	0.75	4000, 5000, 6100 & 9000*
	200 x 2.0	200 x 47		4000, 5000, 6100 & 9000*

Note: *Custom Cut Lengths Available – Max. length 9000mm, Min. length 1200mm. For fasteners refer to page 89.

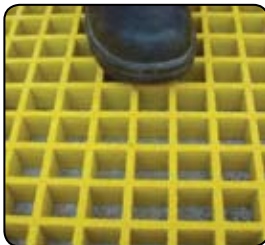


Walkway Systems



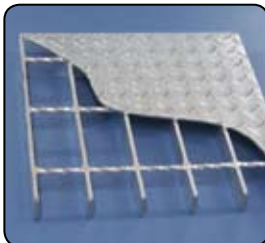
Metaland can supply walkway systems as either fully prefabricated custom panels or as standard components. Grating, handrail and components are available in mild steel, aluminium, stainless steel, or corrosion/chemical resistant fibreglass reinforced plastic (FRP). Stanchion and handrail products are available in a range of mounting configurations to suit mounting for: platform, stairway, side mount, side offset, conveyor, cored, weld-on, or bolt-on style.

FRP Grating



Webforge FRP grating is composed of 65% resin and 35% continuous glass fibres, available in stock panels 3660 x 1220 with 6 mm load bar configurations 38 x 38 x 25 (deep), 38 x 38 x 38 (deep) in green or yellow, and a grey "Mini-mesh" 19 x 19 x 38 (deep). The high resin content makes FRP resistant to a wide range of corrosive chemicals, gases and fumes. Other properties that make FRP a valuable choice in dangerous work areas are its fire retardant, non-sparking, and non-conductive properties. FRP is simple to cut and assemble on site with standard tools. Ancillary items recommended for site assembly are stainless steel mounting brackets, and sealing kits to seal cut edges.

Webplate/Webmesh



Webplate (shown) is a composite flooring comprising floorplate welded to the top of grating, and is available in mild steel or aluminium. Another option is Webmesh, which is a composite comprising grating with a light gauge mesh welded to the underside to prevent tools or small objects from falling through the grating.

Expanded Walkway Mesh



Made from 5mm mild steel, Webforge walkway mesh is a strong, cost effective solution for high impact and load applications. 3000mm long panels are available in stock widths of 1200/900/750/600mm. 45mm SWM x 135mm LWM and 30mm SWM x 75mm LWM configurations available.

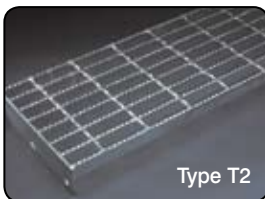


Balustrading



Webforge Balustrading is a functional, low maintenance cost effective fencing solution for commercial and industrial applications

Stair Treads



Type T2



FRP

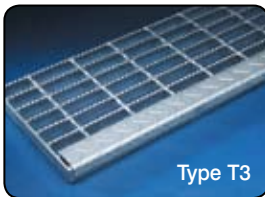
Stair treads are made to measure from mild steel, aluminium, stainless steel, or FRP with options of non slip nosing. Suitable for either bolt-on or weld-on attachment.

Type T2: Mild steel bolted fixing

Type T3: Mild steel with floor plate nosing, welded fixing

Type T5: Aluminium with abrasive nosing, welded fixing

FRP: FRP tread with abrasive nosing, bolted fixing



Type T3



Type T5



Drainage Grates



Webforge offers a range of standard (stock) and custom made mild steel drainage and trench grates that comply with AS3996.

Grates are rated to:

Class A: Extra light duty – suit pedestrian/cyclists

Class B: Light duty – suit light vehicles/tractors, livestock

Class C: Medium duty – suit malls and pedestrian areas open to slow moving commercial vehicles

Class D: Heavy Duty – suit roads and areas open to commercial vehicles



Fasteners and screws for every application...

Whether it's holding down a roof, putting up a wall or building a fence, Metaland's wide range of fasteners for timber and steel will fix you up. **No Dramas!**

Call into your nearest branch or visit www.metaland.com.au



Mesh – HANDIMESH® Sheet – Galvanized



Product Code	Length (m)	Width (m)	Line Wire (mm)	Cross Wires (mm)	Mass (kg)
G112A	3	2.4	2.5 @ 25	2.5 @ 25	23
G122A	3	2.4	2.5 @ 25	2.5 @ 50	17
G113	3	2.4	3.15 @ 25	3.15 @ 25	36
G123	3	2.4	3.15 @ 25	3.15 @ 50	27
G223	3	2.4	3.15 @ 50	3.15 @ 50	18
G234	3	2.4	4 @ 50	4 @ 75	24
G235	3	2.4	5 @ 50	5 @ 75	38
G224	3	2.4	4 @ 50	4 @ 50	29
G225	3	2.4	5 @ 50	5 @ 50	44
G445	3	2.4	5 @ 100	5 @ 100	23
G445A	3	2.4	5.6 @ 100	5.6 @ 100	29
G112AHS	2	1.2	2.3 @ 25	2.3 @ 25	8
G122AHS	2	1.2	2.3 @ 25	2.3 @ 50	6
G234HS	2	1.2	3.5 @ 50	3.5 @ 75	8
G224HS	2	1.2	3.5 @ 50	3.5 @ 50	10
G444HS	2	1.2	4 @ 100	4 @ 100	5

Features:

- Also available in 'bright wire' on request.

Typical uses:

- General Purpose Applications
- DIY & Home Improvement

Mesh – Ribbed UTEMESH® AS/NZS 4671 – Class L



Product Code	Std Unit	Longitudinal Wires	Cross Wires	Mass (kg)	Dimensions (m)
SL62UTE	Sheet	11 x 6 @ 200	20 x 6 @ 200	18	4 x 2
SL72UTE	Sheet	11 x 6.75 @ 200	20 x 6.75 @ 200	23	4 x 2
SL82UTE	Sheet	11 x 7.6 @ 200	20 x 7.6 @ 200	30	4 x 2

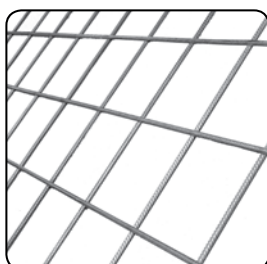
Features:

- Versatile and lightweight
- Minimises wastage
- Can be handled by one person (using the correct handling techniques)
- Safe and legal to transport
- Easy to setup, place and tie

Typical uses:

- Residential Construction
- Driveways and paths
- Shed slabs
- Smaller concreting jobs

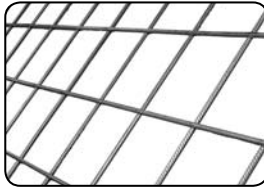
Mesh – Ribbed Square Mesh AS/NZS 4671 – Class L



Product Code	Std Unit	Longitudinal Wires	Cross Wires	Mass (kg)	Dimensions (m)
SL52	Sheet	10 x 4.77 @ 200 +4 x 4 @ 100	30 x 4.77 @ 200	21	6 x 2.4
SL62	Sheet	10 x 6 @ 200 +4 x 4.24 @ 100	30 x 6 @ 200	33	6 x 2.4
SL72	Sheet	10 x 6.75 @ 200 +4 x 4.77 @ 100	30 x 6.75 @ 200	41	6 x 2.4
SL81	Sheet	25 x 7.6 @ 100	60 x 7.6 @ 100	105	6 x 2.4
SL82	Sheet	10 x 7.6 @ 200 +4 x 5.37 @ 100	30 x 7.6 @ 200	52	6 x 2.4
SL92	Sheet	10 x 8.6 @ 200 +4 x 6 @ 100	30 x 8.6 @ 200	66	6 x 2.4
SL102	Sheet	10 x 9.5 @ 200 +4 x 6.75 @ 100	30 x 9.5 @ 200	80	6 x 2.4



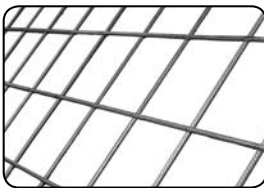
Mesh – Square Mesh 300 x 300 Spacing – Class L



Product Code	Std Unit	Longitudinal Wires	Cross Wires	Mass (kg)	Dimensions (m)
SL53	Sheet	6 x 5 @ 300	20 x 5 @ 300	14	6 x 2.4
SL63	Sheet	6 x 6 @ 300	20 x 6 @ 300	21	6 x 2.4

Note: Only available in WA

Mesh – Plain Square Mesh – Sheet – Class L



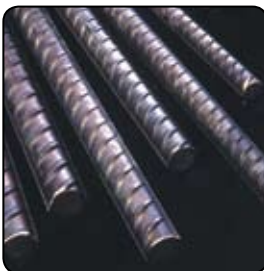
Product Code	Std Unit	Longitudinal Wires	Cross Wires	Mass (kg)	Dimensions (m)
F41	Sheet	25 x 4 @ 100	61 x 4 @ 100	29	6 x 2.4
F51	Sheet	25 x 5 @ 100	61 x 5 @ 100	45	6 x 2.4

Mesh – Trench AS/NZS 4671 – Class L Size 8, 11 & 12



Product Code	Std Unit	Longitudinal Wires	Mass (kg)	Dimensions (m)
L8TM200	Sheet	3 x 7.6 @ 100	6.8	6 x 0.2
L8TM300	Sheet	4 x 7.6 @ 100	9.2	6 x 0.3
L8TM400	Sheet	5 x 7.6 @ 100	11.6	6 x 0.4
L8TM500	Sheet	6 x 7.6 @ 100	13.9	6 x 0.5
L11TM200	Sheet	3 x 10.7 @ 100	13.3	6 x 0.2
L11TM300	Sheet	4 x 10.7 @ 100	17.7	6 x 0.3
L11TM400	Sheet	5 x 10.7 @ 100	22.3	6 x 0.4
L11TM500	Sheet	6 x 10.7 @ 100	26.8	6 x 0.5
L12TM200	Sheet	3 x 11.9 @ 100	13.3	6 x 0.2
L12TM300	Sheet	4 x 11.9 @ 100	17.7	6 x 0.3
L12TM400	Sheet	5 x 11.9 @ 100	22.3	6 x 0.4
L12TM500	Sheet	6 x 11.9 @ 100	26.8	6 x 0.5

Deformed Bar



Diameter mm	Mass kg/m	Metres per Tonne
10	0.63	1582
12	0.91	1099
16	1.62	617
20	2.53	395
24	3.64	275
28	4.95	202
32	6.47	155
36	8.91	122
40	10.11	99

Features:

- ACRS quality certified products manufactured from Australian steel

Typical uses:

- Commercial Construction
- Housing Construction
- Civil Construction



Fabricated Fencing



Description	Finish	Size cm	Length m
Netting – Heavy	Galvanized	30 x 4 x 1.4	100
	Galvanized	90 x 4 x 1.4	50
	Galvanized	90 x 4 x 1.4	100
	Galvanized	105 x 4 x 1.4	50
	Galvanized	105 x 4 x 1.4	100
Netting – Light	Galvanized	90 x 5 x 1.0	50
	Galvanized	180 x 5 x 1.0	50
Hinged Joint – 2.5mm	Galvanized	6/70/30	200
	Galvanized	6/90/30	200
	Galvanized	7/90/30	200
	Galvanized	8/90/30	200
	Galvanized	8/115/30	200
	Galvanized	8/80/15	100
	Galvanized	8/90/15	100
	Galvanized	8/115/15	100
	Galvanized	11/142/15	100
Ring Joint – 2.5mm	Galvanized	5/70/30	200
	Galvanized	6/70/30	200
	Galvanized	6/90/30	200
	Galvanized	7/90/30	200
	Galvanized	5/70/90	500

Wires – Fence Wire



Description	Finish	Size mm	Length m
Whites Premium Gold – MT	Standard Galvanized	2.50	1500
– HT	Standard Galvanized	2.50	1500
– MT	Heavy Galvanized	2.50	1500
– HT	Heavy Galvanized	2.50	1500
– Soft	Standard Galvanized	3.15	750
– Soft	Standard Galvanized	4.00	500
	PVC Horsesighter	5.20	400
Whites Wires – MT	Standard Galvanized	2.50	1500
– HT	Standard Galvanized	2.50	1500
– Soft	Standard Galvanized	3.15	750
– Soft	Standard Galvanized	4.00	500
Handyfence – MT	Standard Galvanized	2.50	300
– Soft	Standard Galvanized	3.00	250

Wires – Barbed Wire



Description	Finish	Size mm	Length m
Whites Premium Gold – HT	Heavy Galvanized	1.8	500
– HT	Heavy Galvanized	1.57	500
– IOWA	Standard Galvanized	2.5	400

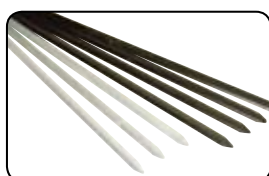


Wires – Tie Wire



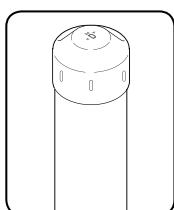
Diameter mm	Finish	Length m
1.25	Galvanized	95
1.57	Galvanized	60
1.57	Galvanized	180
2.00	Galvanized	40
2.00	Galvanized	120
2.50	Galvanized	24
3.15	Galvanized	48

Posts

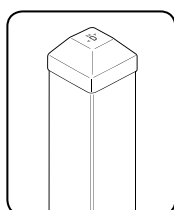


Description	Finish	Size cm
Heavy Post	Black	135, 150, 165, 180, 210, 240
	Hot Dipped Galvanized	135, 150, 165, 180, 240
Ultra Post	Black	45, 60, 90, 135, 150, 165, 180, 240
	Hot Dipped Galvanized	135, 150, 165, 180, 240

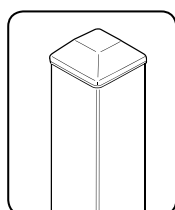
Post caps



Round Post Cap



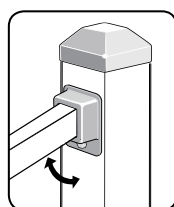
Square Post Cap



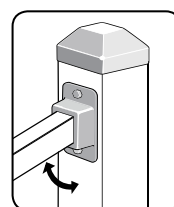
Square Post Cap – Poly

Description	Finish	Fit Pipe Size mm
Round Post Caps	Galvabond®	25, 32, 40, 50, 80, 100, 125, 150
Square Tube Caps	Galvabond®	50, 65, 75, 90, 100
Square Tube Caps	Polypropylene	50, 65

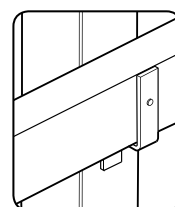
Brackets, Clips & Flanges



Rail – Single Lug



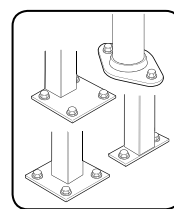
Rail – Double Lug



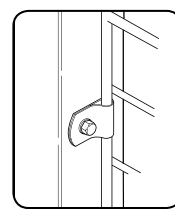
Rail – Holder Bracket



Fence Brackets



Brackets & Flanges



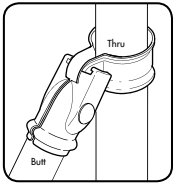
Fence Panel “U” Clip

Description	Finish	Size mm
Rail – Single Lug	Zinc Plated	38 x 25
Rail – Double Lug	Zinc Plated	40 x 40
Rail Holder Bracket	Galvanized	Suit 75 x 53 Timber Rail
Fence Brackets	Aluminium	38 x 25
Post Brackets Square Base	Galvanized	50 x 50 x 1.6
Oval Flanges	Galvanized	Suit pipes 32NB, 50NB
Fence Panel “U” Clip	Galvanized	25

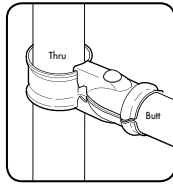


Universal Fence Fitting System

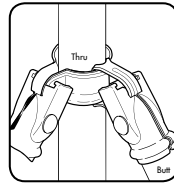
Downee®



Rail Clamp



Post Clamp



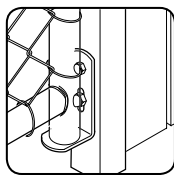
Multi-Purpose Connector

Description	Finish	Size mm
Rail Clamps	Galvanised	25, 32, 40, 50
Post Clamps	Galvanised	25, 32, 40, 50, 65, 80, 100
Multi Purpose Connector	Galvanised	

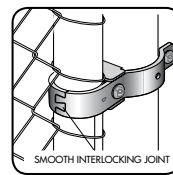
Note: All rail and post clamps are interchangeable with each other.

Hinges & Gudgeons

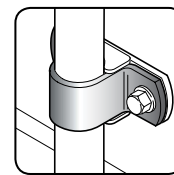
Downee®



Long Plate Gudgeon



Two Part Hinges

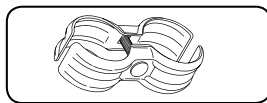


Pipe Hinge Strap

Description	Finish	Fit Pipe Size mm
Long Plate Gudgeon	Galvanized	20NB, 25NB
Two Part Hinges	Galvanized	Post – 50NB, 80NB Gate – 25NB
Pipe Hinge Strap	Galvanized	25NB

Temporary Fence Clamps

Downee®

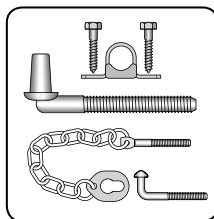


Fit Pipe Size mm

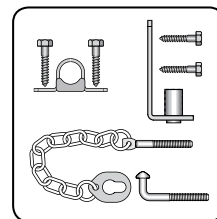
32 x 32, 40 x 40, 50 x 50

Farm Gate Packs

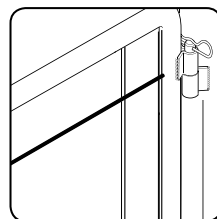
Downee®



FGP3



FGP15



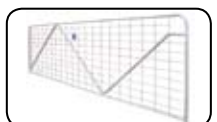
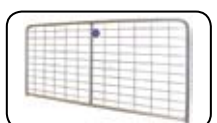
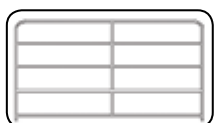
Description

FGP3 – Ring Chain Catches, Screw In with gudgeons and clamps (Galvanized)

FGP15 – Ring Chain Catches, Screw In with gudgeons and clamps (Galvanized)

Socket & Pin

Gates



Description	Finish	Height mm	Sizes mm
Five-Bar Gates	Galvanized	1150	1000,1200,1500,1800, 2400,3000,3600,4200,4800
Mesh "I" Stay Gates	Galvanized	1150	830,1000,1200,1500, 1800,2400,3000,3600
Mesh "II" Stay Gates	Galvanized	1150	4200,4800
Mesh "N" Stay Gates	Galvanized	1150	2400,3000,3600,4200,4800



Welding – Magswitch Magsquare



Description	Size mm	Tensile Breakaway kg
Magswitch Magsquare	30	65
Magswitch Magsquare	50	270
Magswitch Magsquare	70	500

- Holds metal on multiple planes for welding ease
- Attaches to flat and round surfaces
- Machined for precise 90-degree angles
- Includes pre-tapped holes on all sides to mount accessories, jigs and tools
- Magnet turns completely off for removal of all debris for cleaning

Welding – Magswitch Boomer Angle



Description	Size mm	Tensile Breakaway kg
Magswitch Boomer Angle	30	65
Magswitch Boomer Angle	50	270

- The most versatile magnetic square ever! Virtually every angle possible... fast and easy.
- Each Magsquare pivots to any desired angle
- Fast, easy on/off magnet control
- Holds flat on flat or round surfaces
- Magnet turns completely off for removal of all debris for cleaning

Welding – Magswitch Welding Clamp



Description	Amp
Magswitch Welding Clamp	200
Magswitch Welding Clamp	300
Magswitch Welding Clamp	600

- No more searching for a ground location
- Grounds instantly
- Turn on Magswitch and start welding
- Reusable - saves welders time and money
- Quick and easy connect and disconnect
- Easily attaches to flat or round surfaces
- No more tacking on tabs in large sheet-weld or pipe jobs

Welding – Magswitch Hanging Hooks



Description	Size mm	Tensile Breakaway kg
Magswitch Power Hook	30	10kg Pry-Breakaway
Magswitch Gorilla Hook	50	18kg Pry-Breakaway

Mag Hooks are perfect for temporary holding of lines, hoses, lights, tools, or loose nuts and bolts. A versatile universal tool for quick connect-disconnect hanger. Ideal for use around the job site or shop.



Welding – Lincoln Welder Range



Model	Rated Output Duty Cycle
REDI-MIG Plus 215C	220A/25V @ 15%, 100A/19V @ 100%
REDI-MIG Plus 255C & 255S	255A/26.8V @ 20%, 120A/20V @ 100%
POWERPLUS 350S	350A/31.5V @ 60%, 270A/27.5V @ 100%

Outstanding arc control and very simple to set up and operate. Supplied fully assembled and "ready to Weld". Backed by the industry's best 3 year, all parts and labour warranty.

Recommended consumables: UltraMag™ or EasyMIG™ S6 copper coated steel MIG wire with argon or carbon dioxide shielding gas

Welding – Lincoln Handystick 130



Model	Rated Output Duty Cycle
Lincoln Handystick 130	5-130A @ 35%

Handy Stick™ 130 Inverter Stick Welder. European made, excellent arc characteristics. 2 year all parts and labour warranty. Supplied complete with cable set.

Recommended consumables: Easyarc 6013 General purpose all positional electrode. Suitable for mild steel, sheet metal and galvanise steels.

Welding – Lincoln PowerMig 180C



Model	Rated Output Duty Cycle
Lincoln PowerMig 180C	130A/20V @ 30%

Power MIG® 180C MIG Welder. Genuine industrial strength and simple to use. Supplied "ready to weld" with MIG gun, drive rolls, wire, regulator, cable set and wear parts. 2 year all parts and labour warranty.

Recommended consumables: EasyMIG™ S6 copper coated steel MIG wire with argon or carbon dioxide shielding gas; and Steelcore™ 71T GS self-shielded, flux cored wire for outdoor or portable use

Welding – Lincoln Welding Safety Apparel



Description
Powercraft™ Electronic Welding Helmet
"Blue Kevlar" 390mm Gauntlets, Premium Grade Leather with Kevlar® stitching
Welding Jackets, Premium Grade Leather with Kevlar® stitching
Modular Welding Screens, 1.8m x 1.8m, resistant to UV rays, flames and abrasion

Welding



Welding – Electrodes



Description	Wire size mm
AUSTARC 13S Mild Steel Electrodes 2.5kg pack	2.5
AUSTARC 12P Mild Steel Electrodes 2.5kg pack	2.5
AUSTARC 12P Mild Steel Electrodes 5.0kg pack	3.2
AUSTARC 16TC Low Hydrogen Electrodes	2.5
AUSTARC 16TC Low Hydrogen Electrodes	3.2
AUSTARC 13S Welding Electrodes 5.0kg pack	3.2

Welding – Wires



Description	Wire size mm
AUSTMIG ES6 Mild Steel MIG Wires 15KG SPL	1.20
AUSTMIG ES6 MIG Wire 15KG SPL	0.9
STEELMIG Wire 5KG	0.8
STEELMIG Wire 15KG	0.8
FABSHIELD 23 MIG Wire 4.5 KG SPL	0.9

Welding – Gloves



Description
Leather – Forearm length – 16 inch



Looking for galvanised pipe to bend and form?

Metaland's General Purpose Hot Dipped Galvanized pipe is 300g/m2 HDG coated that virtually eliminates flaking or cracking when bending and forming. **No Dramas!**

Call into your nearest branch or visit www.metaland.com.au



Power Tools – Drills



Description
Hammer Drill, 13mm
Cordless and many other models available

Power Tools – Grinders



Description
Angle Grinders - 100mm, 125mm & 230mm

Note: Grinder Blades, Cutting & Grinding Discs available - See page 86. Power Tools and accessories can be ordered if unavailable.

Power Tools – Drop Saw



Description
355mm Portable Cut-Off Saw, 260 Watts



Everything you need in steel when you need it!

Throughout our national network of stores, Metaland stocks and supplies tubular pipe and RHS, flats, rounds, angles, reobar, lintels and all the steel accessories products you require. **No Dramas!**

Call into your nearest branch or visit www.metaland.com.au



Cutting & Grinding



Ultra Thin Cutting (Inox)

Manufactured without addition of ferrous, sulphurous and chlorinated fillers. Suitable for cutting of metal, sheet profiles and solid materials. Suitable for use on Stainless Steel.

Available in sizes: 1.0mm Thickness: 100mm (4"), 115mm (4 1/2"), 125mm (5")
1.6mm & 1.9mm Thickness: 115mm (4 1/2"), 125mm (5"), 178mm (7"), 230mm (9")



General Purpose Cutting

General Purpose cut-off wheels providing fast cutting action and long service life on a range of materials. Ideal for use on steel, castings, difficult to machine and nonferrous metals.

Available in sizes: 100mm (4"), 115mm (4 1/2"), 125mm (5"), 178mm (7"), 230mm (9")



Chop Saw Wheel

Thinner chop saw wheels results in better cuts and reduced burr. Provides excellent cutting results on machines with up to 3kW output.

Available in sizes: 300mm (12"), 350mm (14"), 400mm (16")



General Purpose Grinding

Achieves particularly high stock removal rates even at low contact pressure. Suitable for surface grinding, work on weld seams, chamfering, deburring and fillet weld grinding.

Available in sizes: 100mm (4"), 115mm (4 1/2"), 125mm (5"), 178mm (7"), 230mm (9")



Polifan Flap Discs

PSF Type Zirconia. High stock removal and long product life.

Available in sizes: 100mm (4"), 115mm (4 1/2"), 125mm (5"), 180mm (7")

In Grits: 40, 60, 80, 120



Polifans Strong

Removes more material in less time than any grinding wheel or competitive flap disc on the market.

Available in sizes: 115mm (4 1/2") & 125mm (5").

In Grits: 36 & 50



Polifans Curve SG-Plus

Innovative radial shape to optimize fillet weld operations on steel and INOX workpieces. Designed to provide fast, aggressive grinding with a very high rate of material removal.

Available in sizes: 125mm (5"). Available in Medium (5mm) & Large (8mm)

In Grits: 40



Safety – Dust Masks & Ear Plugs



Description
Affinity P2 disposable Respirator – Box of 20
Ear Plugs Hi Lo Round Class 5 SLC80 27db – Box of 200 pairs

Safety – Face Shields, Goggles, Glasses



Description
Bullet Faceshield clear visor high velocity impact
FlexiTuff General Purpose Goggle Medium Impact lens
Safety Glasses - Premier, Medium Velocity Impact, lightweight, Clear / Smoke / Blue Mirror Anti-scratch Lens options

Note: Tinted eyewear is available.

All the tools and accessories you need are here at your Metaland Store!





Paints & Primers



Galmet Cold Galvanizing

An organic zinc-rich coating that provides long term protection to steel against rust and corrosion.

Sizes available: 400g aerosol, 250ml, 500ml, 1 litre and 4 litre.



Galmet DuraGal® Silver Paint

An anti-corrosive silver protection paint and touch-up coating for DuraGal®I welds and other iron and steel products giving the appearance of a new DuraGal® coated surface.

Sizes available: 350g aerosol, 1 litre, 4 litre and 20 litre.



Galmet Fence, Gutter & Fascia Touchup Paint

Fence, Gutter and Fascia touch up paint is flexible, extremely durable exterior acrylic designed for touching up spot repairs on metal surfaces.

Sizes available: 350g aerosol



Galmet Ironize

Ironize is a fast reacting rust converter and sealer which can be applied directly to rusty surfaces.

Sizes available: 125ml, 250ml, 500ml, 1 litre and 4 litre.



Galmet Keytite Etch Primer

Keytite Etch Primer is a single pack, epoxy etch primer designed to etch and passivate ferrous and nonferrous metals.

Sizes available: 350g aerosol, 500ml, 1 litre & 4 litre.



Galmet Keytite Steel Primer

Keytite Steel Primer is a slow drying, single pack alkyd primer designed to penetrate lightly rusted surfaces.

Sizes available: Grey: 350g aerosol, 500ml, 1 litre & 4 litre. Red: 350g aerosol only.



Galmet Rustpaint

Rustpaint is a single pack, high gloss epoxy modified enamel specifically formulated to protect and beautify both new and old surfaces.

Sizes available: 350g aerosol, 500ml, 1 litre & 4 litre.



Galmet Spraypaint

Galmet Spraypaint is a fast-dry, high gloss steel and structural enamel used as a general purpose industrial finishing coat.

Sizes available: 350g aerosol



Fasteners

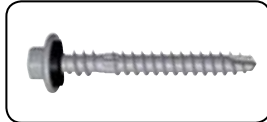
Buildex



Shed Tek[®]

14 x 22 - Fine thread. 14g screws with 5/16" head size to eliminate driver changes, generally used in shed construction with plates and cleats.

14 x 25 - Coarse thread. 14g screws with 5/16" head size to eliminate driver changes, generally used in shed construction with plates and cleats.



AutoTek[®]

M5.5 x 39 - Fixing corrugated roof sheet to steel purlins 1.9mm to 3.5mm.

M5.5 x 50 - Fixing square rib roof sheet to steel purlins 1.9mm to 3.5mm.



RippleTek

10 x 20 - Fixing mini corrugated and corrugated sheets to steel.

10 x 30 - Fixing mini corrugated and corrugated sheets to timber.



Series 500 SuperTEK[®]

12 x 32 - Wafer head for flush fit needs such as walkways. Drills 3mm-12.5mm hot rolled steel.

12 x 32, 12 x 50, 12 x 65 - Hex head with or without seal. Drills 3mm to 12.5mm hot rolled steel for roof and wall cladding, pipe and cable saddles, metal deck clips, brackets, signage and plumbing applications.



RoofZips

M6 x 25 - Fixing wall cladding, stitching & general fastening into both timber & steel up to 1.5mm.

M6 x 50 - Fixing corrugated roof sheet to timber, metal batten & steel purlin up to 1.5mm.

Also suits square profile sheet fixed to metal battens & steel purlins up to 1.5mm.

M6 x 65 - Fixing square profile roof sheet to timber battens.



Hi-Teks[®] - General Purpose Fasteners

10 x 16 - Used in fencing, steel house frames, DuraGal[®]

flooring systems, shed and wall cladding with seal.

12 x 20 - Used in fencing, steel house frames, sheds and wall cladding with seal.

14 x 22 - Used in DuraGal[®] flooring systems, sheds and heavier assembly.



BattenZips[®]

M5.5 x 40 - Fixing metal roof battens to either timber or steel rafters.



PolyZips[®]

M6.5 x 50 - Fixing corrugated polycarbonate sheet to timber, metal batten and steel purlin up to 1.5mm, also suits square profile fixed to metal battens and steel purlins up to 1.5mm.

M6.5 x 65 - Fixing square profile polycarbonate sheet to timber battens.



Wingteks[®]

6 x 50, 8 x 32, 10 x 40, 10 x 45, 10 x 55, 10 x 75, 14 x 65 - Countersunk ribbed head for applications where timber is fastened to steel, gates, fences, decking but not recommended for treated timber decks to steel.



Bugle Batten

14 x 50, 14 x 75, 14 x 100 - Countersunk head for fixing timber battens to rafters, fastening heavy timbers, fencing, boardwalks, pergolas, plates and hinges to timber.



Fibreglass Tek[®]

M6.5 x 65, M6.5 x 85 - 32mm weatherlok fixing fibreglass sheet to steel up to 3mm, drills the expansion hole during installation.



Geometry & Mensuration

Shape	Area or Volume	Formulae	Results – Area or Volume
Rectangles	Area	Multiply length by width	$A (m) \times B (m) = \text{Square metres}$
Squares	Area	Multiply length by width	$A (m) \times B (m) = \text{Square metres}$
Cubes	Volume	Length x Width x Height	$A (m) \times B (m) \times H (m) = \text{Cubic metres}$
Circles	Circumference	Multiply diameter by Pi (or 3.142858)	$D (m) \times \text{Pi} = \text{metres}$
Circles	Area	$\text{Pi} \times \text{Radius} \times \text{Radius}$ [or R^2]	$(R^2) \times \text{Pi} = \text{Square metres}$
Sector of a circle	Area	Length of Arc x Half Radius	$A (m) \times R/2 = \text{Square metres}$
Triangles	Area	Base/2 x Height	$B/2 (m) \times H = \text{Square metres}$
Ellipse	Area	Long axis x Short axis x 0.7854	$D1 (m) \times D2 (m) \times 0.7854 = \text{Square metres}$
Ellipse	Volume	Long axis x Short axis x 0.7854 x Length	$D1 (m) \times D2 (m) \times 0.7854 = \text{Square metres}$
Cylinder	Area	Circumference of base x Height	$D (m) \times \text{Pi} \times H (m) = \text{Square metres}$
Cylinder	Volume	Area of base x Height	$(R^2) \times \text{Pi} \times H (m) = \text{Cubic metres}$
Sphere	Area	Diameter x Diameter x Pi	$D (m) \times D (m) \times \text{Pi} = \text{Cubic metres}$
Sphere	Volume	Diameter x Diameter x Diameter x 0.5236	$D (m) \times D (m) \times D (m) \times 0.5236 = \text{Cubic metres}$
Pyramid	Area	Perimeter of base x Slant Height/3	$[A (m) + B (m) \times 2 \times \text{Slant height}]/3 = \text{Square metres}$
Pyramid	Volume	Area of base x Vertical Height/3	$[A (m) + B (m) \times H (m)]/3 = \text{Cubic metres}$

Gauge Conversions – Conversion Factors

mm	Gauge	Imperial	
		Decimal	Inch
0.40	26		
0.60	24		
0.80	22	0.032	1/32
1.00	20		
1.20	18	0.047	3/64
1.40	17	0.055	
1.60	16	0.063	1/16
1.80	15	0.071	
2.00	14	0.080	5/64
2.30	13	0.092	3/32
2.50	12	0.098	
2.80	11	0.110	
3.00	10	1.125	1/8
3.50	9	0.138	
4.00	8	0.160	5/32
5.00	6	0.197	3/16
6.00	4	0.236	
6.30	3	0.250	1/4
8.00	2	0.315	5/16
9.00	1	0.354	
10.00	0	0.394	3/8
12.70		0.500	1/2
16.00		0.625	5/8
19.00		0.750	3/4
22.00		0.875	7/8
25.40		1.000	1



Conversion Tables

Mass Conversions kilos/pounds			
Kilogram kg	Pound lb	Pound lb	Kilogram kg
1	2.205	1	0.4536
2	4.409	2	0.9072
3	6.614	3	1.361
4	8.818	4	1.814
5	11.02	5	2.268
6	13.23	6	2.722
7	15.43	7	3.175
8	17.64	8	3.629
9	19.84	9	4.082
10	22.05	10	4.536
50	110.2	50	22.68
100	220.5	10	45.36

Mass Conversions tonnes/tons			
Tonnes	Tons	Tons	Tonnes
1	0.9842	1	1.016
2	1.968	2	2.032
3	2.953	3	3.048
4	3.937	4	4.064
5	4.921	5	5.080
6	5.905	6	6.096
7	6.889	7	7.112
8	7.874	8	8.128
9	8.858	9	9.144
10	9.842	10	10.16
50	49.21	50	50.80
100	98.42	10	101.60

Length Conversions cms/inches			
centimetres (cm)	inches (in)	inches (in)	centimetres (cm)
1	0.3937	1	2.54
2	0.7874	2	5.08
3	1.1810	3	7.62
4	1.5750	4	10.16
5	1.9690	5	12.70
6	2.3620	6	15.24
7	2.7559	7	17.78
8	3.1500	8	20.32
9	3.5430	9	22.86
10	3.9370	10	25.40
50	19.690	50	127.0
100	39.370	10	254.0

Length Conversions klms/miles			
Kilometre (km)	Miles	Miles	Kilometre (km)
1	0.6214	1	1.609
2	1.243	2	3.219
3	1.864	3	4.828
4	2.485	4	6.437
5	3.107	5	8.047
6	3.728	6	9.656
7	4.350	7	11.27
8	4.971	8	12.87
9	5.592	9	14.48
10	6.214	10	16.09
50	31.07	50	80.47
100	62.14	10	160.90

Pressure Conversion psi/MPa			
psi	MPa	MPa	psi
1	0.006895	0.1	14.5
50	0.3447	0.2	29.01
100	0.6895	0.3	43.51
200	1.379	0.4	58.02
300	2.068	0.5	72.52
400	2.758	0.6	87.02
500	3.447	1.0	145.0
600	4.137	1.5	217.6
700	4.826	2.0	290.1
800	5.516	2.5	362.6
900	6.205	3.0	435.1
1000	6.895	3.5	507.6
1100	7.584	4.0	580.2
1200	8.274	4.5	652.7
1300	8.963	5.0	725.2
1400	9.653	5.5	797.7

Pressure Conversion psi/MPa			
psi	MPa	MPa	psi
1500	10.34	6.0	870.2
1600	11.03	6.5	942.7
1700	11.72	7.0	1015
1800	12.41	8.0	1160
1900	13.10	9.0	1305
2000	13.79	10.0	1450
2100	14.48	11.0	1595
2200	15.17	12.0	1740
2300	15.86	13.0	1885
2400	16.55	14.0	2031
2500	17.24	15.0	2176
2600	17.93	16.0	2321
2700	18.62	17.0	2466
2800	19.31	18.0	2611
2900	19.99	19.0	2756
3000	20.68	20.0	2901



Useful conversion factors Imperial to Metric (Approximate)

“SI” denotes the INTERNATIONAL SYSTEM of Metric Units adopted in Australia

**This table may be used in two ways:
Multiply column “A” by column “B” to obtain column “C”
Alternatively
Divide column “C” by column “B” to obtain column “A”**

Remarks	A Multiply	B By	C To obtain
AREA: Symbol m² The SI unit of AREA is the SQUARE METRE.	Square inches	645.16	mm ²
	Square feet	0.929	m ²
	Square yards	0.836	m ²
	Acre	4047	m ²
	Hectare (ha)	10 000	m ²
DENSITY: Symbol kg/m³ The SI unit of DENSITY is the kilogram per cubic metre.	lb/in ³	27.68	t/m ³
	lb/ft ³	16.02	kg/m ³
	lb/yc ³	0.5933	kg/m ³
ENERGY: Symbol J The SI unit of ENERGY is the JOULE. 1 J = 1 N.m A joule is the energy expended or the work done when a force of one newton moves the point of application a distance of one metre in the direction of that force.	1.ELECTRICAL ENERGY		
	kilowatt hour (kW.h)	3.6	MJ
	2.HEAT ENERGY		
	British thermal unit (Btu)	1.055	kJ
	Btu/gal	0.2321	kJ/L ††
	Btu/ft ³	37.26	kJ/M ³
	3.MECHANICAL ENERGY		
	<u>foot poundal</u> ft.pdl	.04214	J
	<u>inch pound-force</u> in.lbf	0.1130	J
	<u>foot pound-force</u> ft.lbf	1.356	J
<u>foot ton force</u> ft.tonf	3.037	kJ	
<u>Metre kilogram force</u> m.kgf	9.807	J	
FORCE: Symbol N (NEWTON) The SI unit of FORCE (kg.m/s ²) has been given the special name – NEWTON. The newton is the force which when applied to a body having a mass of one kilogram, causes an acceleration of one metre per second in the direction of application of the force.	Poundal (pdl)	0.1383	N
	Pound-force (lbf)	4.448	N
	ton-force (tonf)	9.964	kN
	*kilogram-force (kgf)	9.807	N
	*also known as kilopond (kp)		
FORCE PER UNIT LENGTH: The SI unit is NEWTON PER METRE: Symbol N/m	pounds-force per inch (lbf/in)	175.1	N/m
	pounds-force per foot (lbf/ft)	14.59	N/m
	ton-force per foot (ton/ft)	32.69	kN/m

TEMPERATURE

The SI unit of TEMPERATURE is the KELVIN - Symbol K. For most practical purposes of temperature measurement and most calculations involving temperatures, degrees Celsius, symbol °C will be used.

DEGREES FAHRENHEIT TO CELSIUS
 $(^{\circ}\text{F} - 32) \times 5/9 = ^{\circ}\text{C}$

DEGREES CELSIUS TO FAHRENHEIT
 $(^{\circ}\text{C} \times 9/5) + 32 = ^{\circ}\text{F}$



Useful conversion factors Imperial to Metric (Approximate) - Continued

"SI" denotes the INTERNATIONAL SYSTEM of Metric Units adopted in Australia

This table may be used in two ways:
Multiply column "A" by column "B" to obtain column "C"
Alternatively
Divide column "C" by column "B" to obtain column "A"

Remarks	A Multiply	B By	C To obtain
LENGTH: Symbol m The SI unit of LENGTH is the METRE.	inches	25.4	millimetres (mm)
	feet	0.3048	metres (m)
	yards	0.9144	metres (m)
	chain	20.12	metres (m)
	mile	1609	metres (m)
	mile	1.609	kilometres (km)
MASS: Symbol kg The SI unit of MASS is the KILOGRAM.	ounce	28.35	grams (g)
	pound	0.4536	kilograms (kg)
	slug	14.59	kg
	ton (2240 lb)	1016.05	kg
	short ton (2000 lb)	907.2	kg
	ton (2240 lb)	1.016	tonne (t)
	pounds per foot (lb/ft)	1.488	kg/m
pounds per yard (lb/yd)	0.4961	kg/m	
POWER: Symbol W The SI unit of POWER is the WATT.	Btu per hour (Btu/hr)	0.2931	W
	horsepower (hp)	0.7457	kW
	ton of refrigeration	3.517	kW
PRESSURE: Symbol Pa The SI unit of PRESSURE or stress is the NEWTON PER SQUARE METRE which has been given the name PASCAL. $1 \text{ N/m}^2 = 1 \text{ Pa} = 0.000145 \text{ lbf/in}^2$ A pascal is the pressure or stress which arises when a force of one newton is applied uniformly over an area of one square metre.	lbf/in ²	6.895	kPa
	kip/in ² (1000 psi)	6.895	MPa
	lbf/ft ² 47.88 Pa	47.88	Pa
	kgf/cm ²	98.07	kPa
	bar	100	kPa
	Vertical column (head) of water.		
	(H ₂ O at 20°C)	9.79	kPa
	metres of water	2.984	kPa
	feet of water	0.1333	kPa
	torr (vacuum)	0.1333	kPa
	1mm Hg. (mercury) 1in. Hg.	3.386	kPa
	(mercury) atmosphere (atm)	101.325	kPa
	microns	0.133	Pa

TEMPERATURE

The SI unit of TEMPERATURE is the KELVIN - Symbol K. For most practical purposes of temperature measurement and most calculations involving temperatures, degrees Celsius, symbol °C will be used.

DEGREES FAHRENHEIT TO CELSIUS
 $(^{\circ}\text{F} - 32) \times 5/9 = ^{\circ}\text{C}$

DEGREES CELSIUS TO FAHRENHEIT
 $(^{\circ}\text{C} \times 9/5) + 32 = ^{\circ}\text{F}$



Relevant Australian Standards

AS 1074-1989	Steel tubes and tubulars for ordinary service
AS 1085.1-2002	Railway track material - Steel rails
AS 1085.17-2003	Railway track material - Steel sleepers
AS/NZS 1163:2009	Cold-formed structural steel hollow sections
AS/NZS 1365:1996	Tolerances for flat-rolled steel products
AS 1397-2001	Steel sheet and strip - Hot-dipped zinc-coated or aluminium/zinc-coated
AS 1442-2007	Carbon steels and carbon-manganese steels - Hot rolled bars and semi-finished products
AS 1443-2004	Carbon and carbon-manganese steel - Cold-finished bars
AS 1444-2007	Wrought alloy steels - Standard, hardenability (H) series and hardened and tempered to designated mechanical properties
AS 1445-1986	Hot-dipped zinc-coated or aluminium/zinc-coated steel sheet - 76 mm pitch corrugated
AS 1447-2007	Hot-rolled spring steels
AS 1448-2007	Carbon steel and carbon-manganese steels - Forgings (ruling section 300 mm maximum)
AS 1450-2007	Steel tubes for mechanical purposes
AS/NZS 1594:2002	Hot-rolled steel flat products
AS/NZS 1595:1998	Cold-rolled, unalloyed, steel sheet and strip
AS 2551-1982	Steel sheet and strip - Cold-rolled, electrolytic zinc-coated
AS 3597-2008	Structural and pressure vessel steel - Quenched and tempered plate
AS/NZS 3678:1996	Structural steel - Hot-rolled plates, floorplates and slabs
AS/NZS 3679.1:1996	Structural steel - Hot-rolled bars and sections
AS/NZS 3679.2:1996	Structural steel - Welded I sections
AS/NZS 4496:1997	Recommended practice for the colour coding of steel products
AS/NZS 4600:2005	Cold-formed steel structures
AS/NZS 4671:2001	Steel reinforcing materials

Handy Tips

To calculate the mass of steel circular hollow sections (CHS) (as used in Australian Standards AS/NZD 1163)

Circular sections

$$\text{Mass} = (\text{OD} - \text{wt}) \times \text{wt} \times 0.0246615.$$

where:

Mass = mass/metre	kg/m
OD = outside diameter	mm
wt = section thickness	mm

To calculate the mass of steel plate sections

Mass = $t \times 7.850 \times (L \times W)$ where:

$$\text{Mass} = \text{mass/metre}^2$$

t = thickness of plate kg/m

L = length of plate mm

W = width of plate m

To calculate the mass for Floor plate, add 2 kg/m² m

To calculate the mass of flats, squares and rounds.

Flats: Width (mm) x Thickness (mm) x 0.00785 = kg/m

Squares: Size (mm²) x 0.00785 = kg/m

Rounds: Diameter (mm²) x 0.006165 = kg/m

To determine the length of conveyor belting

Measure in inches from the outside of the roll to the opposite side of the centre opening S. Count the number of layers or turns of belt N.

C is constant = 0.2618

$L = S \times N \times C = \text{Length in feet}/3.28 = \text{metres}$

eg. 26" x 61 x 0.2618 = 415.22' divide by 3.28 = 126.6m

Property of Steel	Symbol	Value
Young's Modulus of Elasticity	E	200 x 10 ³ MPa
Shear Modulus of Elasticity	G	80 x 10 ³ MPa
Density	p	7850 kg/m ³
Poisson's Ratio	v	0.25
Coefficient of Thermal Expansion	α _T	11.7 x 10 ⁻⁶ per °C

Important Details

My local Metaland outlet details

Ph: _____ Fax: _____ Email: _____

My local Metaland Account representatives

Sales

Ph: _____ Fax: _____ Email: _____

Ph: _____ Fax: _____ Email: _____

Credit

Ph: _____ Fax: _____ Email: _____

My Metaland Account Number

A/c N: _____

My Industry Memberships

A/c N: _____

Safety Reminder

SAFETY AT WORK

OneSteel believes that a strong focus on safety in all workplaces is essential.

“The most important reason for making your workplace safe, is not at work at all.”

The most treasured moments of our lives happen outside of work, which is why it is so important to go home safely. An incident at work affects more than just the injured person. OneSteel encourages you to take a moment before commencing any task to consider your safety and the safety of others.

SAFETY AT OUR SITES

OneSteel does not compromise on safety, and we believe that all injuries, occupational illnesses and incidents are preventable. Achieving zero incidents is possible in all OneSteel businesses by maintaining a strong focus on the health and safety of all employees, contractors and customers. OneSteel's "Goal Zero" target aims to ensure employees can go home in the same condition that they came to work. OneSteel has implemented stringent safety policies and procedures that enable us to strive for our safety goal.

We appreciate your compliance with our safety policies when you visit our sites.

